



THE Compass

A newsletter for alumni and friends of Dunwoody College of Technology

WINTER 2007-2008

EVENING OF RECOGNITION

Thank you for the difference you've made!

“Tonight is a night to celebrate the legacy and the future of Dunwoody College of Technology,” stated President Ben Wright as he welcomed the crowd at Dunwoody’s Evening of Recognition event on September 20. “What makes Dunwoody College of Technology special is that it creates opportunities for people. You are the ones that help us to make that happen. You all make a difference in the lives of our students.”

Dunwoody’s Evening of Recognition is held annually as a way to thank donors of the college, to honor alumni, and to serve as a reminder that giving back truly helps create a best-in-class learning environment for students. Alumni and friends were met by students, wearing yellow Dunwoody t-shirts, who gave attendees tours of the building and a glimpse of some of the additions that have been added over the past year.



Gary Petersen (center), vice chair of Dunwoody’s Board of Trustees and chair of Dunwoody’s Good to Great Campaign, enjoyed his time with students at the Evening of Recognition. Petersen, president of Endres Processing, opened the event by thanking all of the volunteers and contributors who continue to move Dunwoody from good to great.



Thank You for the Difference You Make!

It was an evening of thanks as alumni and friends of the college mingled with each other and Dunwoody students during the annual Evening of Recognition event. Dunwoody's McNamara Center was transformed to provide a nice gathering space where guests were able to talk about why they choose to make a difference at Dunwoody. It was a time to reflect about the great things that have happened and will continue to come at Dunwoody.



Alumni of the college gave well-wishes and advice to the new class of Dunwoody students, a kind of passing-of-the-torch to end the evening.

2007 ALUMNI ENTREPRENEUR AWARD **Jay W. Johnson, 1978** **Electronic Systems**

When NEI College of Technology and Dunwoody College of Technology merged in 2003, Dunwoody was fortunate to “inherit” alumnus Jay W. Johnson, an NEI graduate and successful entrepreneur. Johnson grew up in Minneapolis where his father owned three automotive service stations. This was Johnson’s first introduction to Dunwoody as his father often hired Dunwoody graduates.

Johnson was an entrepreneur from the get-go of graduating from NEI. In 1997 he started Secure IT with a colleague, a leading provider of security services to the IT industry. The two later sold the company in 1998 for \$50 million to VeriSign. Since then, Johnson has been involved in other start-up companies and currently serves as an

active angel investor, board member, and business developer at NTOobjectives.com and CERTStation.com.

Johnson is committed to helping others succeed through education and active participation in the community. As an alumnus from Minneapolis Edison High School, he has established the Jay Johnson Family Scholarship Fund at Dunwoody which provides financial assistance to Edison High School students studying Electronics, Information Technology or Computer Networking Systems at Dunwoody.

Because of his successful career, entrepreneurial strides and philanthropic efforts, Dunwoody presented Johnson with its 2007 Alumni Entrepreneur Award during the Evening of Recognition event.



“
**Dunwoody gives you the tools
to solve problems. Dunwoody
graduates are able to take
those tools into the world and
make something special
of themselves.**

Jay W. Johnson



Introducing the New Dunwoody Recognition Hall and The Hub



Guests at the Evening of Recognition saw the new Dunwoody Recognition Hall and The Hub.



2007 ALUMNI ACHIEVEMENT AWARD Harlan Hallquist, 1968 Architectural Drafting & Estimating

Harlan Hallquist has always kept his ties with Dunwoody. Upon graduating in 1968, Hallquist maintained his relationship with Dunwoody by keeping active with the Alumni Association while building a successful career. In 2004, Hallquist was elected president of the Alumni Association's Board of Managers, a position he held until 2006. During his tenure as president, the Alumni Board of Managers started the Dunwoody Alumni and Friends Golf Tournament and scholarship, the 40-Year Club Reunion and scholarship, the Graduates of the Last Decade (GOLD) event, quarterly Alumni Association Graduation parties, and the Academic Achievement Award for graduating students.

Hallquist is vice president of marketing and business development for the North Central office of JE Dunn Construction in Minneapolis. JE Dunn is one of the largest construction firms in the nation with 17 offices across the country. In addition to his Dunwoody degree, Hallquist has an executive M.B.A. from the University of St. Thomas and a B.S. in Business Administration from the University of Minnesota.

Hallquist has been in the construction industry for over 30 years. Dunwoody is grateful for all he has given to the college and, thus, presented him with the 2007 Alumni Achievement Award during the Evening of Recognition. As he thanked the Dunwoody staff, alumni, and attendees, Hallquist spoke of the lessons he learned at Dunwoody and how they have shaped his life.



Dunwoody has given me values — the value of collaboration and confidence, the value of help and support, and the value of giving back.

Harlan Hallquist





THE AUTOMOTIVE DEPARTMENT: The Dunwoody Difference

Dunwoody is fortunate to have alumni, friends, and industry partners who contribute to the college's annual fund and capital campaign in an effort to move its programs from *good to great*. Because of such contributions, programs like the Automotive Collision and Automotive Service programs continue to flourish. It is the time and effort from alumni and friends that contribute to the difference—the Dunwoody difference—that drives students to succeed in their programs and chosen career paths after college.

AUTOMOTIVE COLLISION PROGRAM

The Automotive Collision program at Dunwoody utilizes Inter-Industry Conference on Auto Collision Repair (I-CAR) training materials. Instructors in the program are both ASE certified and I-CAR Gold professionals. Utilizing specialized tools and materials, students are taught the techniques used in straightening or replacing damaged body panels and structural components of cars. Students enrolled in the Automotive Collision program are also provided with:

- On-the-job training through the Automotive Collision Apprenticeship program
- Instructions on safety measures and procedures when dealing with paint and other hazardous materials
- Skills in mechanical and electrical repairs
- Access to the surrounding collision industry and partners of Dunwoody College of Technology



AUTOMOTIVE SERVICE PROGRAM

Students in Dunwoody's Automotive Service program receive excellent training and hands-on learning experiences. As a National Automotive Technicians Education Foundation (NATEF) certified program, the Automotive Service program provides students with the skills they need to continue on in the field upon graduating from Dunwoody. All of the instructors in this program are Automotive Service Excellence (ASE) certified, earning the classification of Master Technicians by the National Institute for Automotive Service Excellence. Students within the Automotive Service program are also given the opportunity to choose a specialty. Two tracks of learning, Toyota T-TEN and Honda PACT, are offered to students in this program.





Automotive Good to Great Campaign Appreciation Lunch

Many of the companies that gave to Dunwoody's Good to Great Campaign's Automotive phase attended a luncheon event in appreciation for their Dunwoody support at the college. Dunwoody's renovations have played a key part in the increasing enrollment numbers for the Automotive Service and Automotive Collision programs with enrollment increasing to over 240 students. Morrie Wagener, CEO of Morrie's Automotive Group and Dunwoody Automotive Campaign chairman, hosted the luncheon event and commented that, *"Leaders in our industry have been significant supporters of Dunwoody and its Automotive program including Henry E. Warren, owner of Warren Cadillac, who donated the land and building that Dunwoody's Automotive program is in today. And we can't forget Rudy Luther who gave a significant estate gift to Dunwoody, as well as GMADA and all the metro auto dealers who generously contributed to this project."*



Morrie Wagener, CEO of Morrie's Automotive Group, member of the Dunwoody Board of Trustees, and 1957 Automotive alumnus.

Chrysler College Automotive Program

Dunwoody's Chrysler College Automotive Program (CAP) leads to an Associate's degree in Applied Science. As a long-time partner of the college, Chrysler provides many donations as part of CAP. In the past year, Chrysler has donated over \$250,000 in the form of cars, tools, equipment and supplies. In addition Dunwoody's CAP was awarded a \$12,000.00 grant from the Chrysler Grant Fund. Dunwoody was recently awarded with Chrysler's "Outstanding Achievement Award for Innovative Ideas" due to the success of this program.

Toyota Technical Education Network

Students in the Automotive Service program have the option of participating in the Toyota Technical Education Network, receiving both an Automotive Service Technology degree or diploma and a Toyota T-TEN Certificate. Dunwoody's T-TEN program was recently named as one of the top T-TEN programs in the nation.

Honda Professional Automotive Career Training

Dunwoody Automotive Service students also have the opportunity to participate in the Honda Professional Automotive Career Training program. Upon receiving their Dunwoody diploma or degree in Automotive Service, students will be awarded a certificate from American Honda after participating in training and testing that is specific to Honda cars. Students will be on their way to becoming a Honda-certified technician.

THANKS TO THE GOOD TO GREAT CAMPAIGN DONORS FROM THE AUTOMOTIVE INDUSTRY

ABRA Auto Body	Master Collision Group
Alliance of Automotive Service Providers	Metro Management, Inc.
Borton Volvo	Morrie's Automotive Group
Denny Hecker's Automotive Group	PBE Specialists, LLC
Dodge of Burnsville	Polar Chevrolet Mazda
Feldman Imports	PPG Industries
Friendly Chevrolet	Saturn of St. Paul
Greater Metro Auto Dealers Association	Sears Imported Autos
LaMettry's Collision	US Bancorp - St. Paul Office
Larson, Allen, Weishair & Co.	Village Automotive Group
Luther Automotive Group and Dan Luther	Walser Automotive Group



DUNWOODY'S ALUMNI & FRIENDS GOLF TOURNAMENT

Raising the "Par" on Scholarships

In only its fourth year, the Dunwoody Alumni & Friends Golf Tournament saw record numbers in golfers and sponsorships at the September 14 event. Through generous contributions, Dunwoody was able to raise funds to award over 20 student scholarships.



Target was the Grand Sponsor at this year's tournament. "Target is proud to support Dunwoody College of Technology through this year's Alumni & Friends Golf Tournament. We know our contribution directly affects the lives of deserving students. We've seen first-hand how Dunwoody graduates benefit the community by becoming bright, hardworking, career-focused citizens," commented Marc Steadman, vice president of construction for Target. Steadman is pictured above with Christine Pierce, one of the 2007 Dunwoody Alumni & Friends Golf Tournament Scholarship recipients.



Thank you to the Dunwoody Alumni & Friends Golf Tournament Committee. This year's committee included (l-r) Todd Legut, 1986 HVAC; Harlan Hallquist, 1968 Architectural Drafting & Estimating; Chris Swingley, 1981 Architectural Drafting & Estimating and committee chair; and J.J. Carbonneau, 1979 Electronic Systems Technology. *Missing from the picture: Scott King, 2001 Architectural Drafting & Estimating.*



The winning foursome at this year's golf tournament was from Parsons Electric. Winners were (l to r): Jim Herlofsky (friend of Dunwoody), Chad Heid (1995 Electrical Construction), Jim Lawler (1989 Electrical Construction), and Dave Todd (1995 Electrical Construction).



Save the Date for 2008!

The 2008 Dunwoody Alumni & Friends Golf Tournament will be held on Tuesday, September 16 at the prestigious Legends Golf Club in Prior Lake, MN. Get your registration in before the early bird deadline of May 1, 2008 to receive a free golf polo. Cost is \$125 per golfer. Call Sarah Brown at: (612) 381-3056 for more information and to reserve your spot today!

Student Scope

Recipients of the Dunwoody Alumni & Friends Golf Tournament Scholarship

Raising scholarship dollars is a key component of Dunwoody's golf tournament. With the help of these scholarship dollars, students are able to concentrate on their best-in-class education. During this year's event, four students were awarded a \$1,000 Dunwoody Alumni & Friends Golf Tournament Scholarship. Because of the success of this year's tournament, additional scholarships will be awarded throughout the year. Scholarship awardees included (l-r): Christine Pierce, Interior Design; Christopher Graham, Architectural Drafting & Estimating; Rhiannon Pankake, Interior Design; and Irina Herrmann, Food Technology.



“Attending Dunwoody for one year made me fall in love with this school and made me more driven and motivated to succeed in life. The education I receive at Dunwoody will help me to secure my future, to be a trained and intelligent member of society, and to be an example for others.”

Irina Herrmann, Food Technology student

“Dunwoody has excellent instructors and job placement. My education through Dunwoody is teaching me the technical skills I need, and giving me an understanding of the industry.”

Christine Pierce, Interior Design student

TARGET, SWANSON & YOUNGDALE, AND UPS LEADING THE PACK:

Thank You 2007 Dunwoody Alumni & Friends Golf Tournament Sponsors

Dunwoody extends its thanks and appreciation to the companies who donated financially to the success of this year's golf tournament.

GRAND SPONSOR

Target

TOURNAMENT SPONSORS

Swanson & Youngdale
UPS

SPONSORS

Adjustable Joist Company
Ceco Concrete Construction
Cemstone
Counselor Realty
Dyste Williams
Egan Companies
Escape Fire Protection
Hanson Structural Precast Midwest Inc.
Harris Mechanical
Harrison Communications
ICI Paints
Jessen Press
Knutson Construction Services
LeJeune Steel
M.A. Mortenson
McGough Construction
Metropolitan Mechanical Contractors
Minneapolis Oxygen Co.
MTEC Electric Inc.
Olympic Wall System
Parsons Electric
Sexton Printing
Veit Companies
Zintl

YOU ARE POWERFUL: Kate Dunwoody Luncheon

The Kate Dunwoody Luncheon is held annually to recognize women at Dunwoody and give voice to their personal power and significance. The luncheon is also a time to honor Kate Dunwoody, who, along with her husband William Hood Dunwoody, provided leadership and influence in the Minneapolis community, including the establishment of Dunwoody Industrial Institute.

The keynote speaker at this year's Kate Dunwoody Luncheon was the inspiring Jearlyn Steele. Known in the Twin Cities community as a member of The Steeles, Jearlyn Steele is also a well-known speaker, radio talk show host, and TV entertainment reporter. She has recorded national and local commercials for Wilson Leather, Marshall Fields, Slumberland, Aveda and Target, among others. Her voice can be heard on various CDs for national artists like George Clinton, Mavis Staples and Prince. She has frequently appeared on "A Prairie Home Companion" radio show and can be seen in the films "A Prairie Home Companion" and "95 Miles to Go." She has received such awards as: Newsmaker of the Year by Minnesota Women's Press, The William (Billy) Griffin Award by the Hallie Q. Brown Center, 2002 Beautiful Strong Woman, and the 2006 CBS Radio General Managers Achievement Award.



Jearlyn Steele's radio talk show, *Steele Talkin'*, can be heard every Sunday night at 7:00 p.m. on WCCO Radio 830AM. Steele is a mother of two and resides in Minneapolis.



The Kate Dunwoody Luncheon is a time to celebrate women leaders, instructors, staff, students and supporters of Dunwoody. Pictured (l-r) back row: Maria Rapoport, Interior Design student; Jennifer Larson, member of the Alumni Board of Managers and Architectural Drafting & Estimating alumna; Amanda Pomerleau, Architectural Drafting & Estimating student. Front row (l-r): Shelley Grevillius, Gateway director; Alana Sunness-Griffith, vice president of marketing, Empire House; Kristina Simms, Architectural Drafting & Estimating student.

Kate Dunwoody

Kate Dunwoody shared in her husband William Hood Dunwoody's business interests and his concern for young people. She was a remarkable woman, respected for her service and philanthropy in Minneapolis, with a particular interest in the needs of women and children. Mrs. Dunwoody was influential in helping her husband establish Dunwoody Industrial Institute. In fact, it was she who threw the first switch to start the machinery in the old Central High School building, where the Institution was first located, in 1914.

Upon her death, a year after Dunwoody opened its doors, Mrs. Dunwoody bequeathed \$1.5 million (in addition to the \$3 million given by her husband) to Dunwoody Industrial Institute. She was a pioneer for women. As a young woman in the 1870's, she was not allowed to vote or own property, but she still made efforts to pave the way for women of the future





Dolores Fridge, a member of Dunwoody's Board of Trustees, emceed the luncheon event. Currently the chief resolution officer at Medtronic, Inc., Fridge has been a member of the Board since 2006.

Keynote speaker **Jearlyn Steele** (left) with scholarship awardees listed below in picture order.



Scholarships for Women

Seven female Dunwoody students were presented with scholarships at the luncheon on October 4. Five of these students were awarded the Kate Dunwoody Scholarship for demonstrating a spirit of volunteerism and community service, following in the footsteps of Kate Dunwoody. Other scholarships awarded included the Bob and Mary Peck Scholarship (in memory of Donna Cooksey) and the Pam Spence Scholarship. Female students who received scholarships included:

Irina Herrmann, Food Science, volunteers at People Serving People as a meal server. According to her instructor, she is an outstanding student and eager to learn new technology

Sarah Saumer, Food Technology, volunteers by raising money for food to send to Africa. Her instructor says she is an effective leader, dedicated to her studies, and respected by her peers.

Rhiannon Pankake, Interior Design, volunteers for Dunwoody's Open House and other events. She is on the Dean's List and a member of Phi Theta Kappa Honor Society as well as a mother of two young children.

Janece Chambers, Automotive, enrolled in the Post Secondary Enrollment Option at Rockford High School and completed her last year of high school at Dunwoody where she made the honor roll. When asked why she wants to become a mechanic, she said that she's grown up around cars, her grandpa built General Motors cars, and her brother also goes to Dunwoody.

Lee Maowee, Web Programming alumnus and current B.S. in Applied Management student, has tutored children to learn, write and speak English as a second language in the Hmong refugee community. She is a member of Phi Theta Kappa.

Janet Corio, Heating Ventilations and Air Conditioning, works as a tutor in her program. According to her instructor, she is an outstanding student with natural leadership abilities.

Tyshanna McKamie, Architectural Drafting & Estimating, volunteers as a Special Olympics coach and works full-time at a group home for disabled adults. She is on the Dean's list and a member of Phi Theta Kappa Honor Society.

Calendar of Events

Be sure to save the date for these exciting upcoming events!

JANUARY

- 12 Florida Alumni Gathering
Naples, FL
- 15 Tuesday Tour
- 23 Alumni Board of Managers
Quarterly Meeting

FEBRUARY

- 8 Arizona Alumni Reunion
Sun City, AZ
- 9 Arizona Alumni Reunion
Mesa, AZ
- 19 Tuesday Tour

MARCH

- 18 Tuesday Tour

APRIL

- 15 Tuesday Tour
- 23 Alumni Board of Managers
Quarterly Meeting

MAY

- 1 Automotive Alumni Reunion
- 14 50-Year Club Alumni
Luncheon
- 20 Tuesday Tour

JUNE

- 3 Tuesday Tour

JULY

- 23 Annual Meeting of Dunwoody
Alumni Association
- Alumni Board of Managers
Annual Meeting

SEPTEMBER

- 16 Dunwoody Alumni & Friends
Golf Tournament
- Legends Golf Club
Prior Lake, MN

TUESDAY TOURS AT DUNWOODY

Come back to see what is happening today at Dunwoody. Tours start at 10:00 a.m. and last through noon. To make a reservation, call Becky Seemann at: (612) 381-3057.

Coming Together through Alumni



NEI Alumni Reunion, August 2007 ^

NEI Alumni and friends gather annually at Dunwoody College of Technology to reminisce about their times at NEI and hear about new changes in the programs since the two colleges merged in 2003. NEI alumni were excited to welcome back Harry "the Axe", former instructor at NEI. Attendees at this year's NEI Alumni Reunion included: Charlie Anderson (1978), Paul Andrejzchick (1987), Tom Elliott (1988), Charles Foster (2005), Chad Hartje (1997), Sheila Hruby (2004), Todd Kacalek (1988), Jean Long (1981), James Mills (1997), Gretchen Paulson (2003), Josh Paulson (2003), Todd Peteron (1988), Keith Price (1995), Gloria Satt (2003), Dan Sheridan (1997), Norm Stewart (1990), Dan Swengel (1995), Ben West (1997), and Mickey Young (1992). Former NEI staff and instructors, some of whom are alumni, include: Jody Bystrom, Jean Captin, Michael Johnson (1973), Tim Mendal, Mark Muelken (1976), Meg Anne Sims, Harry Wilcox (1965), and Mary Wood.

Reminisce

Grand Rapids Alumni Event, August 2007 >

Dunwoody alumni enjoy the Grand Rapids Alumni Gathering that is held for alumni living or vacationing in the area. This year's event attendees include: John and Betty Adamich (1954 Automotive Service), Bradley and Shelly Belich (1988 Machine Tool), Dennis Brown (1963 Civil Technology & Land Surveying), Steve and Lynette Bryant (1968 Electrical Construction), Earl Coil and Wesley Carlson (1956 Electrical), George and Beverly Damjanovich (1953 Carpentry), Stan and Millie Grunenwald (1960 Architectural Drafting & Estimating), Ken and Hazel Hanson (1949 Electrical Construction), Bob Holmbeck (1967 Electrical Construction), Russell and Judy Hukriede (1954 Electrical Construction), Wayne and Kathy Kamphaus (1956 Architectural Drafting & Estimating), Steven Kovacovich and Larry Carlson (1969 Automotive Service), Will and Mary Laraway (1951 Architectural Drafting & Estimating), Allen and Georgianne Larson (1960 Automotive General), Bruce and Ingrid Lestico (1970 Auto Electrical), Lawrence Minerich (1967 Architectural Drafting & Estimating), Dick Nick (1965 Electrical Construction), Olaf and Carlene Norberg (1957 Electrical Construction), Joe and Hazel Nosie (1953 Architectural Drafting & Estimating), James Rebel (1968 Air Conditioning), Gary Schulz (1965 Electronic Systems), Dennis and Kathy Simonson (1961 Electrical Construction), and Bob Volkert (1957 Electronic Systems).

Reacquaint

Events

Dunwoody College of Technology hosts events for alumni throughout the year as a way to reminisce, reacquaint and reconnect.



Rochester Alumni Gathering, September 2007

Dunwoody alumni attended the Rochester Alumni Gathering at the Willow Creek Country Club. Guests included Glen Briske (1973 Refrigeration), Robert and Joan Erickson (1965 Machine Tool), Tom Fournier (1964 Engineering Drafting & Design), John and Jean Kelly (1948 Electrical Construction), Ron Kreinbring (1967 Architectural Drafting & Estimating), Gerald and Joan Krzmarzick (1956 Radio and TV Repair), Harold and Bonnita Luhmann (1973 Electrical Construction), David and Shirley Meyers (1967 Electronic Systems), LaVern Olson (1956 Architectural Drafting & Estimating), Gordon and Joan Olson (1955 Electrical Construction), Mike Prenzlou (196 Automotive Service), Harry and Jeanne Samways (1941 Electrical), Jerry and Helen Shore (1965 Machine Tool), Richard and Margaret Spaniol (1947 Electrical Construction), Gary Threinen (1964 Machine Tool), Cliff and Delores Voxland (1950 Carpentry), Joseph Weis (1952 Architectural Drafting & Estimating), Myron and Virginia Wentzel (1955 Radio and TV Repair), and Ross Capelle (2006 Electrical Construction & Maintenance).

Reconnect



Do you have a story to tell? Have you recently been married? Had a baby? Retired? Received a promotion? Moved? Send any and all alumni news updates and/or pictures with captions to: kchristopherson@dunwoody.edu or Dunwoody Alumni Department, Attn: Kat Christopherson, 818 Dunwoody Blvd., Minneapolis, MN 55403. (612) 381-3064

1954



Russ Hukriede (left), Electrical Construction, came from Grand Rapids, Minnesota to see his name on the Alumni & Friends Walkway, a gift from his daughter, Diane Wattenhofer. Upon graduating from Dunwoody, Hukriede worked for IBM until his retirement in 1989. He currently lives in Grand Rapids with his wife, Judy. The couple has two daughters, Debbie and Diane, and two grandchildren, Ben and Britny. Hukriede's hobbies include hunting, fishing, working at his cabin, bowling, horseshoes, cribbage, and volunteering his time at church.

1984



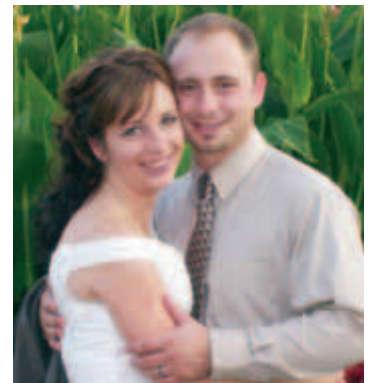
Steve Mowery, Computers, was unable to attend the NEI Alumni Reunion, but sent his regards to his classmates in '83 and '84. He apologizes for the red face in the picture, but says it has been about 122 degrees and windy where he is. Mowery was on assignment in Iraq at the time of this newsletter publication. He is pictured above in a helicopter. Mowery is the Southwest Asia and Africa manager for General Dynamics' Information Technology Intelligence Solutions Division.

1979

Lynn Brekke, Architectural Drafting & Estimating, was elected president of the Council of American Structural Engineers of Minnesota in July. Brekke is also president and structural engineer for La Pas Design, LTD.

2002

Classmates **Amanda Johnston** and **Corey Bass** (both from the Architectural Drafting & Estimating program) were wed on August 25, 2007. The couple ran off to Chicago, IL, where they had a small ceremony performed at the end of Navy Pier.



Greg Buck, president of Productivity, Inc., was awarded the Everett A. Hansen Award at this year's Technical Advisory Appreciation Dinner. This award is presented to an individual who has given of his or her time in an effort to enhance the Dunwoody experience for students, and who represents the hard work and talents of all of the industry leaders. Buck was instrumental in establishing Dunwoody's HAAS Technical Education Center, the first of its kind in the state.

Do you know a prospective Dunwoody student?

A son or daughter? A grandchild or relative? How about a friend or neighbor? If so, have them contact the admissions department at: (612) 374-5800. An admissions counselor will be able to give them the information they need on how they can achieve their goals through Dunwoody! For a complete list of programs, see page 16.



A Family of Dunwoody Graduates

John Stachnik (2007 Automotive), a recent graduate of Dunwoody, is pictured (left to right) with his uncle Dean Miller (1984 Automotive) and his two great uncles Mark Esch (1966 Highway RR&MC) and Odell Bratland (1949 Automotive). Stachnik is employed by Fire Stone, Minneapolis. Miller was employed by the F.B.I. from 1984 to 1996, after which he formed his own company, Auto Check. Esch, a retiree after 26 years with the Army National Guard, was employed by the Hennepin Co. Highway Department after graduating from Dunwoody. He received his B.S. in 1972 and his MBA in 1987. He is currently employed at SuperValu, Inc. in Shakopee. Bratland, now living in Florida during his retirement, was employed by Dunwoody about ten years prior to his employment with Arabian American Oil Company (ARAMCO).

Do You Have a History of Dunwoody Graduates in Your Family?

Do you have generations of Dunwoody graduates in your family? A father, grandfather, uncle, brother, or sister? How about a son, daughter, or grandchild? If so, let us know since planning is underway for Dunwoody's first multi-generation alumni gathering. Call Becky Seemann at: (612) 381-3057 or email bseemann@dunwoody.edu with your contact information.

Leave a Legacy to Future Generations of Dunwoody Students

Include Dunwoody in your Will

If you desire to remember Dunwoody in your will, you and your attorney will need to know the legal name and address:

Dunwoody College of Technology
818 Dunwoody Boulevard
Minneapolis, MN 55403

The following sample provisions may also be useful to you and your attorney:

Special Bequest

I give, devise and bequeath _____ (insert sum, percentage of estate, or description of property) to Dunwoody College of Technology, a Minnesota nonprofit corporation.

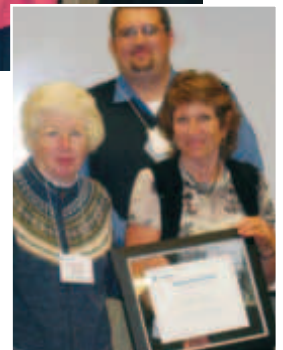
Residual Bequest

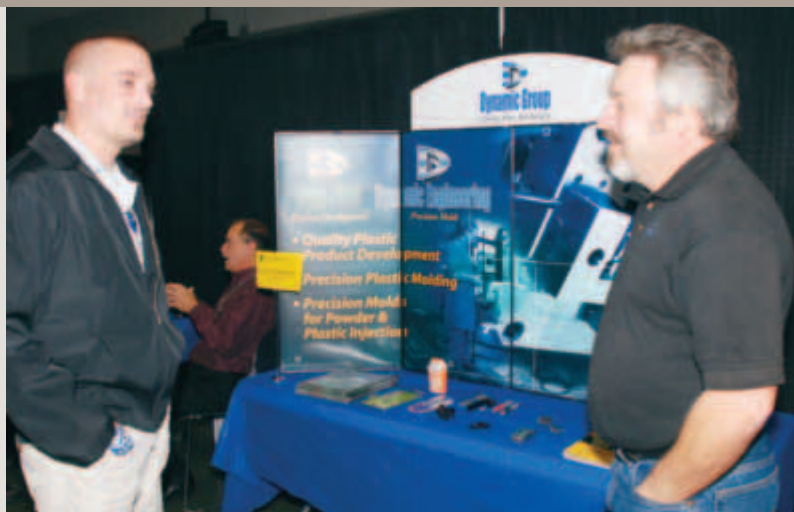
I give, devise and bequest all of my property which I may own at the time of my death, real, personal and mixed of any nature, which shall remain after payment and distribution of the items described above, to Dunwoody College of Technology, a Minnesota nonprofit corporation.

For questions, contact Becky Seemann at: (612) 381-3057 or bseemann@dunwoody.edu.



Norwood and Muriel Nelson (above) along with Evelyn Henry (right) were inducted into the Dunwoody Legacy Association at the annual luncheon held in October. Dunwoody is grateful for their future commitment to help Dunwoody students.





Alumni and Business Owners Career Fair

Dunwoody's Career Services Center hosted an Alumni and Business Owners Career Fair for current Dunwoody students in October. Students visited different company booths to apply for jobs and get a feel for what they could possibly achieve someday. Fifteen companies participated, 13 of which were owned or operated by Dunwoody alumni. The participating companies included: Automated Extrusion Tooling & Design; Countryside Heating & Cooling Services, Inc.; CRTechnical Staffing; Egan Companies; Hunt Electric Corporation; Identifix; Metal Craft Machine & Engineering; Minneapolis Oxygen Company; Morrie's Automotive Group; MTEC Electric Inc.; PMR Sales; Steel Structures; The Dynamic Group; Total Mechanical Services, Inc.; and Veit.

It's an Alumni Reunion for Dunwoody's Automotive programs

Thursday, May 1, 2008

Education Hour and Building Tours 5:00 p.m.

Social Hour 6:00 p.m.

Program 7:00 p.m.

> Come see what is new in your program

> Listen to an industry speaker

> Reminisce with fellow alumni

Watch for your invitation in March

For more information, contact Sarah Brown at: (612) 381-3056 or sbrown@dunwoody.edu

In Memoriam

Dunwoody extends its sympathies to the families and loved ones of the following alumni and friends who have recently passed away:

William John Abel

1958 Architectural
Drafting & Estimating
April 24, 2006

Alton L. Anderson, Jr.

1974 Refrigeration
Notified August 1, 2007

Alvin Backlund

1962 Electrical
Construction
Notified August 11, 2007

Kenneth Becksted

1956 Welding
October, 2005

Kevin Dosmann

1987 Architectural
Drafting & Estimating
Notified October 5, 2007

Dennis M. Factor

1969 Refrigeration
Notified October 10, 2007

Henry Fischer

Electrical
Notified October 10, 2007

Ambrose J.

Garavaglia
1940 Automotive Service
July 2, 2007

Robert A. Ogram

1984 Automotive Service
Notified October 2, 2007

William Pavlik

1949 Baking
Notified September 24,
2007

Philip W. Pentz

1954 Printing
June 2, 2007

James Repphun

1960 Architectural
Drafting & Estimating
Notified August 21, 2007

Gerald Winberg

1940 Refrigeration
Notified October 10, 2007

Luverne J. Worms

1950 Air Conditioning
Notified September 27,
2007

Keith Wiens

1994 Engineering, Drafting
& Design Technology
May 18, 2007



Dear Friends,

Throughout our 93-year history, Dunwoody College of Technology has enjoyed many accomplishments, and the past year was no exception. Since William Hood Dunwoody's founding of the school in 1914, the goal has been unwavering: to provide quality, applied learning experiences to students interested in technical occupations and careers regardless of their race, creed or economic status.

The 2006-2007 school year was an exciting one, bringing important progress to the college in multiple areas. Highlights included:

- A positive "quality check-up" from the Higher Learning Commission
- An employment placement rate for graduates of 98%
- Student retention that moved from 76% to 80% due to the opening of two new on-campus resources: the Elftmann Student Success Center and the Wenda W. & Cornell L. Moore Multi-Cultural Center
- New Graphic Design, Interior Design, and Food Technology programs
- The launch of Dunwoody's first four-year degree program, a B.S. in Applied Management
- The *Good to Great* Campaign, funding many of the college's new initiatives, reached the \$23 million mark

One of the college's major initiatives of the last few years has been to diversify its student body, to meet employers' demands for a more diverse workforce, and to better reflect the demographics of the Twin Cities community. During the 2006-2007 school year, students of color, for the first time, exceeded 20% of the student population. Most dramatic, Dunwoody established a new public vocational/technical charter high school in north Minneapolis. On August 6, 2007, this high school, named Dunwoody Academy, opened its doors to 200 freshmen and sophomores at a facility on Olson Memorial Highway, just a few blocks north of the college. The expectation is that in three years this high school, sponsored by the college, will send its first graduates on to Dunwoody College of Technology in one of four technical areas: Construction, Manufacturing, Automotive, or Health Care.

Dunwoody's contributors, business partners, alumni, volunteers, and friends are all helping move Dunwoody College of Technology from good to great. None of the accomplishments of the last year would have been possible without your support.

Thank you for making a difference in the lives of current and future generations of students.

Sincerely,

Dr. C. Ben Wright, President



REPORT CONTENTS

16 Dunwoody Programs

17 *Good to Great* Campaign Donors

20 Annual Fund Drive Donors

29 Dunwoody Legacy Association Members

30 Memorials and Honorary Gifts

31 Matching Gifts and Gifts In-Kind

32 Financial Reports

34 Dunwoody Leadership

35 Ways to Give

Dunwoody Programs

Bachelor of Science in Applied Management

Automotive Collision Repair and Refinishing

Automotive Collision Apprenticeship

Automotive Service Technology

Toyota T-TEN

Honda PACT (Professional Automotive Career Training)

Dunwoody Chrysler Automotive Program

Automotive Technician Apprenticeship Cooperative

Electrical Construction Design and Management

Electrical Construction and Maintenance

Electronics Technology

Heating and Cooling Systems

Heating/Air Conditioning Systems Design

Heating and Sheet Metal Option

Heating, Ventilation and Air Conditioning Systems Servicing

Major Appliance Service Professional

Architectural Drafting and Estimating Technology

Construction Project Supervision

Basic Construction Management

Facilities Service Management

Industrial Controls

Land Surveying

Interior Design

Graphics and Printing Technology

Graphic Design

Press and Finishing Technology

Prepress Technology

Computer Information Technology Professional

Computer Networking Systems

Food Science Technology

Automated Systems and Robotics

Engineering Drafting and Design Technology

Machine Tool Technology

Welding



VISION

To be recognized as the best-in-class leader and innovator in learner-centered workforce development.

MISSION

To provide leading-edge technological education and service to a diverse population of learners preparing for and practicing in business and industry.

DRIVING FORCE

Graduates Who Are Worth More

CORE VALUES

- We value practical, applied learning.
- We believe in instilling a strong work ethic.
- We are committed to providing our students with high-quality technical education that results in an immediate job and a fulfilling career.
- We are committed to continuous quality improvement.
- We value a diverse faculty, support staff, and student body and their unique contributions to an inclusive Dunwoody community.
- We value high performance within an environment of trust, respect, teamwork, and personal accountability.

2006-2007 Dunwoody Contributors

As a private, tax-exempt organization, Dunwoody College of Technology could not prosper without support and gifts from individuals, corporations, foundations, and other community organizations. This list of contributors honors those organizations and people who gave to Dunwoody from July 1, 2006 through June 30, 2007. Each of these contributors deserves our deepest thanks and appreciation. Businesses owned or operated by Dunwoody alumni are identified with an *. The names of alumni contributors are followed by their year of graduation or last enrollment. The names of current employees of Dunwoody College of Technology are followed by an ^S; the names of retired employees are followed by an ^R. If your name has been inadvertently omitted or misspelled, or if your company is alumni-owned or operated and has not been so indicated, please accept our sincere apologies. Please bring the oversight to our attention by calling the Development Office at (612) 381-3052.

GOOD TO GREAT CAMPAIGN

Gifts of \$500,000 and above

Clarence E. Anderson, '39, Estate
Robert W. Carlson, Jr. and family:
Robert and Virginia Carlson
Mrs. Robert W. Carlson, Sr.
Quadion Corporation
Quadion Foundation
Minnesota Rubber Company
Joel A. Elftmann, '60
Elftmann Family Fund, The
Minneapolis Foundation
General Mills Foundation
Eunice M. Munck Estate
Cecil G. Ness, '39, Estate
Vernon, '35, and Mae
Thompson Charitable Trust

Gifts of \$250,000 to \$499,999

Anonymous
3M Foundation
Fred E. Modlin, '42, Estate
Gordon L. Schuster, '39
The Chrysler Foundation
The Minneapolis Foundation
Sue and David Bennett
Family Fund
Dye Family Foundation
Charles M. Harrington Fund
Grace B. Wells Fund
Toyota Motor Sales U.S.A., Inc.

Gifts of \$100,000 to \$249,999

American Honda Motor Company
Clifford I. Anderson
Crown Holdings, Inc.
ARAMARK Corporation
Roger Bredesen
CenterPoint Energy
Chrysler LLC
Chrysler Training Center
Cornelius Company
DuPont Imaging Technologies
Esko Graphics

Graco Foundation
Edgar Grove, '49, Estate
Haas Automation, Inc.
Harper Corporation of America
Ron and Katherine Harper
Karl A. Kirschbaum, '33, Estate
Kodak Health Imaging
Kraus-Anderson Companies, Inc.
Jack R. Lake, '61
Longview Foundation
M. A. Mortenson Company
McKnight Foundation
National Science Foundation
Raymond K. Newkirk, '65
Donald W. Peterson, '47
Productivity, Inc.
Reynolds and Reynolds
Alta Van Tries Estate
Wedum Foundation
Leonard Westlund, '23, Trust

Gifts of \$50,000 to \$99,999

John J., '54 and Betty Adamich
Donald K. Bauer Estate
Steve Bryant, '68
David P. Crosby
George V. Doerr Estate
Charles S. Donatelle, '65
Michael J. Donatelle, '67
Donatelle, Inc. *
Egan Companies
Theodore A. Ferrara, '77
Standard Heating & Air
*Conditioning Company **
Robert P. Fox Estate
Greater Metropolitan Auto Dealers Association
Dennis E. Hecker
Mary K. Husby
Gary C. Janisch, '68
Johnson Controls, Inc.
Stanley A. Johnson, '38, Estate
Charles E. Kiester
Medtronic Foundation
Fred and Christine Meyer
Cornell L. and Wenda W. Moore
The Pentair Foundation
Gary N. and Barbara Petersen
Jay and Rose Phillips Family Foundation
Powermation
RBC Dain Rauscher Foundation

Ryan Companies USA, Inc.
Ryt Way Industries, Inc.
Southways Foundation
Emma Turnwall Estate
Marjorie Wood/Bissell

Gifts of \$25,000 to \$49,999

ABRA Auto Body
Jo Anne Anderson
Athwin Foundation
Banner Engineering Corporation
James Basara, '75
Russell Becker
Carolyn Foundation
Chrysler Donation Program
Eugene C. Coan, '46
Bruce W. Engelsma
Mark H. Falconer, '68
Minneapolis Oxygen
*Company **
Ford Motor Company
Training Center
James R. Fox
Michael Hanson, '85
Mark Jessen
Jessen Press
Keystone Automation
Kenneth Malmstrom, '33
Andrea Newman
North Anoka Control Systems
Helen E. Olsen Estate
Douglas L. Olson, '68
Premier Electrical
*Corporation **
Otto Bremer Foundation
Packaging Systems Automation
Martha Pinney Estate
Polar Chevrolet Mazda
Polaroid Graphics Imaging
Rahr Foundation
John M. Schlagel, '70
Donald E. Snyder, '57
The Instant Web Companies
Tol-O-Matic Inc.
Emma M. Turnwall
US Bancorp - St. Paul Office
Schonberg Foundation
Village Automotive Group
Maurice J. Wagener, '57
*Morie's Automotive Group **
Walser Automotive Group Inc.
Whirlpool Corporation

Dr. C. Ben Wright ^S
Zero Zone Refrigeration

Gifts of \$10,000 to \$24,999

Anonymous
Affordable Automotive
Alliance of Automotive Service Providers
American Spirit Graphics
Marian C. Andren
Appliance & TV Sales
Banta Digital
Alice H. Bauman Estate
Russell Becken, '33
Ronald R. Belschner
Borton Volvo
Boston Scientific
Brown & Sharpe
Eva K. Burgeson
Comelex Supply
Lewis R. Cradit, '54
Donald Dahltorp, '39, Estate
Howard C. DeWitt, '31, Estate
Dodge Dealer Advertising Association
Robert A. Doty ^S
Rodney E. Erickson, '66
Feldmann Imports, Inc.
Lester E. Goetzke, '57
Midtown Manufacturing
*Company **
Tom Grossman
Honeywell Commercial Training Center
Hypro
Burnett V. Iverson, '36, Estate
John M. Johnston, '50
Kodak Polychrome Graphics LLC
Larson Allen Weishair & Co. LLP
Leonard J. Ludescher, '40, Estate
William A. MacPherson, '76
Medina Electric, Inc.
Metropolitan Mechanical Contractors, Inc.
Bernard W. Morton, '54
Vergil J. Neitzel, '49
North Star Research Fund
Robert A. O'Brien, '54

Gifts of \$10,000 to \$24,999

continued

Par Systems
Printware
Rimage Corporation
Sears Imported Autos, Inc.
Mark Skipper^S
Talla Skogmo
Frank Starke^S
Paul Stork, '38
Craig Sulentic
Walser Toyota
Weber Shandwick Worldwide
White Castle Systems, Inc.
Yes Distributing, Inc.

Gifts of \$5,000 to \$9,999

AJB Sales
T. J. Arneson
Baker Investments
John H. Beal
Carrier Corporation
James Cavalier
Colle + McVoy Inc.
Color Trek, Inc.
Cool Air Mechanical *
Dodge of Burnsville *
Duncan Company
Eaton Corporation
Empirehouse, Inc.
Scott Erickson
Trevor Fleck
General Mills
Gerbig Engineering
Greenlee Textron
Daniel Grider, '62
Harlan E. Hallquist, '68
Peter A. Hansen, '65
Fulton Holtby
IMACA Education Foundation
Albert Lippert Estate
Lofton Label, Inc.
Master Collision Group
Mate Precision Tooling
NACS, Inc.
Corey Nordwall
Northwest Lasers, Inc.
PBE Specialists, LLC
George R. Peck, '75
Robert E. Poupore, '50^R
PPG Industries
Prime General
Contractors, LLC *
Donald E. Ryks
John W. Schletty, '57
Siemens Energy &
Automation, Inc.
John Slama
LaVerne P. Smith, '57
State Farm Insurance Company
Subaru of America, Inc.
Raynold, '47, & Millicent
Swanson Estate
Roger W. Swanson
Christopher E., '81, and
Jean Swingley
Loren L. Taylor

Technical Chemical Company
Tennant Company Foundation
Tetra Pak Carton Chilled Inc.
Turck, Inc.
Dr. Richard^S and
Valerie Wagner
Wynn's
Jeff M. Ylinen, '79^S
Srilata A. Zaheer
Richard T. Zera

Gifts of \$1,000 to \$4,999

Anonymous (2)
Henry P. Albrecht
Arthur Alexander^S
Donald L. Androsky, '80^S
Martin Arend^S
August Technology Corporation
Warren A. Baker, '63
Clayton Bartholow, '83^S
Alma Batcheller
Jane Batcheller
Emily Bollensen, '96
Marvin Bosshart, '53
Chuck A. Bowen, '66^S
Robert M. Brandon^S
Peter A. Budge, '61
J.J. Carbonneau, '79
Dana L. Casey, '67
John^S and Pamela Chandler
Barb S. Charboneau^S
Gregory M. Clark, '74
Amondo Dickerson^S
Vernon L. Discher, '48
DuPont and Company
Patricia Edman^S
Richard Engholm, '70^S
Ermak Foundry & Machining Inc.
John Esch
The Esco Institute
Friendly Chevrolet, Inc.
Heather Goodman^S
Bruce W. Graffunder^S
Jerome A. Grundtner, '73
Guyers Builder Supply, Inc.
Marcia B. Harter
Orville C. Haugen, '52, Estate
John D. Houdersheldt, '46
Stephen M. Ivancic
Allen C., '68^S and
Mary Anne^S Jaedike
William A. Jordan, '69^S
Judy B. Kao
Dennis R. Kenison, '69
Ronald D. Kreinbring, '67
LaMettry's Collision
Edward D. Lentsch
James P. Lillehei
Chell C. Luesse, '90^S
Shaun Manning^S
Benito P. Matias, '93^S
James M. McGowan
Jeff McLeod
Mary Pouch Meador^S
Arnold F. Meleen, '34
John G. Miller^S
Ramona Moore
Kristina L. Oberstar^S



Dunwoody dedicated the Alumni and Friends Walkway on August 18, 2007. Gib Syverson, 1974 Automotive alumnus, has led the effort with 100 bricks on the walkway outside the Carlson Commons entrance. The next installation is scheduled for April 2008. Place your order today. Visit www.dunwoody.edu/donate or contact John Chandler at: jchandler@dunwoody.edu or (612) 381-3061.

Omicron Boule
William C. Owens, '56, Estate
Tola Oyewole^S
Caroline Passe
Alvin Petersen, '47
Warren E. Phillips R
Reynold Welding Supply
Pete Rivard^S
David Rude^S
Saturn of St. Paul
David E. Schlueter, '78
Nancy M. Schwartz^S
Becky^S and Bob Seemann
Smyth Companies, Inc.
Laura Solarz^S
Albert Starshak
Dennis Stenquist^S
Chad Strunk^S
Gilbert E. Syverson, '74
James T. Teff, '64
James A. Tilbury, '74
Jim L. Trucker, '61
Michael R. White, '84^S
Marvin G. Zweig, '70

Gifts up to \$999

Anonymous (10)
317 Groveland LLC
Nneka Abdullah^S
Yusuf Abdullah^S
Acme Machine Company
Mark W. Anderson, '01
Mike A. Anderson^S
Richard A. Anderson^S
Richard Arboleda^S
Fay Awishus
Linwood L. Ayotte, '62
Robert J. Bach, '77
Scott Bader
Barbara P. Bailey
Hale Baker
John W. Barlass
Henry E. Beadell, '69^S
Gordon W. Beneke, '59^R
Tony Benthin^S
Robert Bentz, '94^S

Clayton A. Berglund
Richard Berko^S
Jeff Bixby^S
Nathan Blommel^S
Donna J. Bonello
Frank Bonello
Michael J. Boo
Dawn Bradley^S
Jay L. Brennecke^S
Mike D. Brewbaker, '00^S
Martha C. Brooks
Mary E. Brosveen
Ross Brower^S
Donald Brown
Ann Browning^S
Sarah Brown^S
Craig J. Bruneau
Michael G. Burnett
Jason Burns^S
Jon Buyck^S
Career Partners, Inc.
Debra Carl
Darlene G. Carlin
Phyllis C. Carter^S
Dee A. Caton
Jeff Chase^S
Brooks Christensen, '71
Yun-bok Christenson^S
David Christopherson, '60
Kathleen Christopherson^S
Robert P. Christoph, '69^S
Frank W. Claude, '74^S
Bradley Cleland, '99^S
Marilyn J. Clemens^S
Charles A. Cleveland
Geriant Cook^S
Theresa Corey^S
Charles Cox
Walter A. Cox, '76^R
Arline P. Cribb
Steve Cunningham, '94^S
Everette J. Daigle^S
H. David Dalquist
Carrie Davenport^S
Kelly R. Davis
Matt DeVries^S
Gregory A. Dietz, '05

Thank you

Thank you

Gifts up to \$999

continued

Amy S. and Sam DiPaola
 Donald G. Dreblow
 Donald J. Driessen, '59
 Tanya J. Duesterhoeft, '05^S
 Jerry Durbin^S
 David DuVal, '94^S
 Alice Duzan^S
 Raymond H. Edwardson, '48
 Randall Eggebraaten^S
 Ben Ellsworth, '59
 Michael C. Engebritson, '63^S
 Kent A. Esby, '67^S
 Brian T. Evensen
 Kerry M. Evensen
 Fafinski Mark & Johnson P.A.
 Gary F. Fay
 Jay W. Feider, '82
 Douglas A. Felton, '66
 Russell C. Felt
 James Ferrara Estate
 Todd J. Ferrara, '80
 Merlin W. Finger
 John A. Fischer, '74
 Jeffery Flanery
 Timothy Flugum^S
 Mark Frazier^S
 Lester P. Frederick^S
 Carol Freeman^S
 Polly Friendshuh^S
 Lee Frisvold, '91^S
 Eeris Fritz^S
 Robert Fritz
 Curtis M. Gabrielson, '03^S
 Kurt R. Gaum
 Mohannad Ghawanmeh^S
 Timothy Gnitka^S
 Teresa L. Goodman
 James J. Grady
 Jenele C. Grassle
 Jane Gregg
 Shelley Grevillius^S
 Jane M. Grimes^R
 Frances J. Gunberg
 Inez Gunberg
 Dorothy A. Gustafson
 Paul M. Gust^S
 Rebecca Haddad^S
 Pam S. Hagen^S
 Maureen G. Haggerty
 LeDora Hankton^S
 Michael J. Hansen^S
 August R. Hanson
 Rebecca Hanson^S
 Edith I. Haraldson^S
 Edward T. Hare
 Dana M. Harmon
 Melissa^S and Mat Harrison
 Jowharah Harris-Reid^S
 Ann M. Harty, '02
 Kristal Hawkins
 Jerry Heath^S
 Kim Helm^S
 Stephen M. Hlas
 Alecia Hodges, '04^S
 Thomas A. Hohag

Julie Holmen
 Jim Holzemer^S
 Elizabeth A. Horst
 John A. Houle
 Betty Howard^S
 Hyde Park at Pelican Bay
 Condominium Assn.
 Jean E. Iwen
 Mary Jane B. James
 Jody C. Japs-Jung
 Marleen D. Jaquis
 David Jarzyna^S
 Keith Jirak^S
 Sharon M. Jirak, '01^S
 Robbin S. Johnson
 Jerald A. Jones, '62
 Barbara Josephs^S
 Jeffrey J. Keljik, '74^S
 Debra Kerrigan^S
 Scott A. King, '01
 Tom H. Kleinman, '78^S
 John Klick^S
 Gary R. Kloncz, '60
 Daniel J. Koch
 Edward J. Kolinski, '34
 Ann Krogmeier-Goddard
 Jon J. Kukachka, '75^S
 Chad Kurdi^S
 Joseph LaCasse^S
 Steven P. Larcom^S
 Melanie Larsen Sinouthasy^S
 Philip A. Lee
 Steven G. Lee, '78^S
 Michael L. Lehr, '77
 Fred Lemke^S
 Brenda Lester^S
 Gary Levi^S
 Floyd E. Lindahl, '61
 Alice H. Liptak
 Mary Lundberg
 Rachel Lund^S
 Lonny Lunn^S
 Michael Maas^S
 Katie Malone^S
 Molly Malone^S
 David Mansheffer^S
 Marilyn L. Marion^S
 James Mathis^S
 Mary Lou Mathison
 Barry Mc Cool
 Mark T. McCary
 Lenora McCray^S
 Lewis E. McNeill
 Versie McNeill
 John McShannon^S
 Constance B. McWorkman
 Thomas Mehle^S
 Melin & Associates Realty LLC
 Dawn Mensing
 Andhi R. Michaux, '03
 James Micheletti^S
 Jonathon Moore^S
 Nicole G. Moore
 Lucille A. Morgan
 Joseph D. Muller, '00^S
 Molly Murawski^S
 Bridget R. Murphy, '00^S
 Anthony J. Nechanicky, '63^R

Robert Nell^S
 Brian D. Nelsen^S
 Timothy J. Nelson
 Emilie Nimmo^S
 Dora Noerenberg
 Charles L. Norton
 James Nyberg^S
 Terri Ocel^S
 James M. Offerman
 Dale M. Olson, '60
 Jean L. Olson
 Sylvester Onyeneh^S
 Marcia L. Page
 Sook Park^S
 Leo Parvis^S
 Carol Paulus^S
 Katie Peerenboom^S
 John R. Penaz, '74 & '77^S
 Paul O. Peterson^S
 Robert L. Peters, '65
 Richard E. Pettijoh, '47
 Bruce Polaczyk, '64^S
 William B. Pollard
 Marjorie Pursell Reese
 Charles Radlof^S
 E. A. Rasmussen
 Mary Rasmussen^S
 Jayne Reid-Walen
 Gary Reiman^S
 Stephan J. Reinarts^S
 Melinda Reiter-Schroepfer^S
 Michael Resnick^S
 Robert A. Ricke, '64^S
 Edmund Robertson^S
 Joseph Roemer^S
 Leslie Root^S
 Leah Roue, '00^S
 Paulette R. Rutlen, '81
 Arnold O. Saari
 Patricia B. Saunders
 Jo Ellen L. Saylor
 Karen Schmitt^S
 Steven M. Schoeben
 Bob Schofield
 Marge Serr^S
 Brian Seviola^S
 Barry Shear^S
 Wayne A. Simoneau, '57
 Charles R. Singer
 Robert Skarsten^S

John G. Skogmo
 Judith M. Skogmo
 Kevin R. Skow^S
 Fouzi Slisli^S
 Jacqueline H. Smith
 Beth Soberg^S
 Dean M. Soderbeck, '74^S
 Satiya C. Solomon, '01^S
 James Stake
 Susan Stanek
 Nancy Stenson
 Steven Scott Management, Inc.
 Robert E. Strawman
 Mary Stuart Snyder
 Brenda Sullivan^S
 Terry Sumrall^S
 Dr. Bruce Sundberg
 Charles G. Taft, '89^S
 Arcelle Taylor^S
 Jane Taylor
 Sabrina Thaldorf^S
 Andrew R. Thesing, '06
 Gil Thoele, '51
 Lisa M. Thomas^S
 Richard Thomson^S
 Chris Tomshine^S
 Tausley Ford, Inc.
 Donald Trippie^S
 David J. VanHout, '91
 Todd J. Veitenheimer
 Ashraf Wahba^S
 Diane Wattenhofer
 Joseph C. Weis, '52
 Frank Wells^S
 Gregg H. Westerhaus, '84
 Gervaise M. Westernman
 Morry Westphal, '57
 Robin L. Whitney^S
 Thomas W. Williams Estate
 Heidi Williams^S
 Kevin Wirkkala^S
 Jon A. Woestehoff
 Pepe Wonosikou^S
 Ronald Wurtzburger
 Murray P. Yeager, '05^S
 George Youngvorst^S
 Ray Yuzna, '71^S
 Lynn Zamansky
 Carla L. Zenk



Spring graduation 2007.

2006-2007 ANNUAL FUND DRIVE

July 1, 2006 – June 30, 2007

Master Builders

Gifts of \$10,000 and above

Anonymous (2)
3M Foundation
Allianz Life Insurance Co. of North America
Ameriprise Financial, Inc.
APi Group, Inc.
Associated General Contractors of Minnesota
Kenneth L. Bergstrom, '49
William F. Bieber
Bieber Family Foundation
CenterPoint Energy
Charlson Foundation
Crown Holdings, Inc.
Joel A., '60 and Maryann Elftmann
Elftmann Family Fund, The Minneapolis Foundation
William Entenmann, '50
General Mills Foundation
Graco Foundation
Jay W. Johnson, NEI, '78
Medtronic Foundation
Fred and Christine Meyer
The Minneapolis Foundation
Dye Family Foundation
Charles M. Harrington Fund
Grace B. Wells Fund
Minnesota Mechanical Contractors Association
National Electrical Contractors Association
The Roy E., '26, and Amelia Olson Charitable Lead Trust
Packaging Machinery Manufacturers Institute
Peregrine Capital Management, Inc.
R. B. Nordick Foundation
Shakopee Mdewakanton Sioux Community
Sheridan Foundation
Ernest J. Skramstad, '38
Marilyn Stork
TCF Foundation
The Chrysler Foundation
The Pentair Foundation
Thrivent Financial for Lutherans Foundation
WCA Foundation

Charles A. Prosser Club

Gifts of \$5,000 to \$9,999

ARAMARK Corporation
Russell Becker
Boston Scientific
C. Charles Jackson Foundation
Eugene C. Coan, '46
David P. Crosby
Deluxe Corporation Foundation

Donatelle, Inc. *
Charles S. Donatelle, '65.
Michael J. Donatelle, '67
Robert W. Fayfield
James R. Fox
Mary K. Husby
Johnson Controls, Inc.
Kopp Investment Advisors, Inc.
Kraus-Anderson Companies, Inc.
Lyman Lumber Company Foundation
Margaret Rivers Fund
Micro Control Company
Minneapolis City of Lakes Rotary Foundation
Otto Ohr, '41
Gary N. and Barbara Petersen
Arthur J. Popehn, '40
RBC Dain Rauscher Foundation
Red Devil Equipment Company
Wayne P. Rixmann, '64
Robins, Kaplan, Miller & Ciresi L.L.P.
The Patch Foundation
Twin City Fan Companies, Ltd.
Maurice J. Wagener, '57
*Morrie's Automotive Group **
Joanne L. Weber
Wells Fargo Foundation
Xcel Energy Foundation

John Butler Club

Gifts of \$2,500 to \$4,999

AGC Foundation
Andersen Corporate Foundation
Armetex, Inc. *
Steve, '68 and Lynette Bryant Buhler, Inc.
James R. Cargill II
Collins Electrical Construction Company
Bruce W. Engelsma
Engelsma Family Foundation
Mark H. Falconer, '68
*Minneapolis Oxygen Company**
Daniel Grider, '62
Timothy B. Hayes, '77
*LBP Mechanical, Inc. **
Ho-Chunk Nation
John R. Holland, '64
Horwitz, Inc. *
Hunt Electric Corporation *
Larson, Allen, Weishair & Co., LLP
National Association of Women in Construction
Tamara H. Olsen
Joseph P. O'Shaughnessy, '81
Rahr Foundation
Laudy E. Ribar, '49
*L. E. Ribar Company, Inc. **
Megan M. Roach
Scholarship America
Mark Skipper^S
Slawik Family Foundation
Summit Academy OIC

Target Foundation
Tennant Company Foundation
The Rotary Healthy Youth Foundation
United Parcel Service - Eagan

Dunwoody Club

Gifts of \$1,000 to \$2,499

Anonymous (2)
ABRA Auto Body
Adolfson & Peterson Construction Company
American Subcontractors Association of MN
Anagram International, Inc.
Jo Anne Anderson
Applied Business Communications, Inc.
Kay Phillips
ATEK and Acrometal Companies
James Basara, '75
Ronald R. Belschner
Sue A. Bennett
Dr. M. James and Nancy Bensen
Braun Intertec Corporation
C. William Briggs
Brock White Company
Buffalo Community Theater

Builders Association of Twin Cities
Canon Communications, LLC
Keith P. Caswell, '39
Chanhassen Chamber of Commerce
Barb S. Charboneau^S
Claude M. Anderson Electric Co., Inc. *
Coca-Cola Scholars Foundation, Inc.
Parker M. Congdon, '40
Thomas M. Crosby, Jr.
Custom Mold & Design, Inc. *
Harvey Dahl, '61
Mark W. Dalbey, '79
Adjustable Joist Company
Data Recognition Corporation
Mark Davy
Mark Davy & Associates, Inc.
Delano Area Dollars for Scholars
Diversified Coatings
Donald D. Dolan, '64
Dollars for Scholars
John R. Dolny, '41
Dorsey & Whitney Foundation
Robert A. Doty^S
Douglas & Mary Staughton Jones Foundation
Dunwoody Alumni Association
Golf Outing
Egan Companies

Thank you



Continued Learning

Continued Learning offers 17 credit based certificates, several Associates of Applied Science Degrees and a Bachelor of Science in Applied Management. Night time program completion requirements are flexible to accommodate all types of adult learners and many certificate programs include internships.

Dunwoody Club

continued

Electric Resource Contractors
Emerson Process Management
Rosemount, Inc.
Endres Processing, LLC
Fabcon, Inc.
Theodore A. Ferrara, '77
*Standard Heating & Air
Conditioning Company* *
Gary H. Frana, '62
Fred Babcock VFW No. 5555
James A. Frisell, '75
Goodin Company
Greater Metro Auto Dealers
Association
Griffin Petroleum
Duane J. Grundhoefer, '62
Milton D. Halvorsen, '40
Michael Hanson, '85
Peter A., '65, and Jane Hansen
Harris Companies
Evelyn Henry
LaMont J. Herman, '83
Hollenback & Nelson
Tim Holmberg, '82
Ruth A. Hutchins
Int'l. Brotherhood of Electrical
Workers
Allen C., '74^S and
Mary Anne^S Jaedike
Gary C. Janisch, '68
Jerry's Foods
Mark Jessen
Jessen Press
Rafelene C. Johanneck
William A. Jordan, '69^S
Ricky Langness, NEI, '93
Low Voltage Contractors
Luther Collision & Glass
William A. MacPherson, '76
James T. Mahan
Maple Grove Lions Club
Mate Precision Tooling
McGough Construction
Medina Electric, Inc.
William T. Melchert, '71
Michaud, Cooley, Erickson &
Associates, Inc.
Robert Midness
*Metro Machine & Engineering
Corporation*
Jean H. Milton
Minneapolis Builders Exchange
Minnesota Adult Literacy
Campaign Fund
Minnesota Teamsters Public &
Law Enforcement
Mississippi Valley Lumber Sash
and Door Assn.
Cornell L. and Wenda W. Moore
Jack T. Mowry, '71
MPMA Educational Foundation
Peter A. Nelson, '83
Raymond K. Newkirk, '65
Andrea Newman

North Central Electrical
Engineering Society
Northland Mechanical
Contractors, Inc.
Nystrom, Inc.
Douglas L. Olson, '68
Premier Electrical Corporation *
Olympic Wall Systems, Inc.
Opus Northwest, L.L.C.
Page Education Foundation
Parsons Electric
Caroline Passe
Bob Peck, '75
Paul and Marilyn Piazza
Minnesota Produce, Inc.
Polanie Club
Public Housing Agency
Robbinsdale Area Schools
Roosevelt High School
Foundation
Donald E. Ryks
John M. Schlagel, '70
John W. Schletty, '57
Frank Schochet, '35
*Schochet Family Fund
Scholarship Program
Administrators, Inc.*
Sheehy Construction Company
Talla Skogmo
Southways Foundation
SPS Companies, Inc.
State of Michigan
Strom Engineering Corporation
Craig Sulentic
Swanson & Youngdale, Inc.
T.E. Ibberson Company
Loren L. Taylor
The Sweitzer Foundation
The Whitney Foundation
Donn Thomas, '64
Richard A. Copeland
Thor Construction
Glenn T. Tilbury, '52
TNC Industries, Inc. *
Tom Egan, '81
James Truax
Truax Company *
Barbara Twedt
Twin City Glass Contractors
UMI Company, Inc.
United Association of Plumbers
United Way - Twin Cities
Van Iwaarden Associates
Bernhard van Lengerich
Veit Companies
Viking Electric Supply, Inc.
Dr. Richard^S and Valerie Wagner
Wells Fargo Foundation
Dennis A. Welsh, '62
Eleanor Winston
Dr. C. Ben Wright^S
Xsys Print Solutions
Jeff M. Ylinen, '79^S
Ziegler, Inc.

President's Club

Gifts of \$500 to \$999

Arthur Alexander^S
Allweather Roof
American Welding Society
Brandon Andersen
Architectural Sales of
Minnesota
Martin Arend^S
Sara Baker
Clayton Bartholow, '83^S
Beacon Bank
Border States Electric Supply
Robert M. Brandon^S
Donald R. Brattain
Sterling T. Brazier
Michael K. Buck, '73
Gerald Bugatti, '56
Builders Exchange of St. Paul
Carl Bolander & Sons Company
Carpenters Union Local 87
Dana L. Casey, '67
Cemstone Products Co.
John^S and Pamela Chandler
Dennis P. Chartrand, '70
Steel Structures, Inc. *
Michael J. Childs, '68
Co-Action Academic Resources
Cramer Building Services
Custom Drywall, Inc.
William D. Dahl, '81
Randy Darcy
Amondo Dickerson^S
Vernon L. Discher, '48
Doody Mechanical, Inc.
Al Einberger, '78
Engelsma Construction, Inc.
Freeport West, Inc.
Bernard W. Gaffron, '51
Thomas Gauthier, '66
Gauthier Industries Inc. *
Wayne Glanton, '46
David R. Graham, '76
Rack-It Truck Racks, Inc. *
Graybar Electric
Dale Greenwald
*Cass Screw Machine
Products Company*
Harlan E. Hallquist, '68
Hammel, Green and
Abrahamson, Inc.
Roger L. Headrick
Larry H. Hjelle, '51
Hosanna Lutheran Church
Edward P. Hudoba, '41
Indelco Plastics Corporation
J & L Steel Erectors
JE Dunn Construction
Barbara A. Jerich
Lee Jessen, '53
Gary L. Johnson, '61
Kenwood Alcoholic
Anonymous Group
KKE Architects
Peter H. Kramer, '61
L. H. Bolduc Company, Inc.
Jack R. Lake, '61
Thomas J. LeMay, '77
LeMay Electric, Inc. *
Leonard Street and Deinard
Bruce C. Lestico, '70
Automotive Electric Service *
Luther Memorial Church
Kenneth Malmstrom, '33
Marquette Community
Foundation
Mayer Electric Corp.
Richard D. McFarland
Mary P. Meador^S
Meier Tool & Engineering, Inc.
Metropolitan Mechanical
Contractors, Inc.
Roman H. Meuwissen, '61
Milaca Scholarship Foundation
Minnesota Community
Foundation
Minnesota Electrical Association
Minnesota Mold & Engineering
Mold Craft, Inc.
Molin Concrete Products
Company
Mounds View Public Schools
Nasseff Mechanical
Contractors, Inc. *
Richard A. Nelson, '62
Nordquist Sign Company, Inc.
North State Advisers &
Associates, Inc.
North Suburban Community
Foundation
Northland Concrete & Masonry
Company, LLC
Gary G. Novak, '63
Industrial Electric Company *
Omni Tool, Inc.
John J. Owens
Donald Pertinen, '59
Warren E. Phillips^R
Robert L. Porter, '70
Robert E. Poupore, '50 R
Precise Products Corporation *
Pro-Tec Design, Inc.
Pulse Products
R.G. Higgins and Associates, Inc.
Larry A. Raasch, '77
Steve W. Robinson, '60
David C. Russ, '01
Marjorie Sandberg
Schadegg Mechanical, Inc.
Gordon L. Schuster, '39
Becky^S and Bob Seemann
Kenneth J. Seifert, '78
Seifert Electric, Inc. *
Shaw/Stewart Lumber Co.
Sheet Metal Connectors, Inc.
Siemens Energy &
Automation, Inc.
Howard L. Siewert, '56
Laura Solarz^S
South Immanuel Church
Rothsay
St. Anthony Mobil, Inc.
Frank Starke^R
Stellar Contractors, Inc.
Dennis Stenquist^S

President's Club
continued

Christopher, '81, and
Jean Swingley
Toltz, King, Duvall, Anderson &
Associates
Jim L. Trucker, '61
Twin City Tile & Marble Company
United Electric
Elmer D. Wedel, '74
*Allan Mechanical, Inc. **
John P. Werler, '79
*Cobalt Electric, Inc. **
WTG Terrazzo & Tile, Inc.

Century Plus Club
Gifts of \$250 to \$499

Advance Shoring Company
Air Cold Supply-Ferguson
AITP Northwest Chapter
Jean Alm
AMEC
American Midwest Power
Manufacturing & Supply
Orland C. Anderka, '67
David D. Anderson, '71
Harold N. Anderson, '40
Andrew Tool Company
Paul Archambault, '76
Gilroy Arvig, '53
James A. Audette, '49
B.P.S. Incorporated
Douglas J. Basara, '80
Carol W. Bell, '60
*Bell Auto Service **
Ann Bollmeier, '76
Bossardt Corporation
Marvin Bosshart, '53
Darrell Brommer, '54
*Conrad Sheet Metal Company **
C.F. Haglin & Sons, Inc.
Campbell-Sevey, Inc.
J.J. Carboneau, '79
Carciofini Caulking Company
Century Construction
Clark Engineering Corporation
Rick D. Clevette
Concept Machine Tool Sales
Lewis R. Cradit, '54
Ella Crosby
Longview Foundation
Dana Daniels
Garnett B. Deters, '54
District 110 Education
Foundation
Diversified In Ground
Services, Inc.
George Doerr Family Fund
Morris L. Eisert, '62
Elgin-Millville Scholarship Fund
Richard Engholm, '70^S
Gary G. Engler, '67
*Engler Retail Construction **
Francis G. Feyerisen, '56
Norbert H. Fischer, '51
Douglas D. Fransen, '74

Dolores H. Fridge
Galaxy Mechanical, Inc.
Gartner Refrigeration -
Plymouth
James A. Gay, '86
Douglas G. Glenn, '70
Lester E. Goetzke, '57
*Midtown Manufacturing
Company **
Bruce W. Graffunder^S
John L. Hansen, '57
Leslie W. Hanson, '70
Harris Mechanical Contracting
Michael C. Harvanko, '92
Darrell J. Healy, '70
Stephen P. Hippe, '65
Jeffrey Holmers
Jerome A. Holtz, '76
Verlyn R. Husman, '74
Terry L. Hutchinson, '69
ICI Paints
John J. Morgan Company
Raymond E. Juengel, '56
Roland H. Jurgens, '65
Century Plus Club
Edward L. King, '62
John Klick^S
Mark A. Kramer, '75
Jon E. Krapu, '98
Ronald T. Kurtz
Robert L. Landon, '61
Andre Lewis
Arnold R. Lidfors, '40
*Quality and Service Machine
Tool Co. **
M. A. Mortenson Company
Shaun Manning^S
Master Mechanical, Inc.
Benito P. Matias, '93^S
Frank D. McVay, '81
MDC Wallcoverings, Inc.
Fred J. Menger, '64
MGS Machine Corporation
Midwest Mechanical Solutions
John G. Miller^S
Minnesota Air, Inc.
Kevin Murphy
Nardini Fire Equipment
Company, Inc.
Nedmac, Inc. *
Norwood G. Nelson, '60
North Central Tire Dealers &
Suppliers Assoc.
Northland Paving
Northside Agencies, Inc.
Kenneth H. Olsen, '41
Myles E. Opheim, '74
Arnold C. Peterson, '47
Charles Radloff^S
Gregory A. Randolph, '71
Gary R. Reimann, '65
Reimann, Inc.
M. Douglas Rolland, '67
David Rude^S
Jeffrey D. Rusinko, '03
James M. Schlemmer, '86
Bruce W. Schmitt, '67
Floyd H. Schneeberg, '41



Dunwoody students enjoy a game of flag football during the annual Fall Fling.

Donald C. Schroden, '71
John R. Schweers
William Seefert, '94
Sexton Printing
Wallace Sharp
Mark A. Shephard, '76
*Shep's Construction **
Robert M. Siegel
Mike Sime
Robert Skarsten^S
David L. Stanton, '73
Chad Strunk^S
Sun Mechanical, Inc.
Robert S. Suppan, '39
Gilbert E. Syverson, '74
T. Bryce & Associates, Inc.
James T. Teff, '64
The Seneca Group, Inc.
Richard Thomson^S
James A. Tilbury, '74
Tooling Science, Inc. *
Torrini Plastering & Decorating
Leslie R. Trapp, '73
United States Bowling
Congress
UPS - Minneapolis
David A. Wallner, '61
Forrest R. Walters, '65
Century Plus Club
Weber Electric
Donald C. Weber, '64
Weidner's Mechanical
Contractors
Kevin C. Weiland, '71
Mark A. Welshinger
Winona Heating & Venting
Alan E. Wussow, '69
*Al's Little Machine Shop **
Zero-Max, Inc.
Donald M. Zoubek, '86
Marvin G. Zweig, '70

Century Club
Gifts of \$100 to \$249
Anonymous (3)
Aaron Carlson Company
ADC Foundation

Robert L. Agrimson, '55
Olaf T. Aho, '41
Donald F. Alm, '51
Sverre H. Ambjor, '38
Earl H. Anderson, '60
Richard A. Anderson^S
Terry J. Anderson, '73
Donald L. Androsky, '80^S
Richard Arboleda^S
Aspen Research Corporation
Fay Awishus
Linwood L. Ayotte, '62
Bruce Bachman, '68
Robert J. Bach, '77
Peter R. Backlin, '72
Terry Backlund, '83
Warren A. Baker, '63
Gayle L. Basford, '56^R
Richard J. Baylon, '50
Henry E. Beadell, '69^S
Dale M. Beaumont, '78
Gordon W. Beneke, '59^R
Bennerotte Marketing
Agency, Inc.
Tony Benthin^S
Roger Berggren, '61
John H. Berg, '60
Otto Bernhard, '47
Thomas R. Bettinger, '68
Nathan Blommel^S
Roger P. Boleman, '65
Emily Bollensen, '96
Chuck A. Bowen, '66^S
Terrance C. Boyd, '63
Harold A. Brace, '57
Daniel N. Brandt, '74
Silas T. Brannan, '59
Randy D. Brennan, '74
Jay L. Brennecke^S
William N. Brisley, '41
Robert R. Brock, '70
Patrick Brose, '92
Darrel T. Brown, '75
Sarah Brown^S
Grant P. Bryngelson, '74
Peter A. Budge, '61
David M. Buending, '78
Harry L. Burke, '55
Wallace J. Burley, '65
Dean W. Burton, '61

Thank you

Century Club *continued*

David A. Carlson, '92
James E. Carlson, '64
Donald W. Carpenter, '85
Richard C. Castle, '60
Centraire, Inc
Warren D. Chapman, '57
Allan J. Chihak, '80
George F. Christen, '61
Kathleen Christopherson^S
Robert P. Christoph, '69^S
Gregory M. Clark, '74
Bradley Cleland, '99^S
John H. Connery, '59
Construction Results
Corporation
Gary W. Cook, '61,
Geriard Cook^S
Robert R. Cook, '63
W. J. Corbett, '58
Counsel Financial, Inc.
Walter A. Cox, '76^R
Don Craighead
Crawford-Merz Construction
Company
James L. Cullen, '76
Paul L. Cullen, '82
A. G. Cullen Construction, Inc. *
Ronald W. Curtis, '59
Everette J. Daigle^S
John F. Dee, '47
DiaServe, Inc.
Dennis F. D'Jock, '55
Donald J. Driessen, '59
Roy J. Dworakowski, '59
Ronald J. Dwyer, '64
R. J. Dwyer, Inc. *Custom
Builder* *
David A. Eastling, '71

Peter J. Eckberg, '76
Lester E. Eckhardt, '46
Clifford T. Edgett, '57
Patricia Edman^S
Donald L. Egerer, '56
Leo W. Eiden, '51
George A. Emanuelson, '53
Larry G. Enerson, '73
Edward W. Engelson, '49
Merrill N. Engquist, '40^R
Alvin P. Erlandson, '51^R
Kent A. Esby, '67^S
Willard R. Everett, '53
Walter G. Ewer, '55
David A. Feyereisen, '81
Orlin B. Fick, '55
Debra Filipovich, '76
Timothy Flugum^S
Mark S. Fogarty, '79
Joyce E. Forner, '83
Sheldon E. Fox, '40
William J. Franke, '75
Richard V. Franson, '50
Polly Friendshuh^S
Eeris Fritz^S
John E. Gardiner, '64
General Sheet Metal
George K. Granse Company, Inc.
James A. Girod, '67
Richard L. Goodin, '68
Stanley M. Graf, '70
Joel D. Grams, '82
Lawrence Gravell, '64
Phillip R. Graves, '61
Gary G. Griebel, '65
Ruth Grigsby
Jane M. Grimes^R
Jerome A. Grundtner, '73
Homer E. Grunz, '42
John J. Gulland, '69
Charles D. Gunder

Dolores M. Guptill
Gerald D. Gustafson, '54
Paul M. Gust^S
Kenneth A. Haagenson, '59^R
Timothy J. Haataja, '81
Roy A. Hager, '57
Julie A. Hagstrom, '92
LeDora Hankton^S
Anne Hanson
Kari Hanson
Scott D. Hanson, '81
Edith I. Haraldson^S
Jowharah Harris-Reid^S
Dale C. Hartman, '46
Ann M. Harty, '02
Evelyn Hasbrouck
Robert L. Hauer, '46
Derick Haug, NEI, '98
James E. Haugen, '64
John T. Hauser, NEI, '03
Timothy P. Hedicani, '77
Robert E. Hegstad, '79
Jay D. Hembroff, '75
Hemco, Inc.
Olga T. Henderson
Herbert H. Henschen, '58
Kirk G. Herman, '62
Ray E. Hildreth, '62
Ray's Auto Clinic *
Joseph J. Hillenbrand, '49
Keith D. Hill, '77
Robert W. Hoehn, '56
Dale Hoiseth, '49
John A. Holmes, '67
Jim Holzemer^S
Richard H. Homicke, '59
John Hoppe, '65
Cy D. Hornberg, '67
John C. Hosfield, '70
Hosfield & Associates *
Christine Howard
Joanne K. Howard
Marvin J. Huss, '64
J.H. Larson Electrical Company
Reynold R. Jager, '03
Douglas G. Jeranson, '60
Arlie W. Johnson, '52
Blake M. Johnson, '98
Larry M. Johnson, '57
Ronald G. Johnson, '59
Steve R. Johnson
Jerald A. Jones, '62
Wesley E. Jones, '75
David W. Kalina, '70
Donald E. Kalscheuer, '61
John G. Kaltenbach, '47
Donald F. Karpinski, '49
Gerald J. Kasat, '83
Dean J. Kasper, '73
Bruce M. Kaufman, '65
Jeffrey J. Keljik, '74^S
Lawrence M. Kelly, '65
Roger A. Kizzek, '37
Michael E. Klein, '80
George H. Klinkhammer, '48
Gary R. Kloncz, '60
Keith Kluis, '61
Kenneth H. Konrad, '64

James Koska, '05
Gerald S. Koskiniemi, '58
Ronald D. Kreinbring, '67
Robert R. Kreuzer, '58
Dean P. Kugler, '80
Harland L. Kuhlman, '48
Lowell J. Kuhlman, '74
Paul A. Kujak, '72
Jon J. Kukachka, '75^S
Jim L. Kurth, '50
Anthony Kurvers, '62
L & R Suburban
Landscaping, Inc.
La Crosse Mechanical, Inc.
Thomas E. Landsberger, '61
Willis Laraway, '51
Clinton O. Larson, '50
Harvey D. Larson, '49
Hubert L. Lauhala, '56
Annie Jo Leitschuh-Hansen
Brenda Lester^S
Ken P. Letourneau, '60
Gerald A. Letty, '61^R
Gerald M. Leukam, '75
Gary Levine^S
Gail M. Lofdahl
Leonard J. Ludescher, '40
Harold J. Luhmann, '73
Rolf R. Lund, '88
Willis W. Lund, '49
Lonny Lunn^S
Joseph M. Lynch, '82
Michael Maas^S
Gerald A. Mader, '67
Earl R. Madison, '58
Katie Malone^S
David Mansheffer^S
Marcy Construction Co.
Marketing Services Group, Inc.
John A. Markgren, '48
Charles O. Martin, '75
James Mathis^S
George Matsuzaki, '43
Donald W. McCarthy
Schwab-Vollhaber-Lubratt, Inc.
Dennis L. McGovern, '59
William J. McMahon, '71
Daniel J. McNamara, '84
John McShannock^S
Jerry M. Melvin, '69
David J. Mervin, '73
Robert P. Meyer, '72
Terry B. Mikkelson, '78
Thomas K. Miller, '74
William A. Miller, '63
Guy L. Milliren, '75
Michael T. Millonig, '74
Minneapolis Electrical JATC
Minneapolis South Rotary Club
Paul D. Miterko, '65
Ronald A. Mohrmann, '65
Robert A. Moore, '41
Gary A. Morem, '60
James C. Mortenson, '62
Charles B. Mueggenberg, '70
Mulcahy Company
David E. Muller, '81
Joseph D. Muller, '00^S



Marge Wood (left) a long time Dunwoody supporter, visits the new Interior Design program to learn first-hand about exciting career opportunities from Rhiannon Pankeke (center), fourth-quarter student, and Colleen Schmaltz (right), Interior Design instructor.

Century Club
continued

Leonard A. Murray, '56
Charles J. Myers, '74
Vernon K. Naley, '70
Brian D. Nelsen^S
Charles A. Nelson, '70
Conrad L. Nelson, '71
Robert J. Nelson, '66
Gary J. Neunsinger, '71
NIBCO, Inc.
Douglas A. Nichols, '62
Richard D. Nick, '65
Dora Noerenberg
Alan J. Norton, '71
Joseph Nosie, '53
Lloyd A. Nyberg, '40
Les A. Nystrom, '39
Kristina L. Oberstar^S
Terri Ocel^S
Dean E. Olson, '53
John R. Olson, '77
La Verne L. Olson, '56
Ortonville Plumbing and Heating Co.
Michael J. Osberg, '74
Kenneth R. Ostlund, '58
Jim H. Otte, '68
John G. Passe, '78
Steven G. Passe, '76
Fredrick L. Payne, '62
L. V. Pearson, '33
Katie Peerenboom^S
Jeffrey A. Penick, '92
Michael J. Pepek, '64
Steven W. Peplinski, '71
Alvin Petersen, '47
Floyd I. Peterson, '58
Leland J. Peterson, '76
Scott M. Peterson, '77
Richard E. Pettijohn, '47
Roger M. Pikus, '82

Edward J. Pinske, '51
Roger C. Plekkenpol, '73
Bruce Polaczyk, '64^S
Ed Potratz, '66
Julie A. Praus, '78
Vernon L. Prechel, '60
Dennis J. Purcell, '70
Questions & Solutions Engineering, Inc.
Stephan J. Reinarts^S
Duwaine W. Reinhardt, '80
Eldon A. Reinke, '62
Gary L. Remer, '65
Robert E. Renne, '64
Robert Reynolds
Richard L. Rezanka, '88
Robert A. Ricke, '64^S
Douglas Rickers, '63
Pete Rivard^S
Joseph Roemer^S
Kevin E. Rolf, '73
Hubert J. Rosch, '69
James A. Rossow, '57
Ernest G. Rude, '60
John E. Rudquist, '52
Thomas W. Rutledge, '61
Charles A. Ryan, '83
Vicki Sandberg
Reed E. Santa, '52
Marjory M. Sarkis
Mark J. Schindelholz, '75
David E. Schlueter, '78
Paul F. Schmidt, '57
James E. Schmitt, '75
Schroeder Sales Company
Elton E. Schuette, '51
Eugene E. Schurman, '56
Robert C. Schutz, '48
Schwab-Vollhaber-Lubratt, Inc.
Dale E. Schwanke, '64
Schwartz's Tools & Fasteners
Verdon E. Seegmiller, '60
*Rochester Tool & Die, Inc. **

Patrick Sette, '50
Brian Seviola^S
Barry Shear^S
Douglas L. Shelstad, '61
Wallace L. Sherard, '41
Mark G. Sherry, '87
John R. Siller, '53
Mark C. Silvernail, '72
Dennis C. Simonson, '61
Steve Sinke
Harvey J. Skoglund, '51
Ronald G. Slinger, '79
Daniel L. Smith, '52
Dean M. Soderbeck, '74^S
James L. Soderberg, '69
Sonus Interiors
William A. Sorenson, '40
South River Heating & Cooling, Inc.
South Side Lumber Co.
Albert Starshak
Ronald M. Steinbauer, '64
Thomas F. Stertz, '73
Mark E. Stevermer, '40
Richard J. Stjernstrom, '47
Donald W. Storlie, '63
Joe Stranik
William R. Strommen, '62
Thomas H. Suek, '84
Terry Sumrall^S
David G. Swanson, '86
Donald P. Swanson, '62
James C. Swanson, '55
Arcelle Taylor^S
Richard Tandyke
Richard J. Thibodeau, '79
Lisa M. Thomas^S
Henry S. Todd, '49
Chris Tomshine^S
John F. Townsend, '63
Trade Tools, Inc.
Donald B. Urquhart, '50
Edwin C. Victorsen, '40
Viega North America
Marcy J. Vonne, '93
Timothy A. Voth, '66
John E. Walkowiak, '70
Lu Verne A. Wallace, '71
W. F. Wanner
Richard W. Wayt, '53
Glen A. Wegner, '65
Paul H. Wegner, '53
Norman Welch, '72
Paul E. Wellen, '60
Frank Wells^S
Lawrence R. Whitaker, '65
Michael R. White, '84^S
Delroy Wiebolt, '59
Wild Wings of Oneka
Frank M. Winiecki, '60
Kenneth J. Witte, '85
Delano F. Woese, '60
Herb K. Wolfgang, '61
LeRoy Wolf, '49
Pepe Wonosikou^S
Woodruff Company

Matthew, '81, and Steven, '73, Worms Worms Lumber & Ready Mix, Inc. *
Jennifer M. Wrobel, '04
John M. Ylinen, '84
George Youngvorst^S
David E. Zoldahn, '68
Donald H. Zuercher, '52

Sponsors

Gifts up to \$99
Anonymous (6)
Courtney V. Abel, '68
Joseph D. Adam, '60
Christopher L. Adams, '07
Donald W. Adams, '69
Gene A. Adams, '61
Brent A. Adelman
John G. Ahlman, '74
Robert T. Aho, '48
Charles R. Alley, '66
Einar B. Alme, '57
Ralph G. Altenweg, '61
Rodney Amundson, '67
Douglas Anders, '62
Arthur L. Anderson, '55
Brandon W. Anderson, '06
David E. Anderson, '64
Diana M. Anderson
Jack R. Anderson, '07
Matthew J. Anderson, '07^S
Mike A. Anderson^S
Peter Anderson, '97
Ronald C. Anderson, '68
Stanley C. Anderson, '58
Stanley E. Anderson, '49
Timothy D. Anderson
Tyler L. Anderson, '07
Edward J. Andrajack, '74
Pete Andresen, NEI, '81
Greg S. Andrie, '79
Daniel W. Andrs, '80
Gilson Arabadji, '07
David E. Arnold, '48
John E. Arnold, '75
Glenn A. Aschenbeck, '73
Jeremy S. Atkinson, '07
Lynn D. Austin, '74
Darrell M. Ayers, '57
Mosley A. Ayinde, '07
Ronald J. Backes, '60
Scott Bader
James E. Baeyen, '59
Jacob E. Bailey, '07
Kohl R. Bailey, '07
Robert C. Ballard, '67
Gary D. Ball, '73
Jermaine R. Barnes, '07
Harley R. Barton, '76
Michael J. Bates, '80
Lawrence J. Batkiewicz, '55
Shawn P. Battcher, '91
Edward A. Bauer, '67
Trent T. Bauer, '07
John Bautch, '98
Dorothy V. Baxter



More than 450 students from area high schools in the Twin Cities visited Dunwoody on January 5, 2007 to learn about different careers during Career Jam, an event sponsored by the Twin Cities North Chamber of Commerce. The event also provided a post-secondary resource fair held in Dunwoody's Decker Auditorium.

Thank you

Sponsors

continued

Mark J. Beckers, '83
James R. Beckmann
Martin F. Beer, '52
Brent C. Beery, '84
George R. Belanger, '71
Michael P. Benedetti, '07
Peter T. Beniares, '59
Marcus T. Benoit, '07
Michael P. Benson, '69
Robert C. Benson, '57
Robert Bentz, '94^S
Richard C. Berens, '06
David R. Berg, '73
Gene A. Berg, '75
James R. Berg, '74
Timothy E. Berg, '80
Merle R. Berkeland, '59
Christopher J. Bernsdorf, '85
Ralph L. Bernstein
Andrew J. Berquist, '07
Scott A. Bever, '07
Peter J. Bibelhausen, '07
Mark A. Billman, '81
Craig S. Bindert, '70
Jeff Bixby^S
Steven P. Bjerke, '92
Lon Bjornrud
Damon J. Blake, '98
Austin L. Blank, '07
Steve Blettner, '79
Dion J. Block, '06
Kenneth R. Blomquist, '62
Lester Bly, '53
William D. Boeser, '84
Melvin Boettcher, '47
Jeffrey R. Bohl, '06
John Bolich, '60
William E. Bonebrake, '66
John N. Bonsness, '76
Clinton Booker, '07
Allan D. Boucher, '61
Dawn Bradley^S
Grant C. Bragg, '07
Jack B. Brancel, '74
Ronald L. Brandly, '48
Kristoffor A. Branstetter
Kenneth V. Brauns, '50
Randall W. Bredenber, '69
Joseph E. Breitwieser, '07
Lynn Brekke, '79
Dennis V. Brendemoen, '56
James W. Brengman, '07
James E. Bresnahan, '52
Mike D. Brewbaker, '00
Robert A. Briese, '60
Ross Brower^S
Christopher J. Brown, '06
Dennis A. Brown, '63
Charles D. Browne, '07
Ann Browning^S
Thomas H. Brown, '61
Roger Bruemmer, '54
Jon Buchal, '56
Ronald Buchholz, '64
Paul R. Bueltel, '66



Ramona Moore and her family toured the new Hub and Recognition Hall when they came to Dunwoody to see their brick, given in memory of Ramona's husband, Walter Moore. Walter was a 1959 Electrical alumnus and former president of Muska Electric. He passed away in 2004.

Conrad M. Buhr, '76
Earl Bukowski, '62
Elizabeth Bullon, '06
Jason Burns^S
Anthony A. Busch, '07
David J. Busch, '77
David Busken, '78
Delmar Bussler, '52
Thomas A. Butts, '79
Jon Buyck^S
Michael Buystedt, '77
Clarence H. Byersdorfer, '63
Jimmy D. Callaway, '07
Robert Calvert, '76
Leonard R. Campbell, '59
Ruth Ann Campbell
Robert D. Carling, '38
Brent C. Carlson, '07
Clarence S. Carlson, '50
David M. Carlson, '07
Leonard C. Carlson, '42
Robert D. Carlson, '56
Anthony J. Carter, '06
Loren E. Case, '57
Robert J. Casey, '52
Patrick J. Cavanagh, '63
Kiangkrai Chanachai
Richard I. Chantry, '77
Donald A. Chartier, '60
Jeff Chase^S
Pratana Chayabutr, '76
Philip Cheng, '99
Jeremy L. Chouinard, '07
Clyde H. Christenson, '43
Yun-bok Christenson^S
Lynn J. Christiansen, '75
David Christopherson, NEI, '60
Darrel G. Clark, '57
Jon L. Clausen, '76
Marilyn J. Clemens^S
Garry C. Clem, '07
Janet L. Cobus
Alvin V. Collins, '68
David J. Conat, '63
Kyle M. Conelly, '07
Jack L. Cook, '63
William L. Coombe, '61
Joseph M. Coons, '06
Theresa Corey^S
James T. Cork, '06

Todd E. Corniea, '79
Gary J. Corr, '58
John D. Costello, '49
Ronald K. Cota, '64
Amber L. Coty, '07
William F. Coutier, '51
Leslie W. Craig, '51
Glenn H. Crown, '71
MacGreggor W. Curran, '07
Vincent M. Dahl, '87
George Damjanovich, '53
Michael Danek, '07
James J. Daniels, '74
Chad A. Danielson, '07
Gregory L. Darsow, '06
Carrie Davenport
Gerald L. De Laittre, '55
Timothy T. Deeny, '73
Joseph D. DeLorme, '01
Peter J. Demma, '49
Thomas R. Denfeld, '55
Peter K. Deutz, '06
Adrian A. Devries, '57
Matt DeVries^S
Larry R. DeWall, '65
Donald E. Diesen, '67
John A. Dietz, '66
Christopher J. Dignan, '07
Arnetta C. Dill
Amy^S and Sam DiPaola
Kristopher T. Dirkman, '07
Blake J. Doblinger
Franklin J. Dolezal, '66
Gary W. Domstrand, '60
Michael Donnelly, NEI, '00
Robert J. Dorn, '56
Michael Dorosh, '35
Darren J. Dougla, '06
Frederick Dreischerf, '48
James T. Droegemueller, '63
Thomas R. Ducharme, '07
Larry J. Dudycha, '75
Donald T. Duellman, '62
Maurice Duffy, '59
Jerry Durbin^S
James C. Durose, '63
David DuVal, '94^S
Alice Duzan^S
Victor G. Dynneson, '77
Thomas P. Dziekiowski, '65

Ken G. Dzwonkowski, '79
William P. Eckenrode, '07
Phillip G. Eklund, '36
Richard C. Ellingsworth, '74
Frank M. Elliott, '48
Thomas Elliott, NEI, '88
Max J. Elsasser, '47
Bernard W. Elvendah, '73
Jason E. Emrick, '02
Henry P. Endres, '77
George Engdahl, '50
Michael C. Engebritson, '63^S
John O. Engfer, '61
J. G. Englund, '53
Richard D. Engstrom, '82
Derek A. Ennenga, '07
Allen J. Erickson, '68
David P. Erickson, '78
Earl R. Erickson, '47
Ritchie A. Erickson, '99
Robert E. Erickson, '65
Richard Ericson, '58
Nicholas J. Erway, '72
Helen T. Esala
Aaron Escher, '07
Oren W. Farnum, '47
Jesse D. Farr, '07
Gordon N. Feaski, '50
Michael J. Feesl, '64
Jay W. Feider, '82
Harvey L. Felber, '34
Robert J. Ferris, '50
Shawn R. Field, '07
Ann V. Fincham, '79
Dudley R. Fleming, '73
Robert J. Follen, '50
Gary M. Ford, '06
Glen Fors, '48
David J. Fox, '06
Michael J. Frank, '69
Lester P. Frederick^S
W. J. Freding, '61
Carol Freeman^S
Edward A. Freeman, '37
Zachary M. Freeman, '07
Charles French, '62
Lee Frisvold, '91^S
William D. Fritz, '63
Thomas M. Fudali, '70
Fred Fuehrer, '38

Sponsors

continued

Ray Fuerst, '60
 David J. Gaard, '72
 Greg Galatz, '77
 Arthur J. Gale, '58
 Shana H. Galloway, '07
 Jose L. Gamino-Hernandez, '06
 John W. Gannon, '83
 Arnold J. Garbers, '60
 Roger Garner
 Jesse M. Gaston, '07
 Glenn E. Gavic, '83
 Glenn S. Gavic, '65
 Troy D. Geheren, '82
 Bruce W. Geister, '66
 Lorrie B. Gemmill, '76
 Lee H. Germann, '61
 Mohannad Ghawanmeh^S
 Cynthia L. Gilbert, '06
 Kent A. Gildner, '63
 Kenneth M. Gileck, '07
 Thomas H. Gilmore, '58
 Lindahl B. Gleason, '55
 James A. Glidden, '62
 Timothy Gnitka^S
 Francis R. Godfrey, '42
 Gary L. Golay, '69
 Kimberly J. Goodin, '07
 Travis Goodin, '06
 Heather Goodman^S
 Charles F. Gornik, '64
 James R. Grant, '73
 Kevin T. Greeninger, '07
 Shelley Grevillius^S
 Darrell J. Grewe, '59
 Gordon Groseth, '56
 Benjamin J. Gross, '06
 Brian C. Grotte, '07
 John R. Grotz, '07
 Roy L. Groves, '50^R
 Dennis R. Grubish, '60
 Eugene N. Gruhlke, '50
 Ronald D. Grutt, '56
 Christopher J. Guemmer, '07
 William L. Gullifer, '66
 Duane Gunderson, '50
 Gary J. Gunderson, '69
 Larry O. Gustafson, '67
 Joshua M. Gust, '07
 Glenn R. Haagenson, '64
 Rebecca Haddad^S
 Bruce Haefemeyer, '68
 John N. Hall, '90
 Bradley D. Halvorson, '85
 Neil A. Halvorson, '02
 Alois L. Hanek, '51
 Victor L. Hanks, '58
 Robert H. Hanscom, '68
 Donald T. Hansen, '48
 Michael J. Hansen^S
 Shanna Hansen, '98
 Kenneth S. Hanson, '49
 Marvin H. Hanson, '47
 Verdell C. Hanson, '65
 Andrew J. Hapka, '07
 Howard E. Harmon, '59

David G. Harmonick, '81
 Michael J. Harmon, '85
 Melissa and Mat Harrison
 Richard G. Harrison, '80
 Daniel H. Hartley
 Ronald W. Hartung, '66
 Jonathan T. Hassenfritz, '07
 Cameron Haugland, '75
 Stephen P. Hauser, '07
 Clyde B. Hawkins, '55
 Timothy J. Hawkinson
 Royal T. Hayes, '47
 Terry A. Hayes, '73
 Jerry Heath^S
 Jerald B. Hegge, '88
 Phillip Heine, '76
 Lyman F. Hein, '49
 Jean R. Heinsohn, '54
 Maurice Helgeson, '55
 Bradley T. Helget, '07
 Gerald Helling, '67
 Kim Helm^S
 Neal Heminger, '83
 Gregory Henderson, '07
 Austin P. Hendrickson, '42
 Emory Hendrickson, '62
 Morris D. Henjum, '71
 William H. Henning, '48
 Paul D. Hennem, '06
 William J. Hermann, '69
 Nicholas W. Hertelendy, '06
 Michael S. Herzog, '89
 Jack Hettwer
 L. G. Heutmaker, '51
 Roger W. Heyda, '62
 Dan J. Hill, '81
 Susan Hitchings
 Roy Hobbs, '62
 Angela L. Hodges, '07
 Jeffrey Hoffman, NEI, '00
 Gus Hoffmann, '60
 Anthony R. Hollenback, '07
 Ryan T. Hollihan, '06
 LeVern F. Holmes, '35
 Matthew R. Holmes, '06
 Paul T. Holmes, '57
 Patrick M. Holohan, '69
 Ronald E. Holscher, '69
 Tobias J. Holthaus, '07
 Jeremy A. Holweger, '07
 John Honey, '73
 Mike Hoops, '68
 Wayne Hoops
 Amanda R. Horn
 Betty Howard^S
 Tyler E. Hultman, '07
 George D. Hunkins, '50
 William M. Huskamp, '07
 Jeff B. Iisakka, '76
 James Ingemunson, '66
 William S. Ingham, '60
 Larry L. Jacobson, '69
 Warren L. Jacobson, '60
 Travis A. Jacobs, '07
 Bernard C. Jahn, '54
 David B. Jardine, '67
 David Jarzyna^S
 Dale C. Jensen, '71



Rafelene Johanneck (center) learned how her gifts to the William F. "Tiny" Johanneck Scholarship Fund made a difference to scholarship awardees Jeremy Williams (left) and Matt Brust (right). Mrs. Johanneck established the fund in memory of her husband, Tiny Johanneck, a 1953 graduate in sheet metal, who passed away in 1995. Tiny was deeply committed to Dunwoody throughout his life. Through their scholarship fund, she continues Tiny's legacy, and continues to be active at the college today.

Mark A. Jenson, '06
 Allen C. Jergenson, '72
 Keith^S and Sharon Jirak, '01^S
 Lloyd J. Joachim, '48
 Anthony A. Job, '06
 James H. Johannes, '47
 Thomas R. Johnsen, '79
 Charles A. Johnson, '56
 Dennis L. Johnson, '65
 Donald R. Johnson, '42
 Gary M. Johnson, '07
 James E. Johnson, '76
 James A. Johnson, '65
 James H. Johnson, '77
 Jeffrey S. Johnson, '76
 Jeremiah R. Johnson, '07
 John T. Johnson, '93
 Joshua A. Johnson, '07
 Nicholas A. Johnson, '07
 Robert I. Johnson, '50
 Scott A. Johnson, '80
 Stephen R. Johnson, '75
 Terry E. Johnson, '68
 Trent D. Johnson
 Vernon D. Johnson, '58
 Wade R. Johnson, '75
 Walter C. Johnson, '56
 Warren J. Johnson, '65
 Daniel C. Johnston, '07
 Francis W. Johnston, '34
 Joseph C. Jolicoeur, '07
 Robert E. Jones, '49
 Russell P. Jorgenson, '53
 Joseph F. Palen Company
 Robert D. Joseph, '59
 Barbara Josephs
 Donald E. Josephson, '57
 Herbert W. Josephson, '58
 Shah Jourdain
 Kristin M. Julsrud, '06
 Nathaniel D. Kaar, '07
 Leon J. Kachinske, '06
 Michael P. Kalmes, '07

David J. Kaminen, '84
 Matthew D. Kane, '06
 Michael J. Kappelhoff, '07
 Donovan C. Karg, '54
 William T. Kariniemi, '07
 Justin S. Kaynes, '07
 Michael A. Kazimer, '95
 Robert A. Keepers, '69
 David T. Kelley, '07
 Brian D. Kelly, '71
 Bryan S. Kelly, '79
 Justin D. Kelly, '06
 Kerry L. Kern, '93
 Theodore J. Kern, '56
 Debra Kerrigan^S
 Lou Kharrat
 Leslie C. Kiffe, '81
 Bryan J. King, '06
 Janna R. King
 Jeffery A. King, '96
 LeVern Kingsberg, '66
 Brian J. Kirby
 Joshua M. Kleckner
 Justin T. Kleinman, '00
 Tom H. Kleinman, '78^S
 Cara J. Klossner, '07
 Chris Klunder
 Kevin C. Knapke, '89
 Ryan D. Knutson, '07
 Thomas J. Knutson, '81
 Arman B. Koehler, '07
 Charles W. Koerner, '78
 Brandon C. Kohler, '07
 Roger J. Kohler, '86
 Edward J. Kolinski, '34
 Stanley Kondziolka, '41
 Harry Kopacz, '35
 Melvin R. Koski, '49
 Larry W. Kraatz, '72
 Dennis R. Kramer, '69
 John J. Kranitz, '74
 Bradley A. Krantz, '78
 Stephen W. Kranz, '71

Thank you

Thank you

Sponsors

continued

Gary M. Kratch, '72
Jeffrey Krause, '94
Deborah Krienitz
Joseph W. Kriha, '60
Frank J. Krmpotich, '53
Shane L. Kron, '01
Mathew A. Krull, '88
Gerald R. Krzmarzick, '56
Paul D. Kujawa, '83
Robert W. Kummer, '66
Roy V. Kundert, '47
Arnold H. Kunkel, '57
Bruce W. Kupfer, '78
Chad Kurdi^S
E. J. Kurth, '63
Lloyd E. LaBorde, '55
Joseph Lahoske, '59
Kyle D. Lakanen, '07
Matt N. Lammi, '40
Wilbert J. Lammi, '60
David Lamphere, '72
Thomas A. LaNasa, '78
Lucas J. Landin, '07
Patrick R. Lantz
Steven P. Larcom^S
Robert Larkin, '94
Robert A. Larsen
Robert J. Larsen, '70
Jennifer Larson, '97
Ross A. Larson, '07
Turner S. Larson
Warren V. Lassen, '49
Jeffrey N. LaVigne, '64
Richard J. Lawson, '52
William D. Lea, '59
Douglas J. Lecheler, '07
Adam M. Lee, '06
Maowee A. Lee, '07
Phillip K. Lee, '06

Owen J. Leeser, '81
Kevin J. Leisdon, '06
Jeremy J. Leisenheimer, '06
Richard H. Leitschuh, '73
Jane LeMay^R
Fred Lemke
Samuel H. Leon
Gaylerd Lieder, '55
Victor A. Lien, '68
Richard P. Lilla, '58
Kevin R. Lillie, '06
Brandon A. Lindberg, '07
Edward B. Lindberg, NEI, '03
Dean K. Lind, '59,
Gregory M. Lindholm, '72
Anthony W. Lippert, '70
Steven V. Loehlein, '07
Ronald L. Logli, '67
Gerhard E. Lokre, '50
Allan R. Loney, '70
Andrew R. Loney, '07
Brandon J. Long, '07
Louis J. Luberacki, '77
Adrian S. Luce, '07
Terry Luke, '66
Lawrence A. Lundeen, '72
John F. Lundemo, '46
Rachel Lund^S
Rita Lusky
Joseph D. Lynch, '06
Bradley Lynum
James A. Mackey, '83
Kyle J. Mack, '07
Dean A. Mahlke, '52
Marlin W. Malherek, '58
Molly Malone^S
Dennis Manderfield, '55
Fletcher B. Manning, '07
Donald W. Manoleff, '49
Anthony M. Manthei, '07
Joseph W. Mara, '67
Robert M. Marchand, '70

Brandon S. Marich, '06
Marilyn L. Marion^S
James J. Markey, '90
Joan Marks
Michael A. Marra, '01
Scott L. Marsyla, '06
Ann Martin
James E. Martin, '81
Kelly T. Martin, '07
Robert W. Martin, '38
Thomas J. Martin
William S. Masloski, '78
Harry W. Mattson, '54
Cassandra L.
McBeain-Marreel, '07
Nathan D. McCoy, '07
Lenora McCray^S
Robert L. McCullough, '47
Patrick McGrath, NEI, '88
Kathleen A. McGuire, '06
Gary M. McInerney, '62
Lyle L. McMurchie, '57
David McNamara, '90
Corey G. McNeal, '06
Archie McWilliams, '59
Scott R. Mead, '61
Marlowe P. Medland, '77
Lloyd Meeker, '55
Richard L. Melchior, '51
Jerome H. Melody, '76
John J. Menne, '58
Adam S. Merritt, '07
Joel N. Mesaros, '06
Henry B. Messer, '52
Gerald P. Messing, '84
Dean R. Messner, '76
Nicholas B. Meyer, '06
Robert D. Meyer, '60
Ronald B. Meyer, '61
Timothy A. Meyer, '87
James Micheletti^S
Benjamin D. Mickelson, '07

Jeffery M. Mickley, '07
Raymond J. Midlo, '81
Eugene V. Miller, '75
Matthew L. Miller, '06
Patrick A. Miller, '07
Peter Miller, NEI, '99
Donald R. Mittelstadt, '50
Richard J. Molnau, '62
James D. Montzka, '60
Dennis R. Moody, '66
Deborah A. Moore
Jonathon Moore^S
Rodney D. Moser, '86
Roger Moseson, '45
Steve Mountin, '75
Keith A. Mrotek
Molly Murawski^S
Bridget R. Murphy, '00^S
Edwin T. Murphy, '38
Jeffrey Murphy, '94
Krystle Murphy, '07
Tyler B. Murphy, '06
Daniel L. Murray, '82
Jason L. Myers, '06
Andriy Mykytyn
David A. Nagel, '75
Christine Nechanicky
James R. Neilson
Herbert E. Nelson, '57
John A. Nelson, '66
Jerry L. Neubauer, '67
Dustin D. Neuberger
Robert A. Neumann, '65
Edwin J. Newinski, '54
Jackie Newman, '00
Leonard C. Newquist, '58
Van D. Nguyen, '01
Peter F. Nieder, '66
Delvin A. Niemela, '46
Gary R. Nikolai, '82
Emilie Nimmo^S
Ross A. Noak, '97



A fireworks display outside the Robert W. Carlson Commons east entrance publically kicked off Dunwoody's *Good to Great Campaign* on September 27, 2006

*Business owned/operated by Dunwoody alumni ^S Current Dunwoody employees ^R Retired Dunwoody employees

Sponsors*continued*

Olaf A. Norberg, '57
 Norvin L. Nordling, '64
 Bill Nordness, '57
 Nicholas W. Novak
 Daniel C. Nuessle, '07
 James Nyberg ^S
 Leonard W. Nyholm, '57
 Jesse J. Oates, '07
 Bernard A. O'Connor, '83
 Dale M. Olson, '60
 Daniel K. Olson, '66
 Dustin T. Olson, '07
 Gary E. Olson, '68
 Gordon J. Olson, '55
 Keith R. Olson, '69
 Robert O. Olson, '60
 Sylvester Onyeneho ^S
 Orlin A. Ortloff, '56
 Michael J. Otte, '02
 John Parizek
 Michael G. Parlin, '73
 Harvey A. Parvi, '76
 Leo Parvis ^S
 Cindy Pasiuk
 Fausto D. Paucar
 Lawrence E. Paulsen, '79
 Eugene K. Paulson, '50
 Carol Paulus ^S
 Thomas R. Paur, '58
 Roger A. Payne, '58
 Vance L. Peckham, '79
 Ryan M. Peek, '07
 John R. Peick, '85
 Robert E. Peiffer, '62
 Matthew L. Pepin, '06
 John Perhay, '66
 Nickolas A. Perlick, '07
 DeWayne S. Petersen, '65
 Brian R. Peterson, '68
 Leroy A. Peterson, '53
 Maurice V. Peterson, '57
 Palmer E. Peterson, '58
 Paul O. Peterson ^S
 Robert L. Peters, '65
 Francis J. Petron, '67
 Richard Pierret, '63
 Grace E. Pierson
 Jeffrey A. Pinsky, '80
 Robert J. Pirkl, '63
 Patricia A. Pitcher, '81
 Daniel M. Plaisance, '84
 Kevin J. Pleban, '07
 Richard C. Power-O'Brien, '61
 Ryan G. Pregler, '07
 Robert J. Prell, '76
 Robert Pribnow, '68
 Scott A. Proctor, '06
 Dan M. Quale, '77
 David M. Quale, '77
 Verlyn J. Raaen, '67
 Nolan A. Radford, '07
 Reuven Rahamim, '76
 Terrance O. Rankin, '07
 Tuere L. Rankin, '07
 Glenn R. Rasmussen, '69 ^R

Brian L. Ratajczak, '07
 Henry F. Ratajczak, '64
 Thomas P. Redman, '72
 Robert J. Regan, '72
 Eugene L. Rehaume, '49
 Gary Reiman ^S
 Melinda Reiter-Schroepfer ^S
 Michael Resnick ^S
 Mark F. Rettig, '68
 Carroll E. Reynolds, '69
 Michael R. Rhode, '07
 David W. Rickard, '77
 David R. Ridgle, '06
 Charles J. Riehl, '56
 David J. Rieke, '68
 Myron J. Rieker, '78
 David M. Ries, '07
 Burnell N. Robbins, '42
 Edmund Robertson ^S
 Bertram L. Robinson, '63
 Jason Robinson, '99
 Erik M. Roche, '06
 Leanne D. Roehl, '04
 Lawrence Rogers, '62
 Mercedes A. Rogers ^S
 Donald R. Rohweder, '60
 Leslie Root ^S
 Andrew T. Rosa
 Leon L. Rosenthal, '49
 Gerald E. Ross, '58
 Michael J. Rossing, '68
 John C. Ross, '60
 Lon D. Rossow, '82
 Michael D. Rostvold, '07
 Leah Roue, '00 ^S
 Jacob R. Rude, '07
 Barbara Rummel
 Larry R. Rumpza, '06
 Dale T. Rusnacko
 James G. Russell, '51
 Thomas E. Russell, '80
 Sean J. Rustad, '07
 Gregory M. Ruth, '07
 Patrick M. Rutten, '76
 Wallace R. Rypkema, '48
 James Saaranen, '63
 Marlin Sackett, '61
 Sales Engineers, Inc.
 Harry E. Samways, '41
 Gerald C. Santell, '69
 Renee M. Sauerbrey
 Thomas J. Sayer, '07
 Robert D. Schafer, '71
 David C. Schapman, '75
 Harvey L. Scheffert, '61
 John T. Schell, '53
 Neil M. Scherber, '69
 Troy R. Scherping
 Lynn J. Schlarb, '69
 Kyle R. Schmidt, '07
 Richard A. Schmidt, '06
 Karen Schmitt ^S
 Robert J. Schmitt, '76
 Kenneth Schneeberg, '71
 Eugene Schneider, '48
 Wayne F. Schoeneck, '77
 Glenn W. Schoenrock, '82
 David C. Scholz, '62

Luverne W. Schreiber, '49
 Jacob J. Schroeder, '07
 Rene L. Schrupp, '76
 Neil J. Schultz, '66
 Tia L. Schultz, '07
 Shea M. Schut, '07
 Patrick J. Scoles, '49
 Michael J. Scully, '68
 Mike Sell, '59
 Travis J. Serres, '06
 Irene R. Serr
 Marge Serr ^S
 Richard K. Sexton, '54
 Chester F. Shattuck, '48
 Peter C. Shaw, '07
 Daniel R. Sheffer, '70
 John J. Shefland, '70
 Patrick J. Sheridan, '57
 Philip E. Sheridan, '54
 Britannia A. Shoberg, '07
 Jerry Shore, '65
 Andrew W. Siebenaler, '07
 Wayne A. Simoneau, '57
 Frank R. Simon, '66
 Sirius Communications, LLC
 Kevin R. Skow ^S
 Irma H. Slocum
 Ronald D. Smart, '66
 Vern R. Smerud, '62
 Matthew C. Smigleski, '07
 Bruce A. Smith
 David C. Smith, '73
 Donald E. Smith, '55
 Robert J. Smith
 Noel D. Snare, '76
 David Snyder, '63
 Beth Soberg S
 Satiya C. Solomon, '01 ^S
 Edward A. Sonksen, '56
 Peter J. Sorgert, '07
 Anthony W. Speiker, '64
 Mark W. Stabnow
 John A. Stachnik, '07
 Lee J. Stapf, '02
 Vernon Stark, '49
 Louis E. Steffen, '46
 Oscar W. Steffen, '45
 Kristine Steimann, '06
 James B. Stevens, '07
 Kyle L. Stevens, '07
 Lloyd W. Stevens, '45 ^R
 Curt J. Stirzl
 Thomas J. Stolarek, '81
 David S. Stolte, '81
 Jesse J. Stone, '07
 Christopher J. Strand, '68
 George E. Stuber, '54
 Erin Sulliban, '05
 Vernon C. Sundberg, '49
 Travis J. Sundell, '07
 Hunley Surratt, '48
 Melvin L. Sutter, '48
 Bruce A. Svendsen, '66
 Richard Svenson, '64
 Adam M. Swalley, '07
 Robert B. Swanke, '72
 Peter M. Swanlund, '68
 Floyd M. Swanson, '49

Ryan D. Swanson, '07
 Wayne R. Swenson, '69
 Justin A. Sylva, '07
 Albert A. Tafoya, '49
 Joseph P. Tarnowski, '87
 Michael L. Taylor, '06 ^S
 Richard G. Tessmer, '59
 Sabrina Thaldorf S
 Xue Thao, '07
 Timothy J. Thilmany, '03
 Bradley Thimmesch, '00
 Gil Thoele, '51
 Stanley Thoe, '49
 Robert G. Thomas, '61
 Joseph Thomas, '48
 Brent P. Thompson, '07
 Harlan L. Thompson, '55
 Nathan A. Thompson
 Robert D. Thompson
 Andrew M. Thurk, '07
 Wilmer A. Tiede, '51
 Steven Toftely, '75
 Chester R. Tollefson, '47
 John H. Toohey, '74
 Tony C. Tran, '06
 Burton J. Tranvik, '48
 Keith D. Trask, '07
 Fritz Trcka, '60
 Bernard R. Trenda, '75
 Dan R. Triplett, '79
 Frederick J. Tripp, '51
 Donald Trippie ^S
 Robert K. Truhlar, '47
 Luke T. Tulenchik, '07
 Robert E. Tunheim
 Albert Turek, '56
 Cole M. Turner
 Brad L. Ullom, '74
 William F. Unke, '65
 Joshua F. Urman, '06
 Ronald Valley, '58
 Terrance W. Vander Eyk, '70
 Nhia C. Vang, '07
 David J. VanHout, '91
 Julio C. Ventura, '07
 Jeffrey E. Vichorek, '70
 Veown Victorsen
 Preston V. Villavicencio, '07
 Mitchell E. Voeltz '07
 Daniel M. Volney
 Clifford L. Voxland, '50
 Austin R. Wagner, '07
 Ashraf Wahba
 William F. Walker, '55
 Dennis Walkowiak, '64
 Todd P. Wallin, NEI, '02
 Wally McCarthy's Chevrolet-
 Cadillac
 Dominic D. Warden, '07
 Robert W. Ward, '68
 Lori Warren
 Julius F. Waskosky, '47
 Ryan M. Weed, '07
 Kim Wegner, '94
 Melvin W. Weiss, '51
 Joseph A. Welke, '74
 Paul L. Welshans, '61
 Scott D. Wendt, '07

Sponsors continued

Myron Wentzel, '55
 Marinus Westerham, '62
 Timothy Westland, '07
 Douglas N. Westlund
 Steven C. Westlund, '74
 Morry Westphal, '57
 Charles Westra, '53
 Anton Wettstein, '99
 Glen R. Weum, '64
 Paul T. Whelan, '07
 Denis A. White, '67
 Robin L. Whitney^S
 Orlow Widvey, '51
 Michael A. Wiebold, '68
 William F. Wieseke, '62
 Alf Wiik, '62
 Bruce K. Wilen, '76
 Heidi Williams^S
 Roy E. Williams, '72
 Dennis J. Willis, '67
 Robert C. Wilson, '55
 Andrew Winkel, '06
 Mark D. Winter, '03
 Lenny S. Witucki, '66
 Dale J. Witzke, '67
 Walter P. Wojciak, '06
 Richard G. Wolden, '57
 John Wolff, '48
 Nancy J. Wolf, '91
 Dale Wolken, '92
 William A. Wolters, '70
 Michael D. Wood, '66
 Nicholas J. Wood, '07
 Michael S. Woods, '07
 Richard E. Workman, '70
 Robert K. Wright, '67
 Murray P. Yeager, '05^S
 Colin R. Yennie, '64
 Howard M. Ylitalo, '66
 Jason M. Young, '07
 Ray Yuzna, '71^S
 Norbert J. Zahler, '52
 Ronald J. Zechmeister, '64
 William L. Zemke, '66
 Bradley N. Zimney, '07
 Frederick L. Zorn, '65
 Dennis R. Zwaschka, '86

DUNWOODY LEGACY ASSOCIATION

The *Legacy Association* recognizes donors who have provided for the school through their wills, trusts, gift annuities, and other deferred gifts. In addition to the individuals listed below, **29 donors have informed the school of their intention to make deferred gifts to Dunwoody but prefer to remain anonymous.**

Sverre H. Ambjor, '38
 Robert, '68, and
 Sandra Anderson
 Sue A. Bennett
 Dr. M. James and
 Nancy R. Bensen
 Ann L. Bollmeier, '76, and
 George Lowing
 Fosten and Beverly Boyle
 Roger and Fay Bredesen
 Lowell E. Brown, '60
 Curtis, '69, and Jenelle
 Brumm
 Steve, '68, and
 Lynette Bryant
 Bob, '52, and Dodie Burdick
 Mrs. Robert W. Carlson, Sr.
 Robert W. Carlson, Jr.
 Alice Cassibo
 Keith, '39, and Dona Caswell
 Parker M. Congdon, '40
 Ronald W. Curtis, '59
 Julia Dang
 Harry M. Dye
 Merle R., '50, and
 Eunice Eggen
 Al Einberger, '78
 Joel A., '60, and
 Mary Ann Elftmann
 Helen T. Esala
 Harvey, '34, and
 Florence Felber
 Ted Ferrara, '77
*Standard Heating &
 Air Conditioning*

Todd Ferrara, '80
*Standard Heating &
 Air Conditioning*
 Sheldon E. Fox, '40
 Milton Halvorsen, '40
 Michael Hanson, '85
 Dale, '46, and Edna Hartman
 Ronald J. Henningsen, '63
 Evelyn Henry
 Larry H. Hjelle, '51
 James C. Holten, '68
 John T. '66, and
 Mary Jensen
 Edith Juul
 Dave Kalina, '70
 Chuck and Mary Kiester
 Jana King
 Roger J. Kohler, '66 & '86
 Jack R. Lake, '61
 John A., '48, and
 Shirley M. Markgren
 Frank D. McVay, '81
 Mattie Meagher and
 Donald Anderson, '50
 Vergil, '49, and Myra Neitzel
 Norwood Nelson, '60
 Dorothy K. O'Brien
 Otto C. Ohr, '41
 C. Howard Olsen, '37
 Bob, '75, and Mary Peck
 Hazel P. Perkins
 Alvin, '47, and
 Dorothy Petersen
 DeWayne Petersen, '65

Donald W., '47, and
 Joann Peterson
 Warren E. ^R and
 Arlene Phillips
 Arthur J. Popehn, '40
 Orville Rubow, '40
 Margaret Salay
 Paul F. Schmidt, '57
 Floyd H., '41, and
 Marge Schneeberg
 Frank E. Schochet, '35
 Becky S. S and
 Bob Seemann
 Ernest Skramstad, '38
 Frank R. and Lou Starke
 Fred L., '50, and
 Mary Jane Steinhilpert
 James, '55, and
 Elizabeth Swanson
 Donald B. Urquhart, '50
 Dr. and Mrs. John P. Walsh R
 Joseph C. Weis, '52
 Howard D. Wells, '71
 Marinus, '62, and
 Marjorie Westerham
 Marian Woehning
 Dr. C. Ben S and
 Donna Wright
 Alan E., '69, and
 Luanne F. Wussow
 Marvin, '70, and
 Dorothy Zweig



Dunwoody's new Recognition Hall highlights the Legacy Association, a membership comprised of special friends who have made provisions for Dunwoody students in their estate plans.

MEMORIALS

In memory of Harold A. Anderson

Peter A. Hansen, '65

In memory of Herb Bissell

Frank Starke^S
Dr. C. Ben Wright^S

In memory of Anthony Burtzel, '02

Sara Baker
Dennis Stenquist^S
Barbara Twedt

In memory of Douglas Clemens, '67

Becky Seemann^S
Mark Skipper^S
Frank Starke^S
Dr. C. Ben Wright^S

In memory of Donna Cooksey

Bob, '75, and Mary Peck

In memory of Joseph Craig, '39

Roberta E. Thorpe

In memory of George Doerr

Cynthia Case
Mark Davy
Katie Malone^S
Mary Pouch Meador^S
Becky Seemann^S
Mark Skipper^S
John G. Skogmo
Frank Starke^S
Wells Fargo Bank
Linda L. White
Phyllis H. Woodrich
Jane M. Wright

In memory of Alice Sophie Esby

Frank Starke^S
Dr. C. Ben Wright^S

In memory of Bishop Stanley N. Frazier

Al Jaedike, '74^S
Mark Skipper^S
Dr. C. Ben Wright^S

In memory of John Guptill, '37

Dolores M. Guptill

In memory of Gerald D. Gustafson

Geraldine Gustafson
Judith M. Gustafson
Leslie A. O'Brien
Janet K. Opdahl

In memory of John C. Hansen, Sr., '39

Jane LeMay^R
Warren E. Phillips^R
Lloyd W. Stevens, '45^R
Dr. C. Ben Wright^S

In memory of Joseph Hasbrouck, '62

Evelyn Hasbrouck

In memory of Charles Henderson

Olga T. Henderson

In memory of Raymond Hershey, '38

Dorothy Hershey
Irma H. Slocum

In memory of Leigh Hewitt, '46

Abby Hewitt

In memory of William Howard

Dana Daniels
Christine Howard
Ronald T. Kurtz
Wallace Sharp

In memory of Joseph Husby, '36

Mary K. Husby

In memory of Mary Husby

Dr. C. Ben Wright^S

In memory of Royal E. Hutchins, Jr.

Ruth A. Hutchins

In memory of Alfred J. "Bud" Iverson, '37

Fred J. Menger, '64

In memory of Tiny Johanneck, '53

Rafelene C. Johanneck

In memory of Arthur Jorgensen

Gay Jorgensen

In memory of Harriet and Emerson Keljik

Marilyn Marion^S
Frank Starke^S
Dr. C. Ben Wright^S

In memory of Elmer Langren

James A. Tilbury, '74

In memory of Gale Edward Libby

Lloyd W. Stevens, '45^R

In memory of Arnold Meleen, '34

Frank Starke^S

In memory of Joshua Moum, '01

Joseph D. DeLorme, '01

In memory of Donald Newstrom, '42

Frank Starke^S

In memory of Robert O'Brien, '54

Becky Seemann^S

In memory of Myron Olson, '33

Maxine W. Olson

In memory of Ronald K. Olson, '55

Elizabeth S. Olson

In memory of Robert H. Owens

Mary O. Neal

In memory of Walter Passe, '39

Caroline Passe

In memory of Howard Quesenberry, '39

Steven W. Peplinski, '71

In memory of George Rusnacko, '39

Dale T. Rusnacko

In memory of James Seivert

Helen Armstrong
Susan M. Biagini
Darlene Bild
Alice Bobick
Gordon Bond
Bonnie Cleveland
Helen Collova
Gregory Deeb
John T. Elstad
Judy L. Flaten
Debbie Henning
Jim Herring
Shirley Johnson
James G. Joseph
Joseph Kausner
Roger Krier
Colleen Millechek
Jim Moreland
Dolores J. Niewald
Cindy Pasiuk
Janet Pierson

Sharon Rebar
Catherine M. Scherman
John Sculley
Charlie Seivert
Chuck Seivert
Gary P. Seivert
Virginia E. Seivert
Beverly Swanson
Mike Theis
Frank M. Winiecki, '60
Marcel Zoch

In memory of Clarence H. Temte

Clarence W. Tempte

In memory of Robert G. Winter, '38

Lester E. Goetzke, '57

HONORARY GIFTS

In Honor of Bernard Gaffron

Counsel Financial, Inc.

In Honor of Mary Husby

Kari Hanson

In Honor of Dick and Debby McNeil

Ralph Bernstein
Samuel Leon
Rita Lusky
Joan Marks
Barbara Rummel



The Wenda W. and Cornell L. Moore Multi-Cultural Center was dedicated on December 4, 2006. Celebrating cultural diversity, the center supports Dunwoody's on-going diversity goal: "To create and sustain an environment that encourages and nurtures diversity at Dunwoody College of Technology."

Thank you



Dunwoody Academy, a new charter school sponsored by Dunwoody College of Technology, opened its doors on August 6, 2007. The Academy provides technical education to Twin Cities youth under the platforms of Manufacturing, Construction, Automotive and Health Care.

MATCHING GIFTS

- 3M Foundation
- ADC Foundation
- Alliant Techsystems, Inc.
- Boeing Gift Matching Program
- Cargill, Inc.
- Deluxe Corporation Foundation
- Ecolab Foundation
- General Mills Foundation
- General Motors Corporation
- Graco Foundation
- Hormel Foods Corporation
- IBM International Foundation (IIF)
- Medtronic Foundation
- Piper Jaffray & Company
- Securian Foundation
- Tennant Company Foundation
- The Toro Foundation
- Thomson West
- US Bank
- Wells Fargo Foundation
- Xcel Energy, Inc.

GIFTS IN-KIND

Gifts of Equipment, Supplies and Services

- Anonymous
- Affordable Automotive
- AJB Sales
- Henry Albrecht
- American Honda Motor Company
- American Spirit Graphics
- Appliance & TV Sales
- August Technology Corporation
- Baker Investments
- Banner Engineering Corp.
- Banta Digital
- John Beal
- Brown & Sharpe
- Carrier Corporation
- James Cavalier
- Chrysler LLC
- Colle + McVoy, Inc.
- Color Trek Inc.
- Comelex Supply
- Cool Air Mechanical
- Cornelius Company
- David Crosby
- DaimlerChrysler Donation Program
- DaimlerChrysler Training Center
- Dodge Dealer Advertising Association
- Dodge of Burnsville
- Duncan Company
- DuPont and Company
- DuPont Imaging Technologies
- Eaton Corporation
- Empirehouse, Inc.
- Scott Erickson
- John Esch
- Esko Graphics
- Trevor Fleck
- Ford Motor Company
- Training Center
- General Mills

- Gerbig Engineering
- Greenlee
- Guyers Builder Supply, Inc.
- Honeywell Commercial Training Center
- Hypro
- Johnson Controls, Inc.
- Keystone Automation
- Kodak Health Imaging
- Kodak Polychrome Graphics LLC
- James Lillehei
- Lofton Label, Inc.
- Mate Precision Tooling
- James McGowan
- Jeff McLeod
- Medina Electric, Inc.
- Metropolitan Mechanical Contractors, Inc.
- Midtown Manufacturing Co.
- NACS, Inc.
- Corey Nordwall
- North Anoka Control Systems
- Northwest Lasers, Inc.
- Packaging Systems Automation
- Par Systems
- PBE Specialists, LLC
- Polaroid Graphics Imaging
- Powermation
- PPG Industries
- Printware
- Productivity, Inc.
- Reynold Welding Supply
- Reynolds and Reynolds
- Ryan Companies USA, Inc.
- Ryt Way Industries, Inc.
- Siemens Energy & Automation, Inc.
- Smyth Companies, Inc.
- State Farm Insurance Company
- Subaru of America, Inc.
- Roger Swanson
- Technical Chemical Company
- Tetra Pak Carton Chilled, Inc.

- The Chrysler Foundation
- The Esco Institute
- The Instant Web Companies
- Tol-O-Matic, Inc.
- Toyota Motor Sales, U.S.A., Inc
- Turck, Inc.
- Walsler Toyota
- Weber Shandwick Worldwide
- Whirlpool Corporation
- White Castle Systems, Inc.
- Wynn's Petram Marketing, Inc.
- Yes Distributing, Inc.
- Srilata Zaheer
- Richard Zera
- Zero Zone Refrigeration

Thank you

*Business owned/operated by Dunwoody alumni ^S Current Dunwoody employees ^R Retired Dunwoody employees

Dunwoody College of Technology
STATEMENTS OF FINANCIAL POSITION
Years ended June 30, 2007 and 2006

ASSETS	2007	2006
CURRENT ASSETS		
Cash and Cash Equivalents	\$ 1,398,718	\$ 2,160,944
Accounts Receivable, Net of Allowance	1,049,829	966,161
Pledges Receivable, Current Portion	643,955	595,261
Prepaid Expenses	257,163	195,277
Total Current Assets	<u>3,349,665</u>	<u>3,917,643</u>
OTHER ASSETS		
Investments	26,899,030	24,253,062
Assets Held Under Split-Interest Agreements	10,893,596	10,462,845
Pledges Receivable, Net of Allowance and Current Portion	763,208	917,037
Total Other Assets	<u>38,555,834</u>	<u>35,632,944</u>
PROPERTY, PLANT, AND EQUIPMENT		
Land	828,504	828,504
Buildings and Improvements	25,548,275	21,345,698
Furniture, Fixtures, Machinery, and Equipment	14,855,820	12,148,785
Construction in Progress	720,526	4,168,358
Less: Accumulated Depreciation and Amortization	(26,225,475)	(23,547,021)
Net Property, Plant, and Equipment	<u>15,727,650</u>	<u>14,944,324</u>
Total Assets	<u>\$ 57,633,149</u>	<u>\$ 54,494,911</u>
 LIABILITIES AND NET ASSETS		
CURRENT LIABILITIES		
Line of Credit	\$ 8,350,000	\$ -
Note Payable	150,727	-
Current Maturities of Capital Leases	1,033,691	69,459
Current Amount of Deferred Revenue	196,701	121,987
Accrued Pension Liability	-	885,238
Accounts Payable	1,216,833	1,199,862
Accrued Compensation and Related Benefits	1,284,868	1,239,009
Total Current Liabilities	<u>12,232,820</u>	<u>3,515,555</u>
LONG-TERM LIABILITIES		
Long-Term Debt, Net of Current Maturities	-	7,600,000
Capital Leases, Net of Current Maturities	481,323	154,883
Charitable Remainder Trust Obligations	383,610	329,062
Annuity Obligations	213,931	231,178
Accrued Pension Liability, Net of Current Portion	1,581,493	379,316
Environmental Remediation	152,994	152,994
NEI Estimated Payable	152,306	152,306
Deferred Revenue, Net of Current Portion	1,852,651	1,974,635
Total Long-Term Liabilities	<u>4,818,308</u>	<u>10,974,374</u>
Total Liabilities	17,051,128	14,489,929
NET ASSETS		
Unrestricted:		
Undesignated	536,436	629,419
Board Designated	16,720,116	16,720,116
Total Unrestricted Net assets	<u>17,256,552</u>	<u>17,349,535</u>
Temporarily Restricted	11,193,919	10,904,907
Permanently Restricted	12,131,550	11,750,540
Total Net Assets	<u>40,582,021</u>	<u>40,004,982</u>
Total Liabilities and Net Assets	<u>\$ 57,633,149</u>	<u>\$ 54,494,911</u>

Dunwoody College of Technology

STATEMENTS OF ACTIVITIES

Years ended June 30, 2007 and 2006

	2007			2006	
	UNRESTRICTED	TEMPORARILY RESTRICTED	PERMANENTLY RESTRICTED	TOTAL	TOTAL
OPERATING REVENUE AND SUPPORT					
Tuition and Other Related Income	\$ 16,284,254	\$ -	\$ -	\$ 16,284,254	\$ 16,259,723
Gifts and Contributions	2,272,047	-	-	2,272,047	2,456,218
Investment Income at Spending Rate	1,382,425	-	-	1,382,425	1,288,460
Other	746,791	-	-	746,791	643,916
Total	20,685,517	-	-	20,685,517	20,648,317
Net Assets Released from Restrictions					
Satisfaction of Program and Other Restrictions	1,789,410	(1,789,410)	-	-	-
Total Operating Revenue and Support	22,474,927	(1,789,410)	-	20,685,517	20,648,317
OPERATING EXPENSES					
Student Programs	16,216,263	-	-	16,216,263	16,620,914
Academic Support	2,140,038	-	-	2,140,038	2,079,309
Management and General	4,879,685	-	-	4,879,685	4,100,901
Fundraising	341,652	-	-	341,652	233,563
Total Operating Expenses	23,577,638	-	-	23,577,638	23,034,687
Total Operating Expenses Over Operating Revenue and Support	(1,102,711)	(1,789,410)	-	(2,892,121)	(2,386,370)
OTHER NON-OPERATING ACTIVITY					
Investment Income Greater than Spending Rate	1,995,696	1,250,417	-	3,246,113	490,943
Change in Pension Liability Including Comprehensive Income	(316,939)	-	-	(316,939)	(102,255)
Gifts and Contributions	-	828,005	381,010	1,209,015	1,289,090
Total Other Non-Operating Activity	1,678,757	2,078,422	381,010	4,138,189	1,677,778
CHANGE IN NET ASSETS BEFORE CUMULATIVE EFFECT OF CHANGE IN ACCOUNTING PRINCIPLE					
	576,046	289,012	381,010	1,246,068	(708,592)
Cumulative Effect of Change in Accounting Principle Defined Benefit Plans (FASB 158)	(669,029)	-	-	(669,029)	-
Asset Retirement Obligations (FIN-47)	-	-	-	-	(152,994)
CHANGE IN NET ASSETS	(92,983)	289,012	381,010	577,039	(861,586)
Net Assets - Beginning	17,349,535	10,904,907	11,750,540	40,004,982	40,866,568
NET ASSETS - ENDING	<u>\$ 17,256,552</u>	<u>\$ 11,193,919</u>	<u>\$ 12,131,550</u>	<u>\$ 40,582,021</u>	<u>\$ 40,004,982</u>

BOARD OF TRUSTEES

OFFICERS

Andrea L. Newman

Board Chair
Senior Director, Service
Operations Development
Best Buy Company, Inc.

Gary N. Petersen

Board Vice Chair
President
Endres Processing

Jo Anne Anderson

Board Treasurer
Vice President, Uniprise
UnitedHealth Group

Craig T. Sulentic

Board Secretary
Egan Companies, Inc.

Bruce W. Engelsma

Immediate Past Board Chair
Chairman of the Board & CEO
Kraus-Anderson
Companies, Inc.

MEMBERS

Russell Becker

President/CEO
API Group, Inc.

Sue A. Bennett

Mental Health Clinician
Private Practice

Robert W. Carlson, Jr.

Chairman of the Board
Quadion Corporation

Rick D. Clevette

Vice President, Leadership &
Organizational Development
Carlson Companies, Inc.

Richard A. Copeland

President & Owner
Thor Construction, Inc.

Paul I. Cossette

Senior Vice President
M.A. Mortensen Company

David P. Crosby

Managing Director
Investment Banking
Piper Jaffray & Co.

Joel A. Eiftmann

President & CEO
Custom Fab Solutions

Theodore A. Ferrara

Chairman
Standard Heating and
Air Conditioning Company

James R. Fox

President
Metro Manufacturing, Inc.

Dolores H. Fridge

Chief Resolution Officer
Medtronic, Inc.

Michael J. Hanson

President/CEO
Hunt Electric Corporation

Barbara A. Jerich

Chief of Staff
Denny Hecker Automotive
Group, Inc.

Cornell L. Moore

Partner
Dorsey & Whitney, LLP

Raymond K. Newkirk

Chairman
Teamvantage Molding, Inc.

Tamara H. Olsen

Managing Officer
Gray, Plant, Mooty

Kay Phillips

President
ATEK and Acrometal
Companies

Talla Skogmo

Owner
Engler Skogmo Interior
Design

Loren L. Taylor

CEO
Pivotal Vision, LLC

Dr. Bernhard van Lengerich

Chief Science Officer
General Mills, Inc.

Maurice J. Wagener

President
Morrie's Automotive Group

John K. Woodworth

Senior Vice President
3M

Dr. C. Ben Wright

President
Dunwoody College of
Technology

HONORARY TRUSTEE

Richard F. McNamara

ALUMNI ASSOCIATION BOARD OF MANAGERS

OFFICERS

Paul Archambault

Board President
President
MTEC Electric, Inc.
1976 Electrical Construction

Larry Raasch

Board Vice President
Owner
Prime General Contractors
1977 Architectural Drafting &
Estimating

Chuck Bowen

Board Treasurer
Director of Transportation
Programs
Dunwoody College of
Technology
1966 Auto Electrical

Mark A. Skipper

Board Secretary
Vice President of
Development & Alumni
Relations
Dunwoody College of
Technology

Harlan Hallquist

Immediate Past President
Vice President of Marketing
JE Dunn Construction
1968 Architectural Drafting &
Estimating

MEMBERS

John Adamich

Owner/President
Dodge of Burnsville
1954 Automotive Service
Technology

Bob Bach

Senior Manufacturing
Engineer
St. Jude Medical
1977 Machine Tool
Technology

Paul Berman

Service Manager
Maplewood Imports
1982 Automotive Service
Technology

Emily Bollensen

1996 Automotive Service
Technology

J.J. Carboneau

Realtor
Counselor Realty, Inc.
1979 Electronic Systems
Technology

Steve Cunningham

Instructor
Dunwoody College of
Technology
1994 Automotive Service
Technology

Al Einberger

1978 Air Conditioning

Mark Falconer

President
Minneapolis Oxygen Co.
1968 Welding

Theodore A. Ferrara

Chairman
Standard Heating and
Air Conditioning Company
1977 Refrigeration

James Frisell

Vice President
McGough Companies
1975 Architectural Drafting &
Estimating

Ann Harty

Sales
Rapid Packaging
2002 Automation Packaging

Derick Haug

Senior Developer Analyst
Tech-Com, Inc.
1998 NEI Information
Management

Jeff Hawthorne

Industrial Controls Manager
Egan Companies, Inc.
1989 Electrical Construction

Tim Hayes

President
LBP Mechanical, Inc.
1977 Pipe Fitters

LaMont Herman

Vice President
Hunt Electric Corporation
1983 Electrical Construction

Mark Jessen

President
Jessen Press

Jennifer Larson

1997 Architectural Drafting &
Estimating

Gerald Leukam

Senior Vice President
T.E. Ibberson Company
1975 Architectural Drafting &
Estimating

William MacPherson

Vice President of Group
Property Management
Wells Fargo Co.
1976 Architectural Drafting &
Estimating

Bridget Murphy

Senior Instructor
Dunwoody College of
Technology
2000 Architectural Drafting &
Estimating

Doug Olson

President
Premier Electrical Corporation
1968 Electrical Construction

Joe O'Shaughnessy

Vice President/Partner
Horwitz, Inc.
1981 Air Conditioning

Bob Prell

McGough Companies
Southwest, Inc.
1976 Architectural Drafting &
Estimating

Steve Robinson

1960 Auto Electrical

Vicki Sandberg

Director of Employment
Services
MN Mechanical Contractors
Association

Mike Stillman

President
Doody Mechanical
1978 Air Conditioning

Robert Strom

President
Olson Tool & Plastics
1963 Machine Tool
Technology

Christopher Swingley

Project Manager
Swanson & Youngdale, Inc.
1981 Architectural Drafting &
Estimating

Gib Syverson

Owner
Syverson Drywall, Inc.
1974 Automotive Service
Technology

Cedric Thompson

Sales Representative
Goodin Company
1999 Heating, Ventilation and
Air Conditioning

Jim Tilbury

President
Nedmac, Inc.
1974 Electrical Construction

Dr. C. Ben Wright

President
Dunwoody College of
Technology

Donald Zoubek

Owner
Automated EDM, Inc.
1986 Machine Tool
Technology

HONORARY ALUMNI BOARD MEMBERS

Warren E. Phillips

Robert E. Poupore

Frank Starke

LEADERSHIP TEAM

Dr. C. Ben Wright

President

Robert A. Doty

Senior Vice President & CFO

Patricia A. Edman

Director of Human Resources

Dave Jarzyna

Director of Marketing &
Communications

Mark A. Skipper

Vice President of
Development & Alumni
Relations

Dr. Richard J. Wagner

Vice President of Academic
Affairs

Jeffrey M. Ylinen

Dean of Learning



Ways to Give

Over 85% of Dunwoody students receive some type of financial assistance. Dunwoody is able to subsidize part of the tuition and offer financial aid to students because of contributors like you. Philanthropy takes all types. Below are just some of the ways to make a gift to the college. For additional information on how you can make a difference in the education of Dunwoody students, contact the Office of Development and Alumni Relations at: (612) 381-3064 or visit www.dunwoody.edu/donate.

ANNUAL FUND

Contributions to Dunwoody's Annual Fund make it possible to subsidize student tuition by keeping operational costs as low as possible. Annual Fund gifts can now be made through automatic withdrawal, check, credit card payment or via the Web. Dunwoody also encourages those who have matching gift programs through their companies to take advantage of those programs. Contact Mary Meador at (612) 381-3048.

CAPITAL GIFTS

Dunwoody is in the midst of its \$30 million *Good to Great* Campaign. Gifts made to the campaign help to maintain and create new facilities to provide Dunwoody students with a best-in-class learning environment. The college also has been awarded a challenge grant from the Bush Foundation that promises to match up to \$550,000 on all gifts from alumni and individuals of \$50 to \$250,000 made by June 30, 2008. These monies will go toward capital improvements, endowed scholarships, and new construction projects on campus. For specifics on Dunwoody's *Good to Great* Campaign and the Bush Foundation challenge match, contact Mark Skipper at (612) 381-3054.

ANNUAL FUND GIVING CLUB LEVELS

MASTER BUILDERS CLUB
\$10,000 +

CHARLES A. PROSSER CLUB
\$5,000 - \$9,999

JOHN BUTLER CLUB
\$2,500 - \$4,999

WILLIAM AND KATE
DUNWOODY CLUB
\$1,000 - \$2,499

PRESIDENT'S CLUB
\$500 - \$999

CENTURY-PLUS CLUB
\$250 - \$499

CENTURY CLUB
\$100 - \$249

INDIVIDUAL SPONSOR
up to \$99

SCHOLARSHIPS

Dunwoody scholarship contributions can be made in a variety of ways, whether it be to Dunwoody's General Scholarship Fund or to an Endowed Scholarship in the name of a loved one. Dunwoody scholarships are offered in many different varieties, including program-specific, need-based, merit-based, and organization affiliations. Dunwoody students are grateful for the scholarship support they receive to pursue their Dunwoody education. Contact Randy Sims (612) 381-3053.

ALUMNI AND FRIENDS BRICK CAMPAIGN

Preserve your spot in Dunwoody's history by placing a brick order today. Your brick will be displayed in Dunwoody's new Alumni and Friends Walkway outside the Carlson Commons entrance. The Alumni and Friends Brick Campaign efforts are being led by Automotive alumnus Gib Syverson. Contributions to the Campaign go to support Dunwoody's capital initiatives. To place your brick order, visit www.dunwoody.edu/donate or contact John Chandler at (612) 381-3061.

WILLS AND ESTATE PLANS

Dunwoody is proud to have over 100 current members of the Dunwoody Legacy Association, made up of alumni and friends who have made provisions in their wills or estate plans for the college. Your will is more than just a legal document. It reflects your personal values, love and concern for family, friends, and your community. One way to show your love and concern for others is to include a bequest to charitable institutions such as Dunwoody. A bequest can be a lasting memorial to your values and will make a difference in future generations of Dunwoody students. Contact Becky Seemann at (612) 381-3057 for additional information.

The Compass is published and distributed by Dunwoody's Office of Development and Alumni Relations during the winter, spring and summer months for alumni and friends of the college. Comments and suggestions are welcome and should be addressed to:

Office of Development and Alumni Relations
818 Dunwoody Boulevard
Minneapolis, MN 55403
(612) 381-3064

General Information: (612) 374-5800

www.dunwoody.edu

Dr. C. Ben Wright, President

© 2007 Dunwoody College of Technology



818 Dunwoody Boulevard
Minneapolis, MN 55403

CHANGE SERVICE REQUESTED

Non-Profit
Organization
U.S. Postage
PAID
Minneapolis, MN
Permit No. 3726

"To provide for all time a place where youth without distinction on account of race, color or religious prejudice, may learn the useful trades and crafts, and thereby fit themselves for the better performance of life's duties."

WILLIAM HOOD DUNWOODY

