



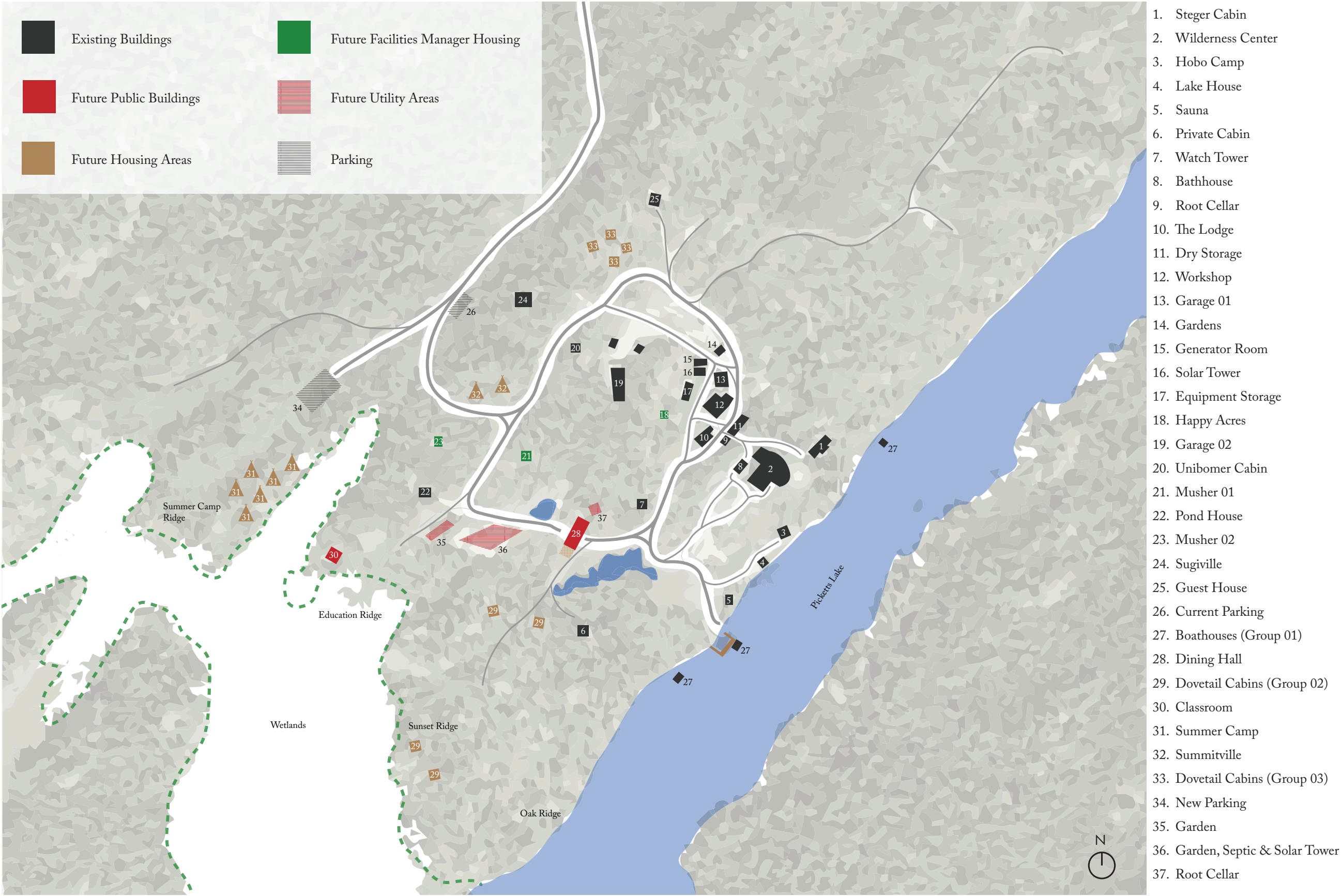
Dining Wild 2017

a Will Steger - Dunwoody Collaboration

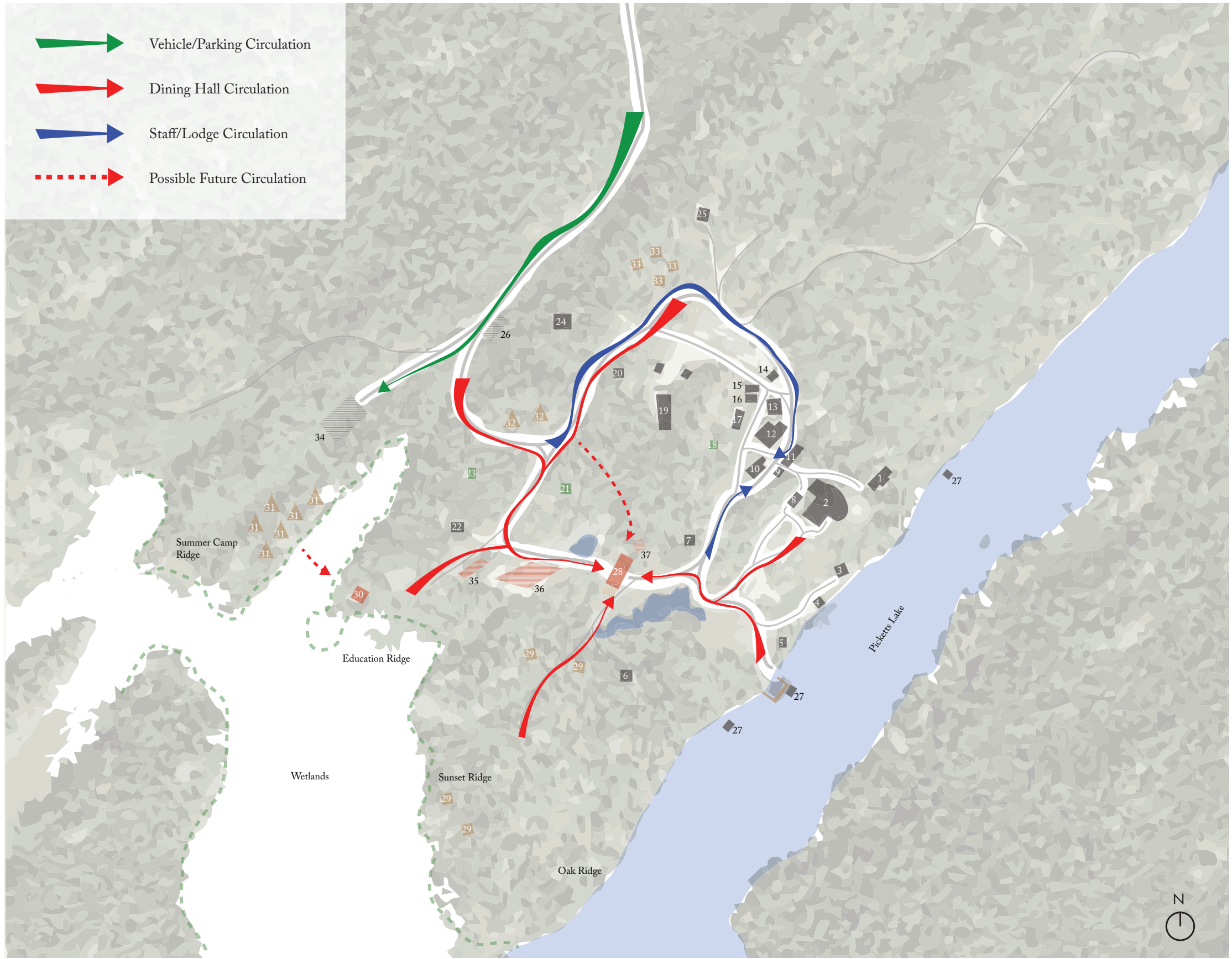
TABLE OF CONTENTS

SITE PLANS	4
ODALIS ANDRADE, MEGAN BURR, SAM LASUSA, DEVYN SMOTER	
DESIGN DEVELOPMENT	12
ROBERT BACON, ADAM BOOTH, SAMANTHA CHRISTNER, NICK RAMSINGH	
SPECIFICATIONS	24
ODALIS ANDRADE, MEGAN BURR, SAM LASUSA, DEVYN SMOTER	
MODELS	26
JAKE LARSON, LAURA STENE, NICK SCHURHAMMER, CHRIS EKLUND	
DETAILS	42
JAKE LARSON, LAURA STENE, NICK SCHURHAMMER, CHRIS EKLUND	
RENDERS	44
ROBERT BACON, ADAM BOOTH, SAMANTHA CHRISTNER, NICK RAMSINGH	

MACRO SITE PLAN



MACRO CIRCULATION

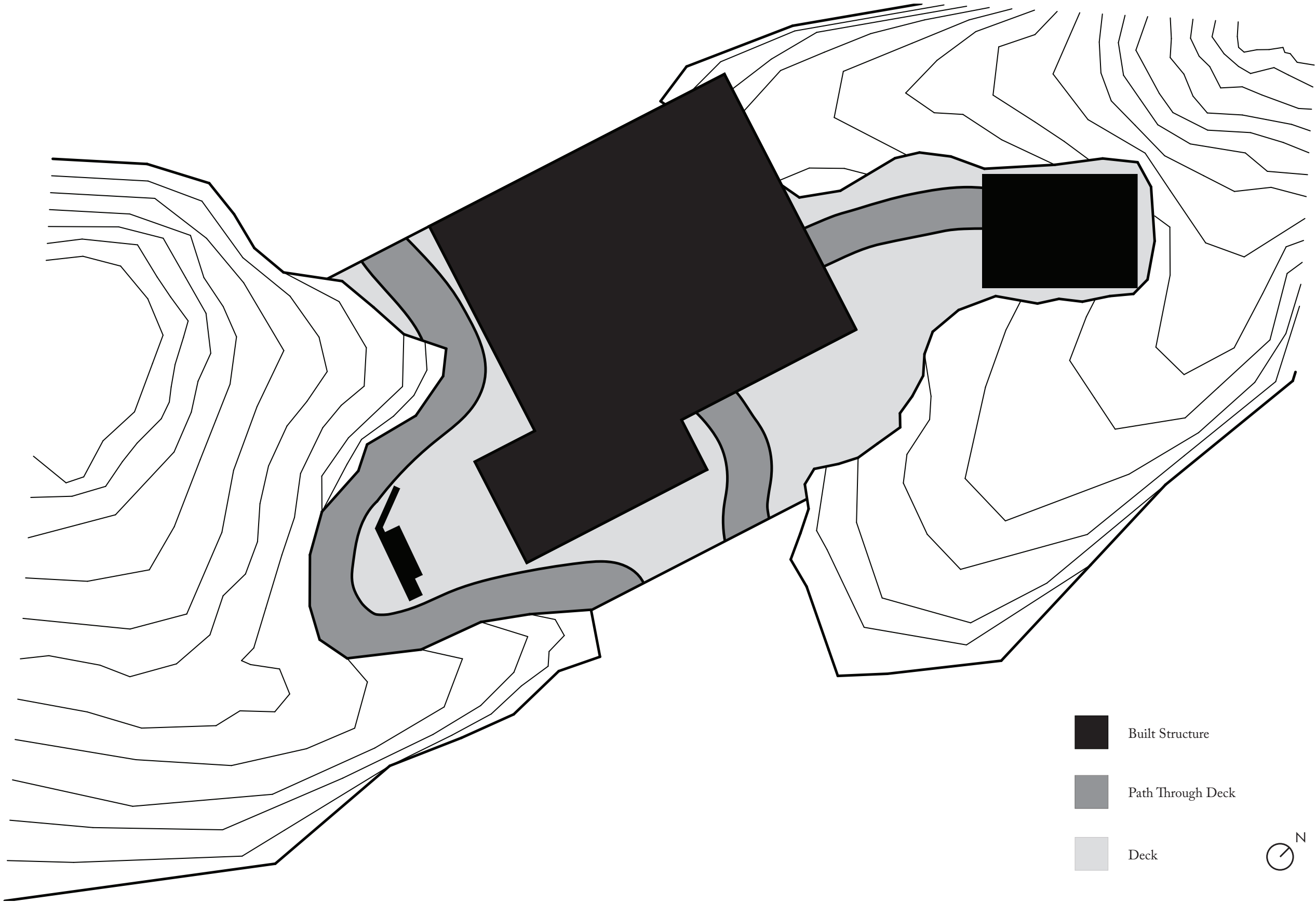


- 1. Steger Cabin
- 2. Wilderness Center
- 3. Hobo Camp
- 4. Lake House
- 5. Sauna
- 6. Private Cabin
- 7. Watch Tower
- 8. Bathhouse
- 9. Root Cellar
- 10. The Lodge
- 11. Dry Storage
- 12. Workshop
- 13. Garage 01
- 14. Gardens
- 15. Generator Room
- 16. Solar Tower
- 17. Equipment Storage
- 18. Happy Acres
- 19. Garage 02
- 20. Unibomer Cabin
- 21. Musher 01
- 22. Pond House
- 23. Musher 02
- 24. Sugiville
- 25. Guest House
- 26. Current Parking
- 27. Boathouses (Group 01)
- 28. Dining Hall
- 29. Dovetail Cabins (Group 02)
- 30. Classroom
- 31. Summer Camp
- 32. Summitville
- 33. Dovetail Cabins (Group 03)
- 34. New Parking
- 35. Garden
- 36. Garden, Septic & Solar Tower
- 37. Root Cellar

SITE DEVELOPMENT

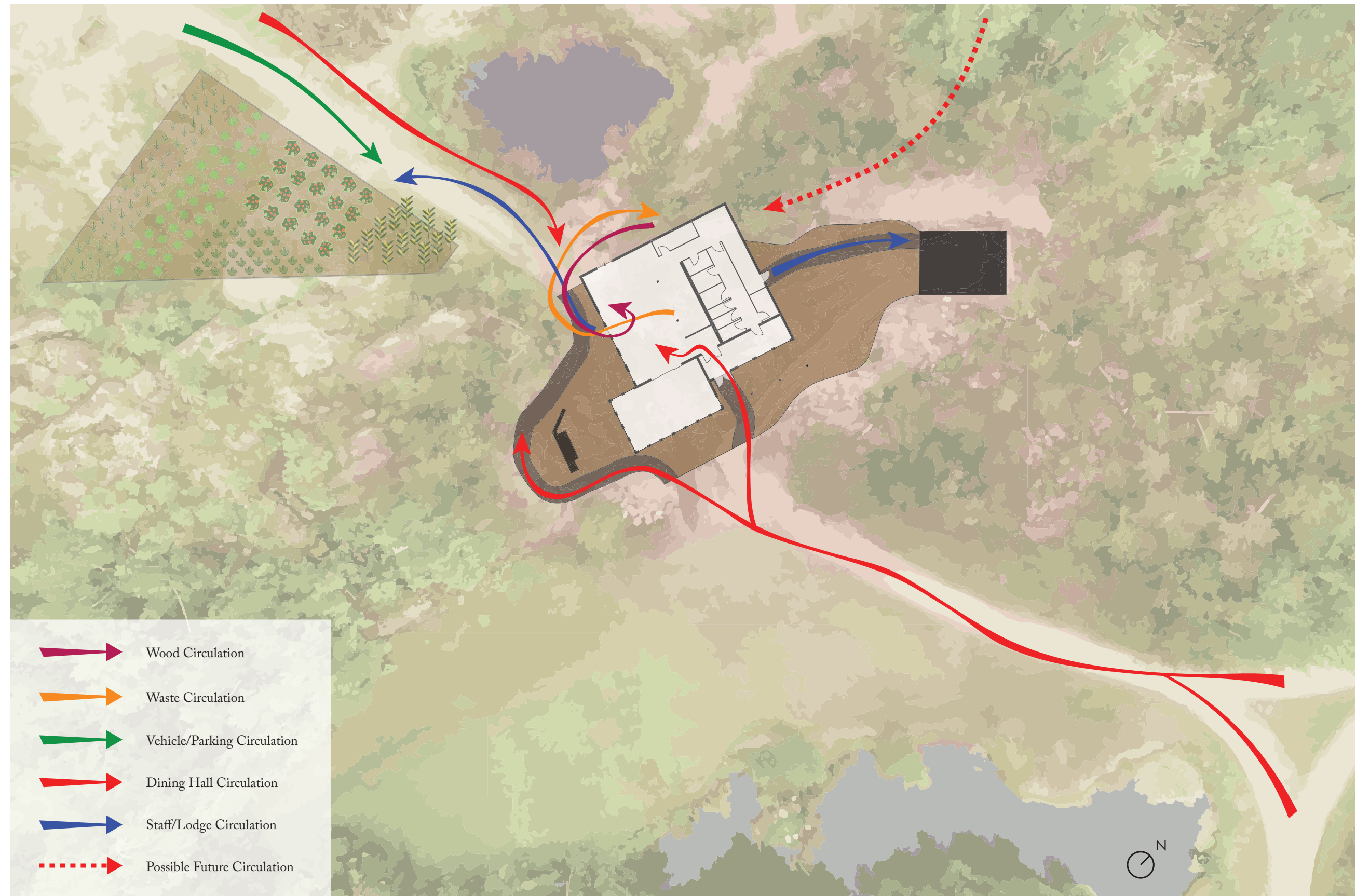


- A:** Old site, Fall of 2016
A site between two ridges was selected for the future dining hall.
- B:** New site, Fall of 2017
The site was excavated to explore site conditions.
- C:** Future site
An area of the right, back ridge will be blown out to expand the dining hall site.
(Site for the proposed dining hall.)



MICRO SITE PLAN







MODELS AND DETAILS

Jake Larson, Laura Stene, Nick Schurhammer, Chris Eklund

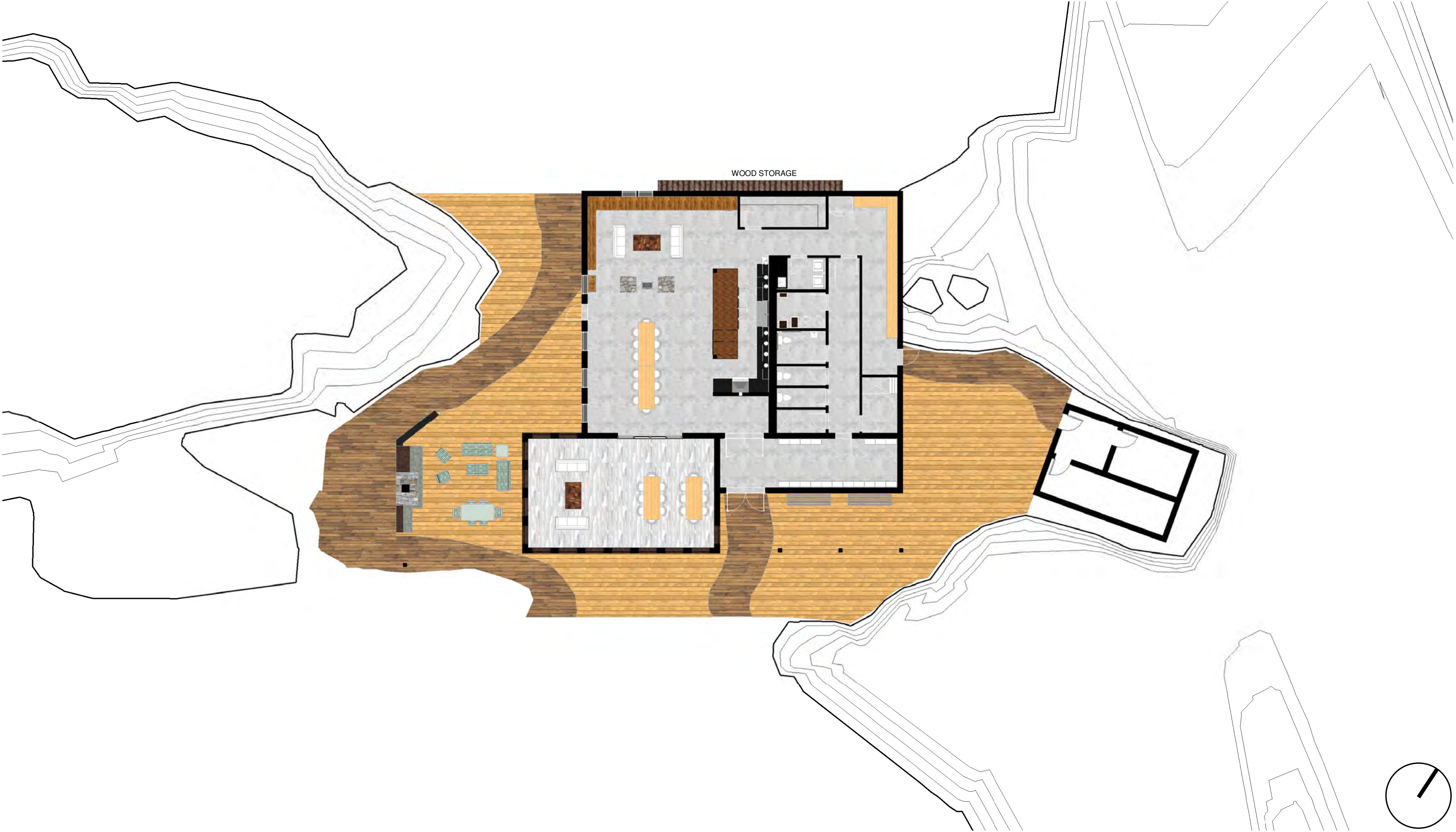
Site and Section Model
Wall and Roof Model
Wall Storage Model
Wall, Door, and Window Detail

DRAWING AND RENDERINGS

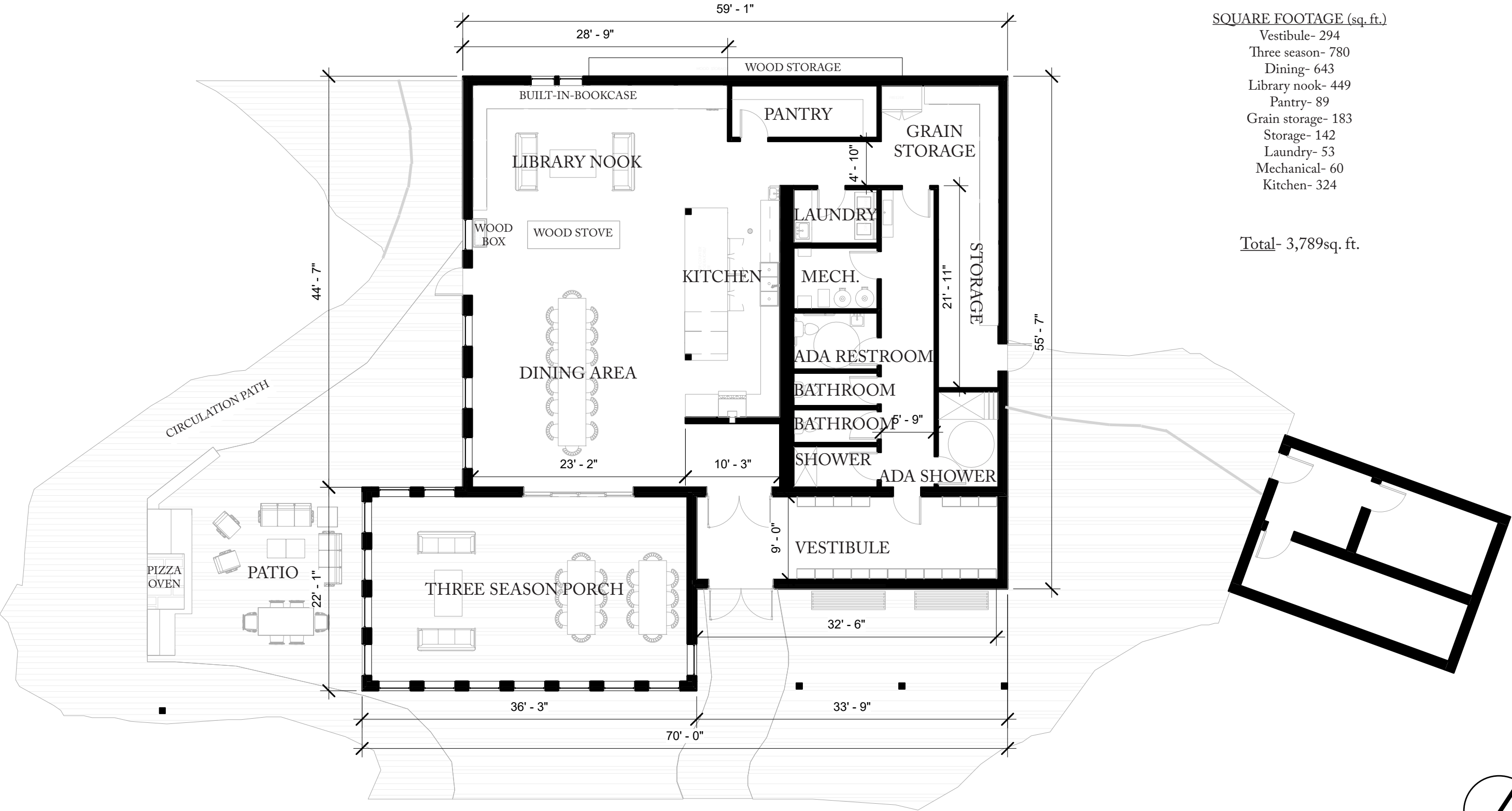
Robbie Bacon, Adam Booth, Samantha Christner, and Nick Ramsingh

Interior Elevations and renderings, exterior elevations and renderings, building plans, and building sections

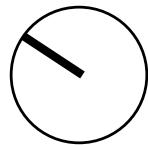
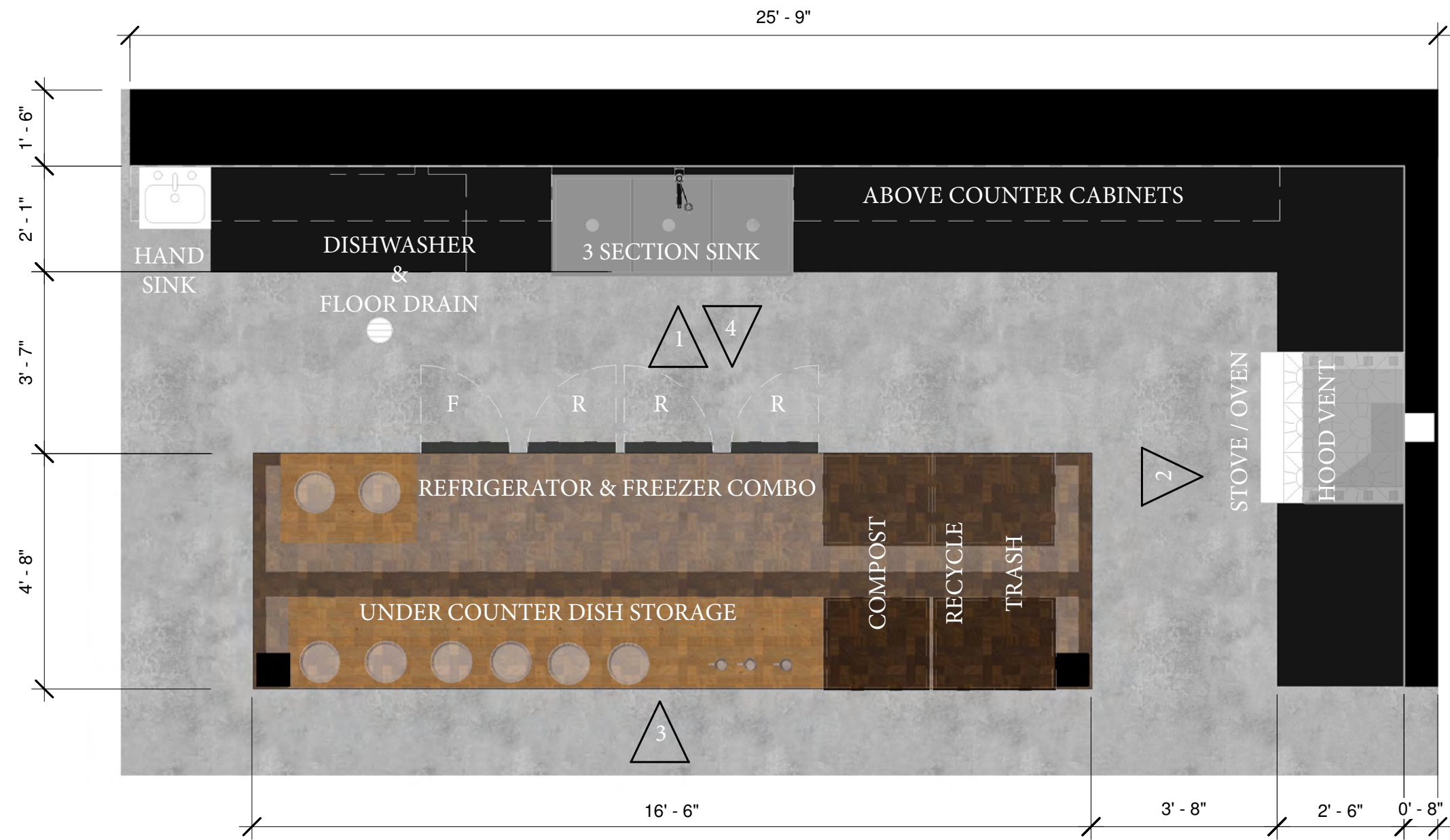
COLORED FLOOR PLAN



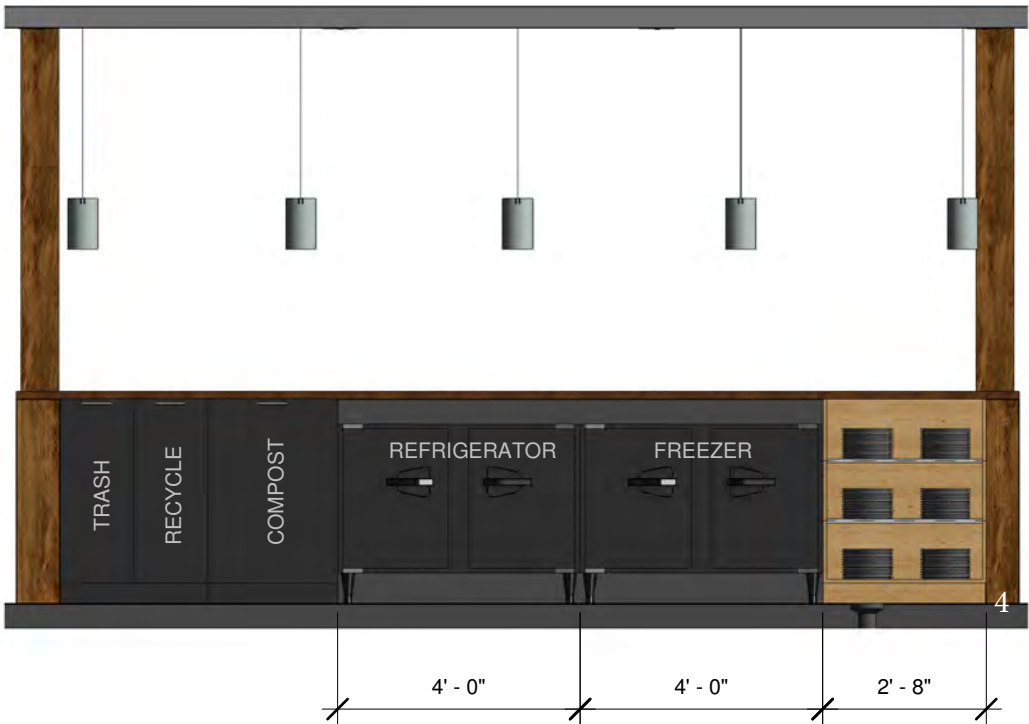
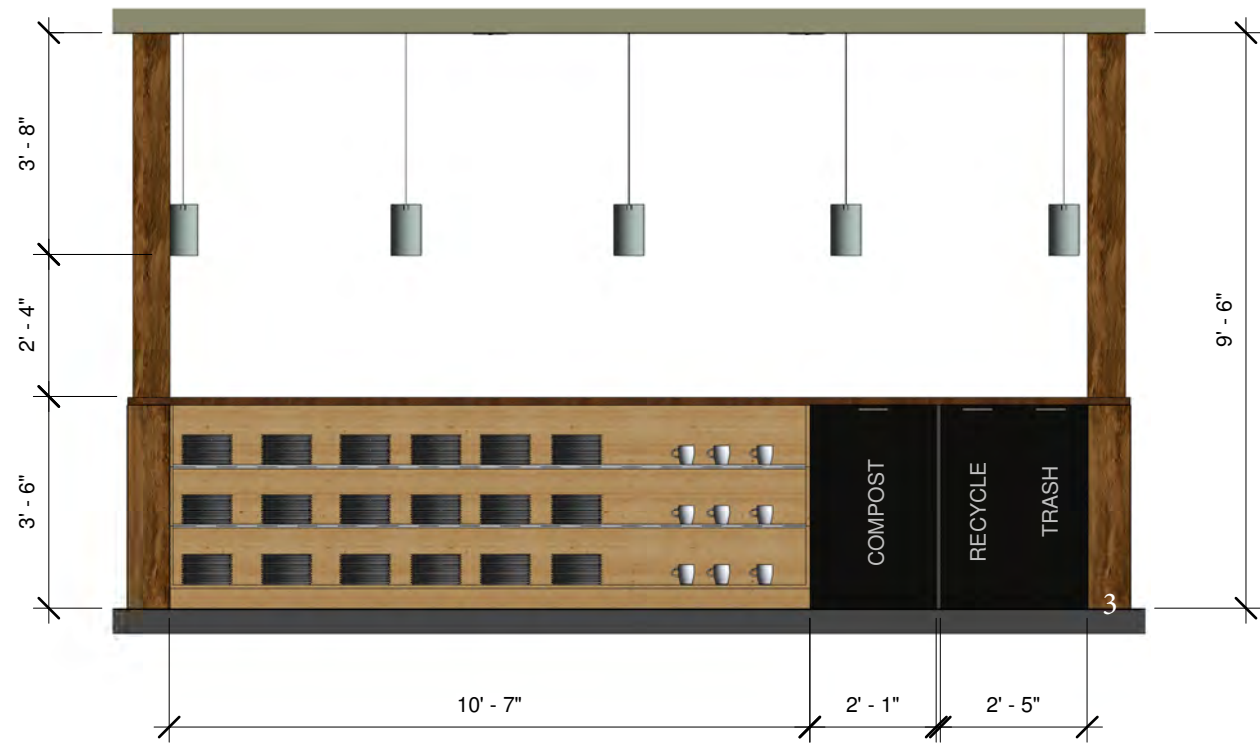
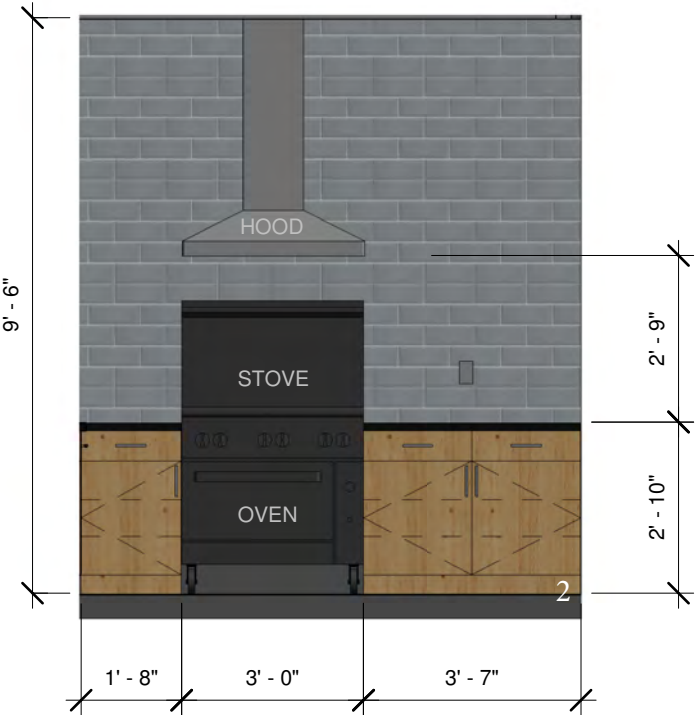
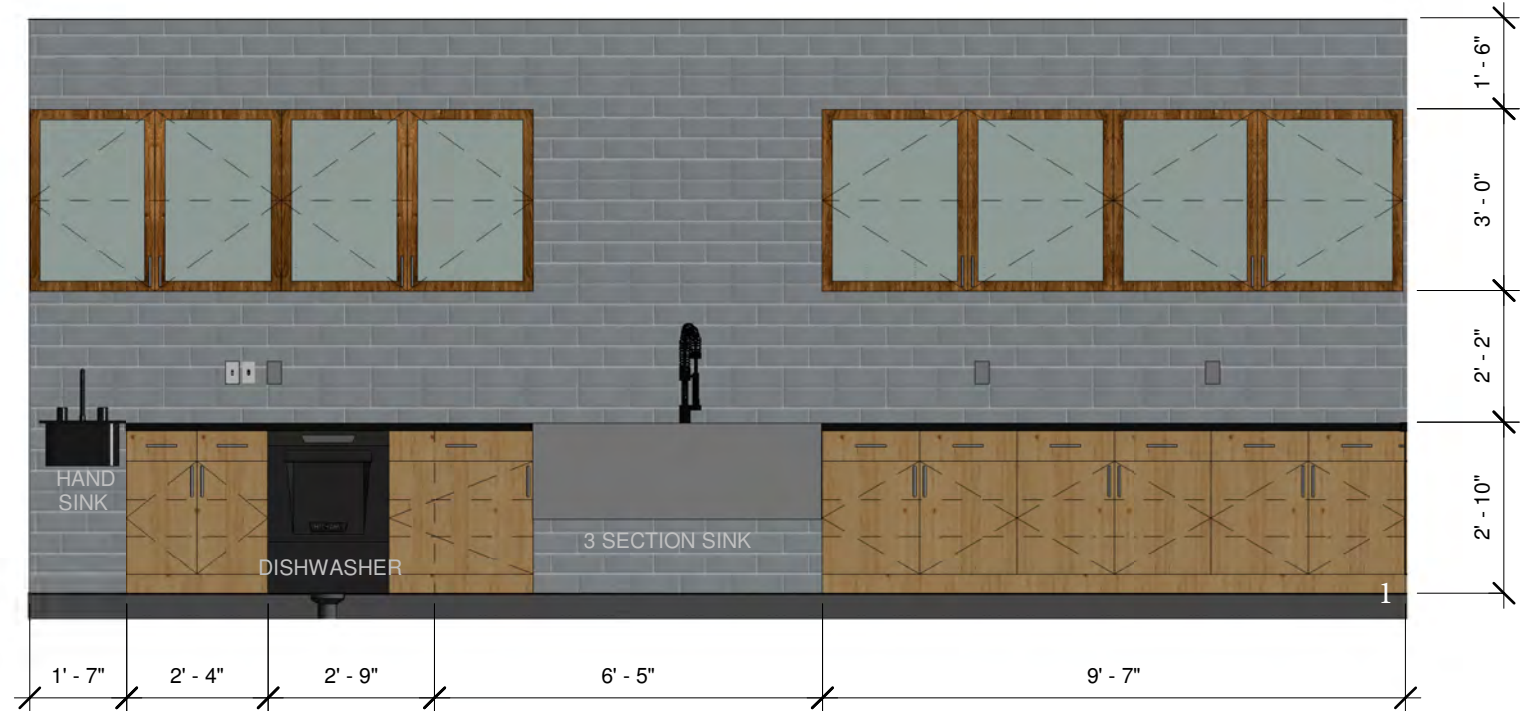
TECHNICAL FLOOR PLAN



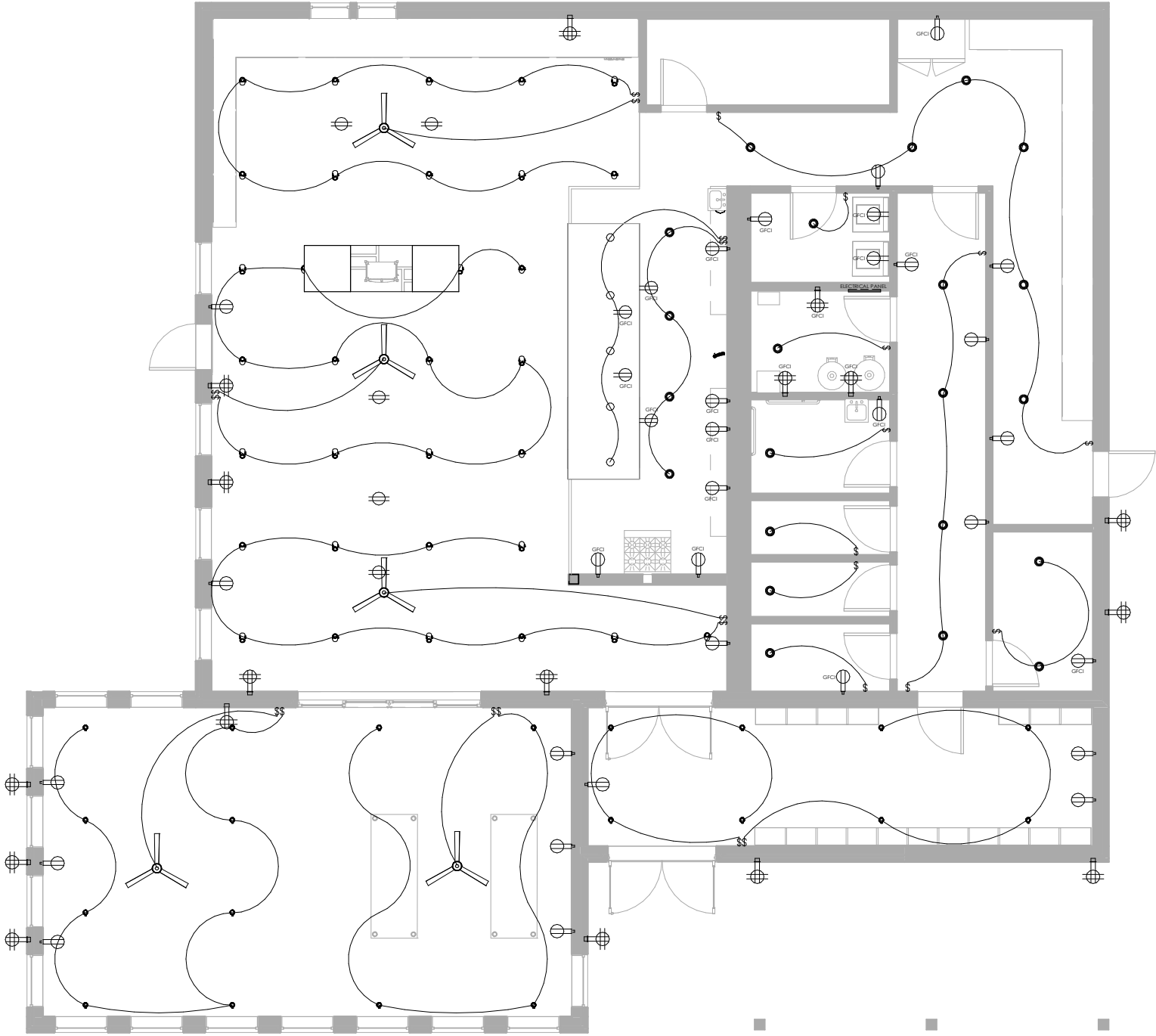
KITCHEN DETAIL PLAN



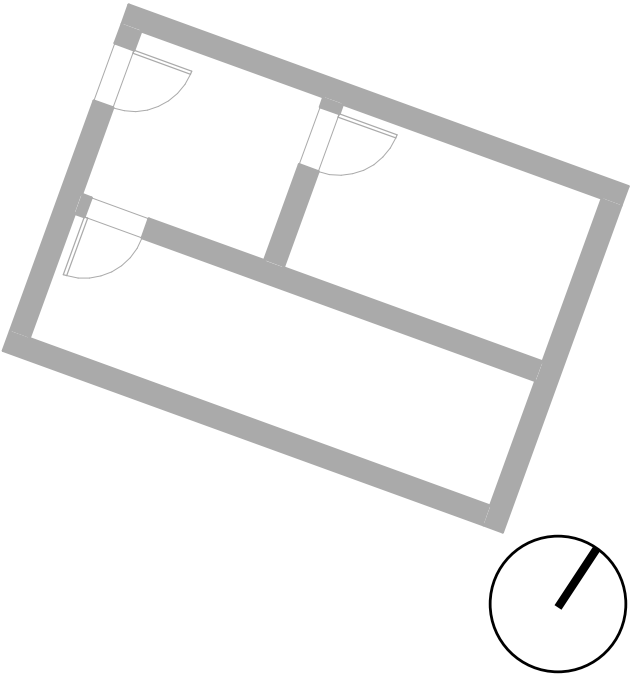
INTERIOR ELEVATIONS OF KITCHEN



ELECTRICAL PLAN



KEY	
	DUEL WALL OUTLET
	DUEL FLOOR OUTLET
	QUAD WALL OUTLET
	SINGLE LIGHT SWITCH
	DOUBLE LIGHT SWITCH
	ELECTRICAL PANEL
	ELECTRICAL WIRING
	A GROUND FAULT CIRCUIT INTERPRETER
	CANNED LIGHTS
	PEDANT LIGHTS
	TRACK LIGHTS
	CEILING FAN



□



NORTH TO SOUTH SECTION



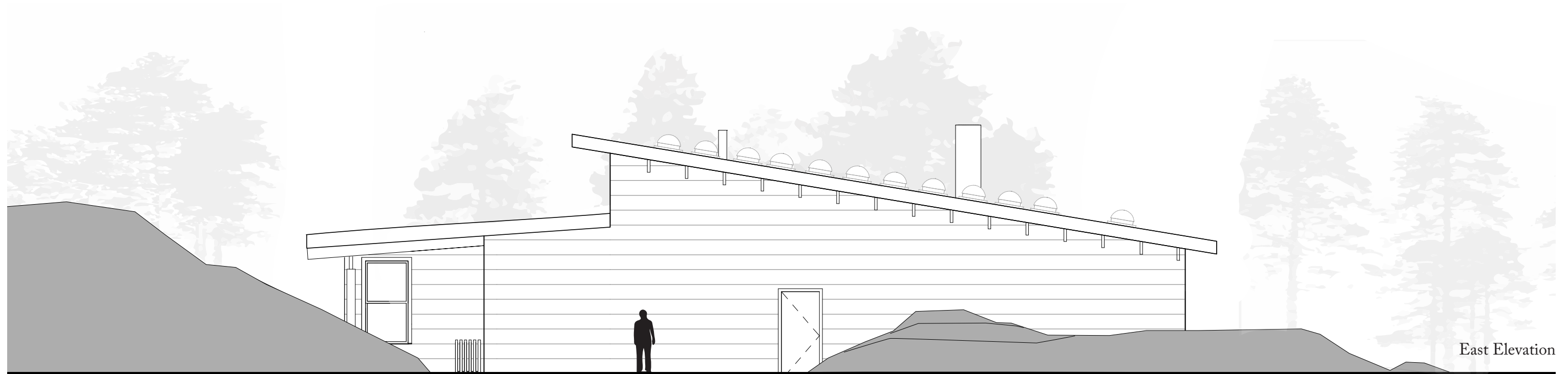




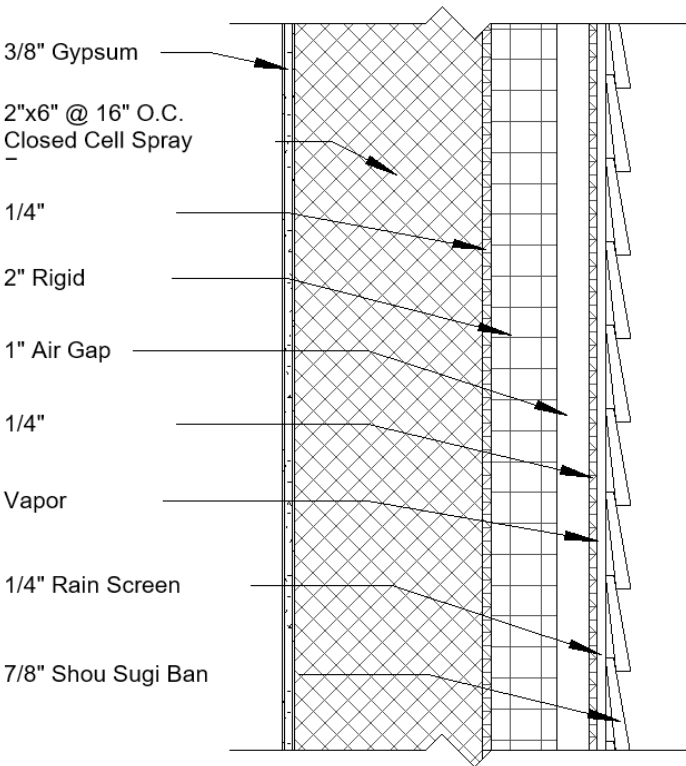


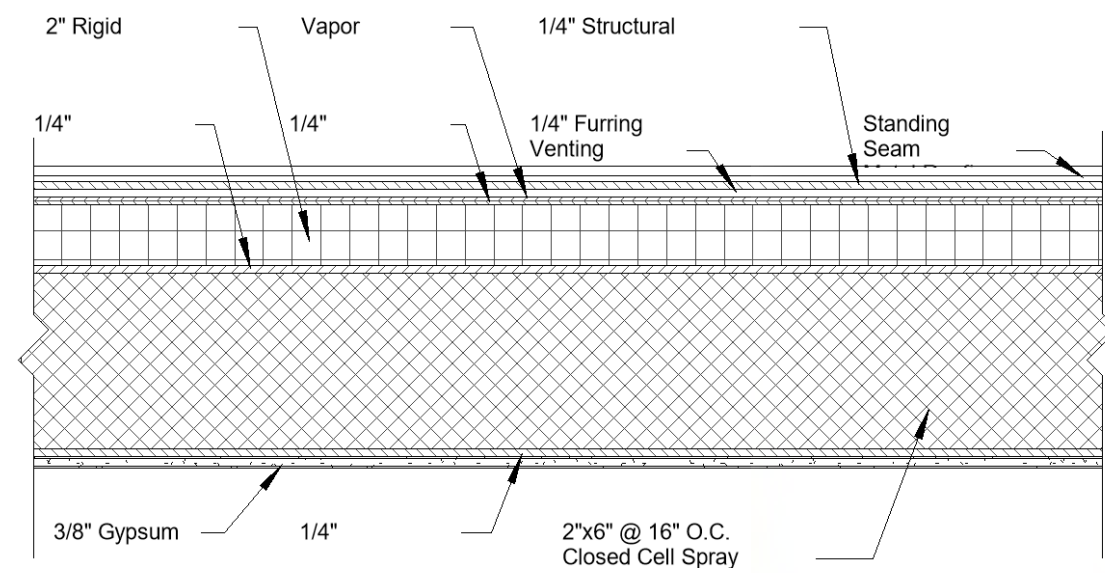
EXTERIOR ELEVATIONS





WALL SECTION MODEL



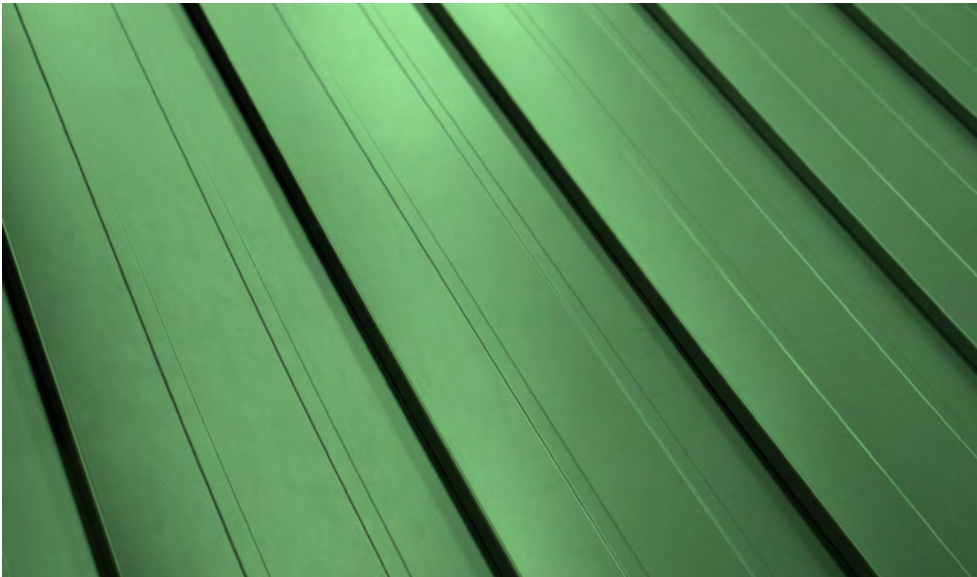


SPECIFICATIONS

Odalis Andrade, Megan Bur, Sam LaSusa, Devyn Smoter

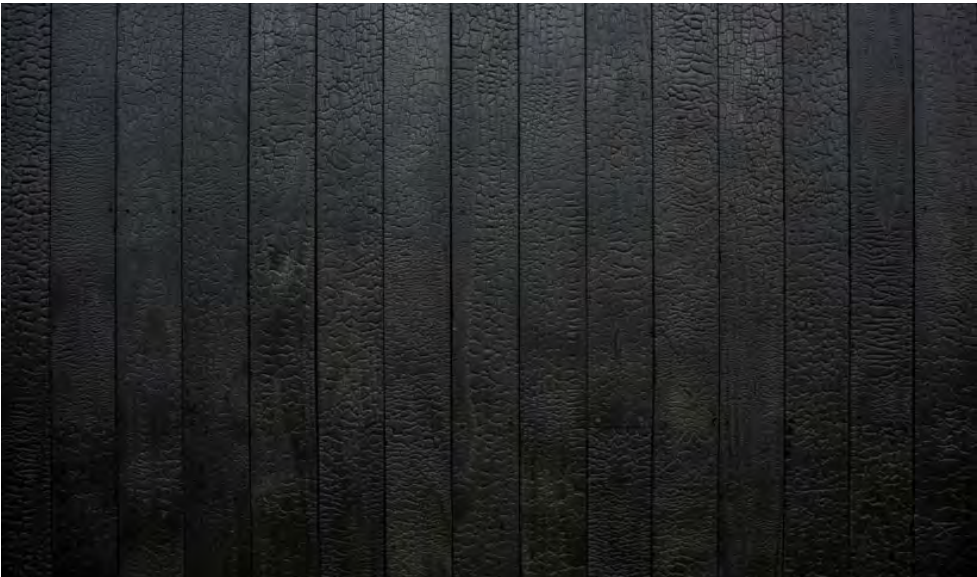
- Material Palette Specification*
- Appliance Specification*
- Fixture Specification*
- Specifications Matrix*

EXTERIOR MATERIALS



Tite-LOC Panel (Standing Seam Metal Roof)

PAC-CLAD Peterson is a LEED certified metals service industry that manufactures standing seam roof panels. The company provides a wide range of colors and their products are composed of recycled materials.



Shou-Sugi-Ban (Exterior Cladding)

Shou-Sugi-Ban is an ancient Japanese exterior cladding technique. The wood is preserved naturally through the process of charring, cooling, cleaning, and finishing the wood with natural oil.



Ely Greenstone (Exterior Cladding)

The exterior will include the ely greenstone collected from Will's quarry. The stone cladding will highlight the natural landscape of the area.



Raw Wood (Decking)

The natural wood is the general decking material. The lumber will be harvested from the surrounding forest and from Will's lumber yard.



Dark Wood (Deck Path)

The dark wood is the decking material that highlights the pedestrian walkway. The lumber will be harvested from the surrounding forest and from Will's lumber yard.



Dark Wood (Exterior Columns)

The exterior columns will have a matching dark wood stain to match the shou-sugi-ban of the dining hall siding. The lumber will be harvested from Will's lumber yard or the surrounding forest. The columns will be stained using Penofin Verde.



Exposed Wood (Beams & Structure)

The exposed beams and structure will provide a contrast to white walls. The natural wood exposure will highlight the resources in the area. The lumber will be harvested from Will's lumber yard or the surrounding forest. The interior structure will be stained using Penofin Verde.



Behr Premium Plus (Wall Paint)

Behr is available at most hardware stores. The premium plus series is low odor, zero VOC, and is greenguard gold certified.



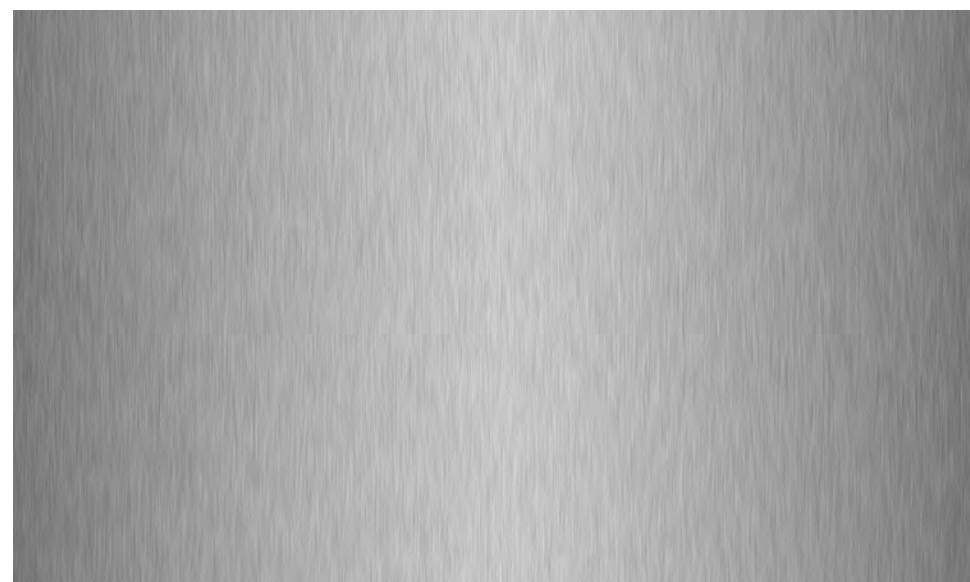
Polished Concrete (Flooring)

Summit Academy will pour and finish the polished concrete. Polished concrete floors are durable, easy-to-clean, and low maintenance.



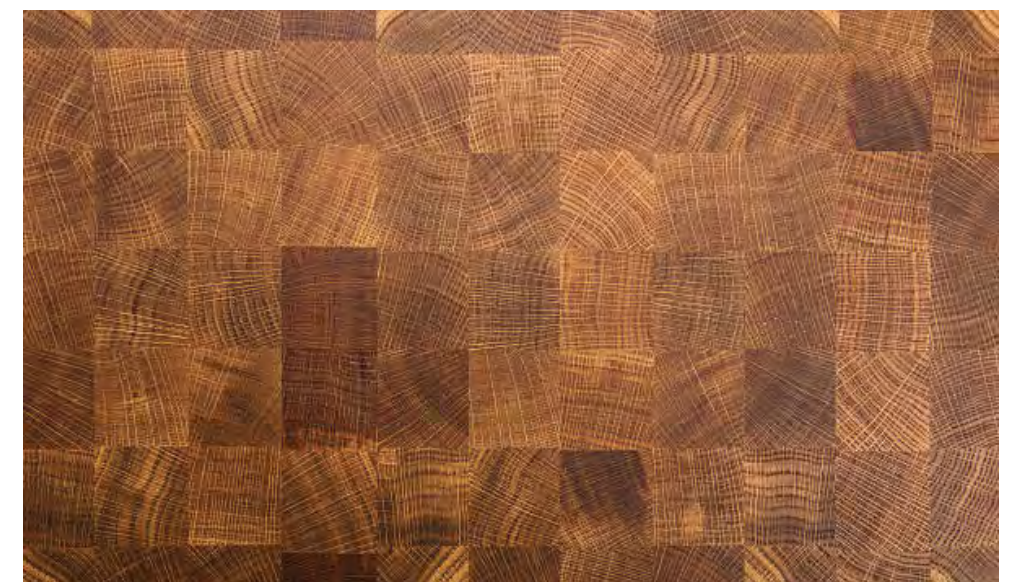
Verde Environmental Wood Stain (Cabinet Stain)

It's an environmentally friendly stain that can be applied to interior and exterior woods. The stain is a U.S. Green Building Council Member Product, made of Brazilian rosewood oil. The protect contains no odor, no petroleum distillates, VOC less than 1g/liter and has 99% UV protection.



Stainless Steel (Kitchen Countertop)

The stainless steel countertops are easy to maintain and clean. Stainless steel is water, stain and heat resistant. The stainless steel creates a hygienic surface for preparing meals in a commercial kitchen.



End-grain Butcher Block (Island Butcher Block)

End grain butcher block is a durable countertop that matches the natural aesthetics of the dining hall. It celebrates the resources of the surrounding forest and naturally absorbs the knife's edge without dulling it. The lumber wood be collected from Will's lumber yard or the surrounding forest.

INTERIOR MATERIALS



Festiva (Kitchen Backsplash)

The grey tile from Daltile is manufactured sustainably using post industrial materials. The grey compliments the stainless steel, wood, and white walls used in the kitchen.



Raw Wood (Base) & Medium Wood (Uppers) (Kitchen Cabinets)

The lower cabinets would be a lighter, raw wood. The upper cabinets would be a darker, stained wood. Will would use his lumber for the cabinets and the Penofin Verde would be the stain for the upper cabinets.



European Railing Bar Cabinet Pull (Cabinet Handles)

The cabinet pulls are a simple, clean design. The pulls are affordable and easily available at a variety of hardware stores.



Modern Dimensions™ (Bathroom Wall Tile)

The white tile from Daltile is manufactured sustainably using post industrial materials.

MECHANICAL EQUIPMENT



Name (Brand): Expansion Tank for Well (AMTROL)
Size: TBD by Craig Tarr
Location: Mechanical
Quantity: 1
Details: Strongest tank design featuring deep drawn steel and multi-dome construction; Thickest diaphragm made of heavy duty butyl;



Name (Brand): Wall-mounted Boiler (HTP)
Size: TBD by Craig Tarr
Location: Mechanical
Quantity: 1
Details: 316 L stainless steel fire tube heat exchanger with a 96% AFUE rating; Energy Star approved; Adaptable to fit installation requirements



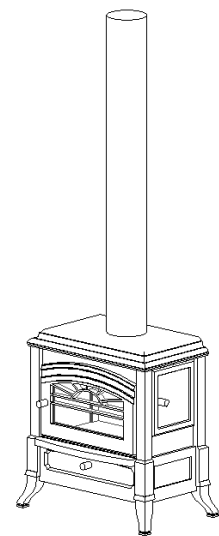
Name (Brand): Storage Tank for Boiler (HTP)
Size: TBD by Craig Tarr
Location: Mechanical
Quantity: 1
Details: Durable and long lasting product; NSF certified; High quality steel resists corrosion; 2" layer of environmentally safe insulation



Name (Brand): Water Softener (GE)
Size: 15" W x 23" D x 48" H
Location: Mechanical
Quantity: 1
Details: NSF certified; Self-cleaning sediment filter protects plumbing; Compact size; Reduces chlorine taste and odor



Name (Brand): Sump Basin in Kitchen (PRO SERIES PUMPS)
Size: 8" D x 14" H
Location: Kitchen
Quantity: 1
Details: Energy star approved; Energy efficient motor; Approved by the CSA



Name (Brand): Wood Stove (LAMPPA MANUFACTURING INC.)
Size: TBD
Location: Dining Hall
Quantity: 1
Details: Clean and economical fuel; Holds heat well; Vapor-Fire 100 Furnaces are currently the only wood furnace that's EPA Phase 2 certified

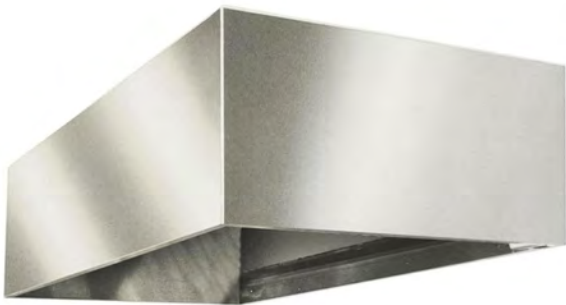
APPLIANCES



Name (Brand): Stacked Washer/Dryer (GE)
Size: 27" W x 31" D x 76" H
Location: Laundry
Quantity: 2
Details: Accommodates large loads; Cycle status lights; Auto-load sensing system to automatically measure the load size and adjust the water level



Name (Brand): Combination Oven/Stove (VULCAN)
Size: 36" W x 34" D x 58" H
Location: Kitchen
Quantity: 1
Details: 6 burner natural gas range with convection oven base; Stainless steel front, sides, back riser, and lift off high shelf; Heavy duty



Name (Brand): Exhaust Hood (EAGLE GROUP)
Size: 36" W x 36" D x 20" H
Location: Kitchen
Quantity: 1
Details: Heavy gauge type 304 stainless steel construction; NFPA-96 approved; Seams of canopy are continuously liquid tight



Name (Brand): Undercounter Refrigerator/Freezer (TRAULSEN)
Size: 24" W x 27" D x 33" H
Location: Kitchen
Quantity: 2
Details: Environmentally friendly; Complies with ADA; Zero clearance installation to save valuable floor space; Adaptable to any kitchen layout



Name (Brand): Stand-up Freezer (TRAULSEN)
Size: 24" W x 30" D x 84" H
Location: Storage
Quantity: 1
Details: Environmentally friendly; CFC-free; Microprocessor temp controls; Stainless steel front and door; Anodized aluminum sides and interior



Name (Brand): Undercounter Dishwasher (HOBART)
Size: 24" W x 27" D x 33" H
Location: Kitchen
Quantity: 1
Details: Energy star approved; Includes Sense-A-Temp boost heater technology; No chemical residue; .62 gallons of water per rack;



Name (Brand): Kitchen Sprayer (REGENCY)
Size: 44" Hose Length
Location: Kitchen
Quantity: 1
Details: 1.42 gallon per minute flow rate; Interchangeable with other brands; Flexible hose helps rinse across all sink compartments



Name (Brand): 3 Compartment Sink (REGENCY)
Size: 94" W x 30" D x 44" H
Location: Kitchen
Quantity: 1
Details: Backslash and rolled edges prevent splashes and overflow; Made of high-quality 16-gauge type 304 stainless steel; 2 drainboards



Name (Brand): Handwashing Sink (REGENCY)
Size: 17" W x 15" D
Location: Kitchen
Quantity: 1
Details: Made of 20-gauge type 304 stainless steel; 8" high backsplash; Durable construction; Includes mounting bracket



Name (Brand): Wall-mounted Hand Sink (KOHLER)
Size: 22" W x 18" D
Location: Bathroom/Laundry
Quantity: 2
Details: Meets ADA requirements; Vitreous china coating, Made of fireclay; Convenient overflow placement; Designed for small spaces



Name (Brand): Trough Sink (KOHLER)
Size: 36" W x 21" D x 6" H
Location: Bathroom
Quantity: 1
Details: Meets ADA requirements; Vitreous china coating; Above counter sink basin with contemporary design; Convenient overflow placement



Name (Brand): Bathroom Faucet (KOHLER)
Size: 6" H
Location: Bathroom, Laundry
Quantity: 3
Details: EPA WaterSense® approved; 1.2 gallon per minute maximum flow rate; Low-flow aerator available; KOHLER ceramic disc valves

FIXTURES



Name (Brand): Shower Head (KOHLER)
Size: 11" D x 24" H
Location: Bathroom
Quantity: 2
Details: Adjustable shower head delivers 2.5 gallons per minute spray; Solid brass construction for durability and reliability; Valvet® valves



Name (Brand): Shower Basin (KOHLER)
Size: 60" W x 32" D x 4" H
Location: Bathroom
Quantity: 2
Details: Safeguard® slip-resistant finish for added safety; Cast iron with Safeguard® finish; Left centered drain with removable drain cover



Name (Brand): Toilet (KOHLER)
Size: 10" W x 22" D x 17" H
Location: Bathroom
Quantity: 3
Details: Vitreous china coating; Equipped with Sloan FLUSHMATE®, Polished chrome trip lever; Elongated bowl



Name (Brand): Grab Bars (MOEN)
Size: *Varies by Code
Location: Bathroom
Quantity: *Multiple
Details: Securemount design for secure/lasting installation; Complies with ADA requirements; Stainless steel construction for added durability



Name (Brand): Can Light (FOCAL POINT)
Size: 6" W x 6" D
Location: Dining Hall
Quantity: 18
Details: Energy Star approved; Selection of dimming drivers available; Standard lumen outputs of 1000, 1500, 2000, 2500, or 3000



Name (Brand): Pendant Light (TECH LIGHTING)
Size: 9" H x 5" Diameter
Location: Dining Hall
Quantity: 5
Details: Fully dimmable incandescent lamping to create the desired ambiance; 6 feet of field-cutttable cord for optimal customization



Name (Brand): Track Light (WAC LIGHTING)
Size: 4" W x 3" D x 7" H
Location: Dining Hall
Quantity: 56
Details: Eco friendly; Energy efficient; Lower wattage with superior lumen output; Over 10x the rated life span

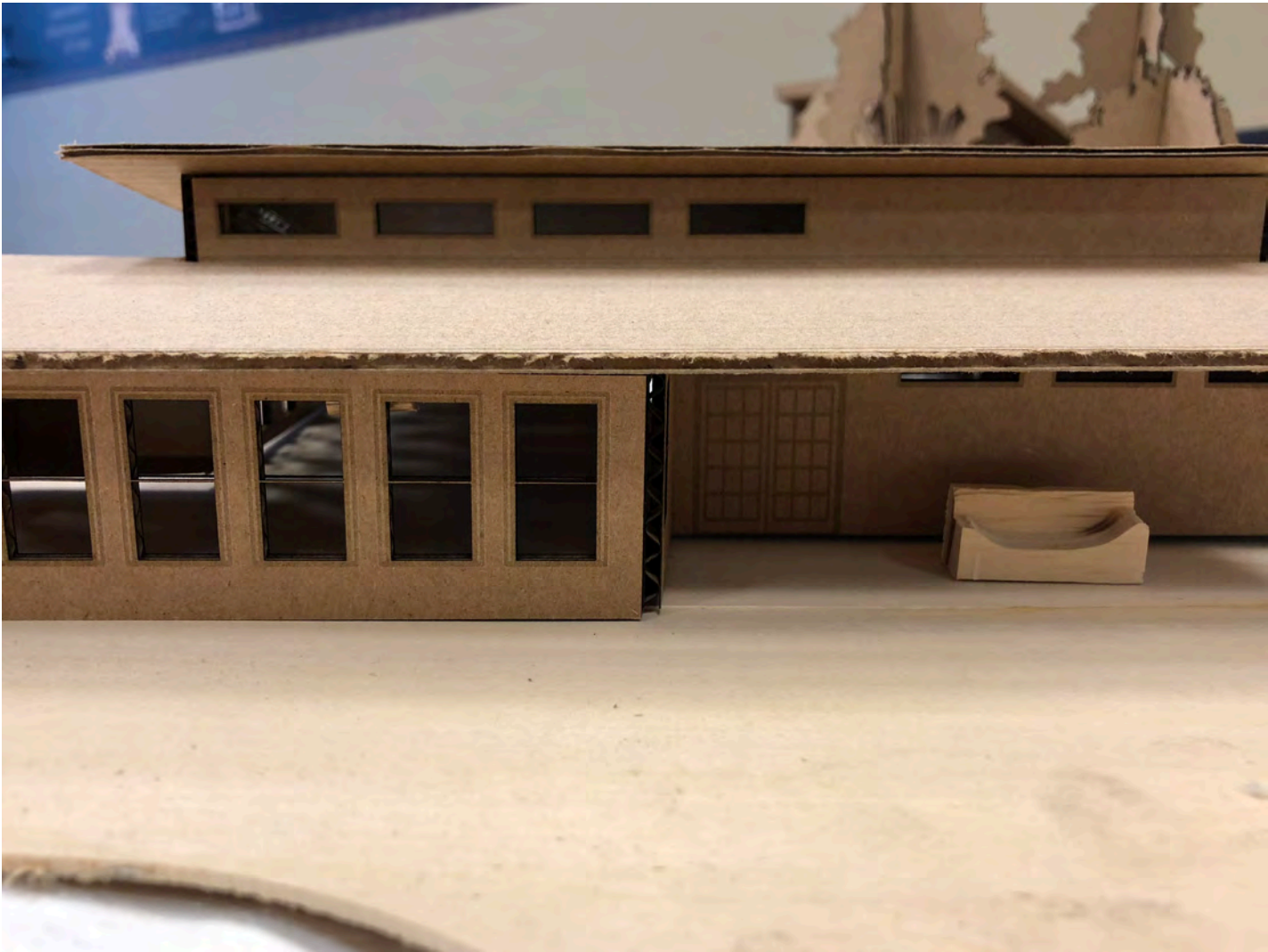


Name (Brand): Ceiling Fan (MINKA AIRE)
Size: 52" Blade Sweep
Location: Dining Hall
Quantity: 5
Details: Energy star approved; Plywood construction; Remote controlled; Oil rubbed bronze finish; Universal lighting kit adaptable

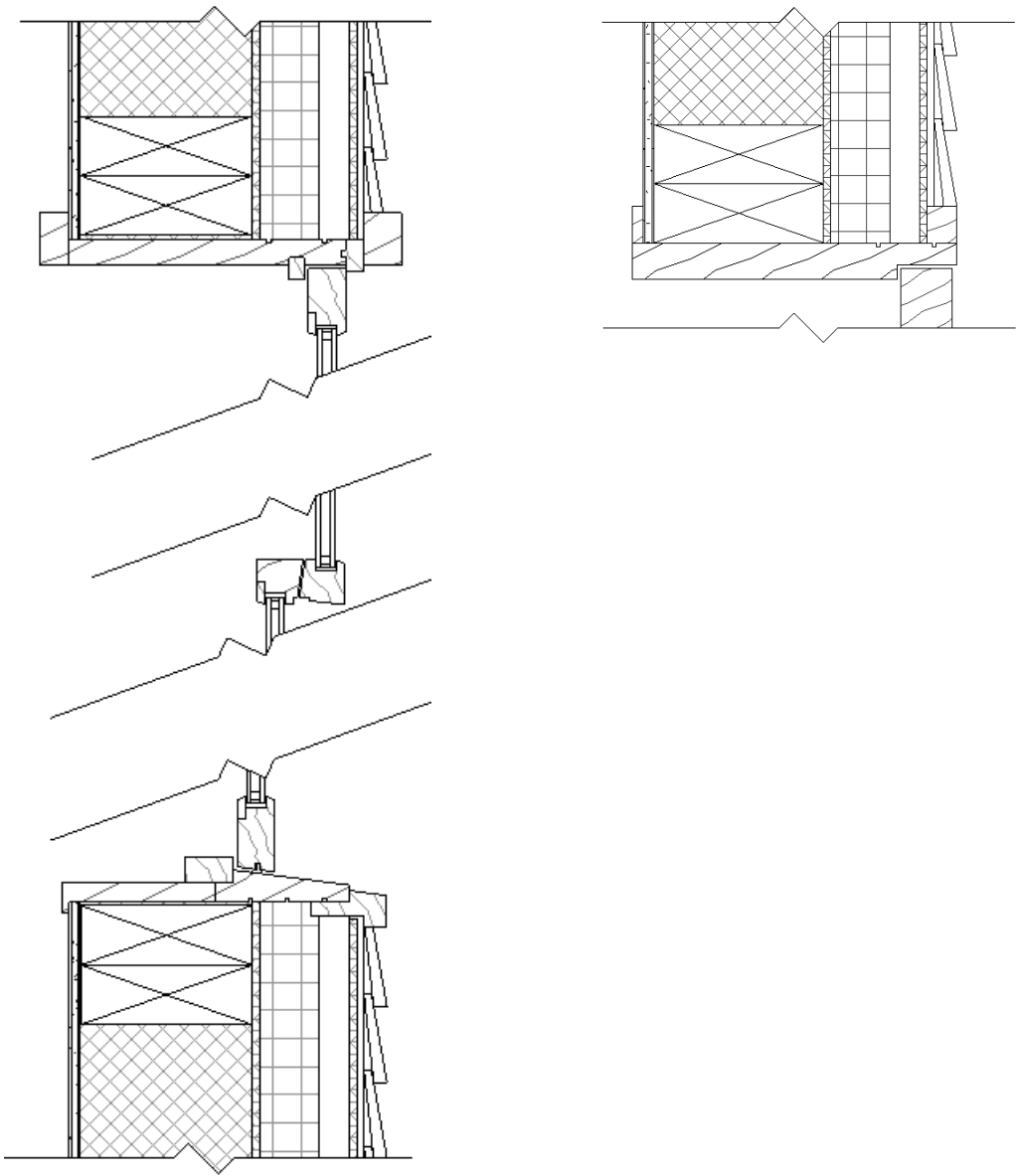
APPLIANCE/FIXTURE & MATERIAL MATRIX

Appliance/Fixture	Brand	Model #	Size ("W x "D x "H)	Quantity	Voltage	Location	Links	
Washer/Dryer								
Spacemaker Washer and Electric Dryer	GE	GUD27ESSJ/27GSSJ	27" W x 31" D x 76" H	2	120/240	Laundry	Website	Spec Sheet
Stove/Oven								
Endurance 6 Burner Natural Gas Range with Convection Oven Base	VULCAN	36C-6BN	36" W x 34" D x 58" H	1	120	Kitchen	Website	Spec Sheet
Exhaust Hood								
Spec Air Condensate Exhaust Hood	EAGLE GROUP	HDC3636	36" W x 36" D x 20" H	1		Kitchen	Website	Spec Sheet
Undercounter Dishwasher								
LXeR Advansys HOT	HOBART	LXeR - Energy Recovery	24" W x 27" D x 33" H	1	120/208	Kitchen	Website	Spec Sheet
Undercounter Refrigerator/Freezer								
Undercounter Refrigerator with Left and Right Hinged Doors	TRAULSEN	UHT48-LR	24" W x 27" D x 33" H	2	115	Kitchen	Website	Spec Sheet
Stand-up Freezer								
G Series One Section Solid Door Reach in Freezer with Left Hinged Door	TRAULSEN	G12011	24" W x 30" D x 84" H	1	115	Storage	Website	Spec Sheet
3 Compartment Sink								
16-Gauge SS 3 Compartment Sink with 2 Drainboards	REGENCY	600S31824218	94" W x 30" D x 44" H	1		Kitchen	Website	Spec Sheet
Handwashing Sink								
Wall Mounted Hand Sink with Gooseneck Faucet	REGENCY	600HS17	17" W x 15" D	1		Kitchen	Website	Spec Sheet
Kitchen Sprayer								
1.42 GPM Wall-Mounted Pre-Rinse Assembly w/ Faucet	REGENCY	600FPRSFA12K	Hose Length: 44"	1		Kitchen	Website	Spec Sheet
Bathroom Faucet								
Purist® Single-Handle Bathroom Sink Faucet w/ Straight Lever Handle	KOHLER	K-14402-4A	6" H	3		Bathroom, Laundry	Website	Spec Sheet
Trough Sink								
Vox® Rectangle Above-Counter Bathroom Sink	KOHLER	K-2749-1	36" W x 21" D x 6" H	1		Bathroom	Website	Spec Sheet
Wall-Mounted Sink								
Pinoir® Wall-mount Bathroom Sink	KOHLER	K-2035-1	22" W x 18" D	2		Bathroom, Laundry	Website	Spec Sheet
Toilet								
Highline® Pressure Lite® Toilet	KOHLER	K-3519	10" W x 22" D x 17" H	3		Bathroom	Website	Spec Sheet
Shower Basin								
Bellwether® Single-Threshold Shower Base w/ Left Center Drain	KOHLER	K-9163	60" W x 32" D x 4" H	2		Bathroom	Website	Spec Sheet
Shower Head								
Industrial Exposed Shower	KOHLER	K-7252	11" D x 24" H	2		Bathroom	Website	Spec Sheet
Grab Bars								
Moen Grab Bars	MOEN	*Various bars needed	*Varies by code	*Multiple		Bathroom	Website	Spec Sheet
Pendant Light								
Clark Pendant	TECH LIGHTING	600CLKP	9" H, Diameter: 5"	5	120	Kitchen	Website	Spec Sheet

Appliance/Fixture	Brand	Model #	Size ("W x "D x "H)	Quantity	Voltage	Location	Links	
Can Light								
ID+ LED Downlight	FOCAL POINT	FLC66D / LC66	6" W x 6" D	18	120	Dining Hall	Website	Spec Sheet
Track Light								
Summit AC LED Beamshift Line Voltage Cylinder Track Head	WAC LIGHTING	H/L/J-LED202	4" W x 3" D x 7" H	56	120	Dining Hall	Website	Spec Sheet
Ceiling Fan								
52" Minka Aire New Era	MINKA AIRE	F513-ORB	Blade Sweep: 52"	5		Dining Hall	Website	Spec Sheet
Expansion Tank for Well								
Well-X-Trol®	AMTROL	*Varies	*TBD by Craig Tarr	1		Mechanical	Website	Spec Sheet
Wall-Mounted Boiler								
UFT Boiler	HTP	*Varies	*TBD by Craig Tarr	1		Mechanical	Website	Spec Sheet
Storage Tank for Boiler								
SuperStor Ultra Stainless Steel Storage Tank	HTP	SSU-30CB	*TBD by Craig Tarr	1		Mechanical	Website	Spec Sheet
Water Softener								
31,100 Grain Water Softener & Filter In One	GE	GXMH31H	15" W x 23" D x 48" H	1	24	Mechanical	Website	Spec Sheet
Sump Basin in Kitchen								
Sump pump Energy Star w/Ultimate Switch	PRO SERIES PUMPS	S3033USC3	8" D x 14" H	1	115	Kitchen	Website	Spec Sheet
Wood Stove								
Kuuma Wood Stove	LAMMPA MANUFACTURING INC.	*Custom design	*TBD	1		Dining Hall	Website	Spec Sheet
Finishes	Brand	Color	Material	Location			Links	
Exterior								
Tile-Loc Panel	PAC CLAD PETERSON	Evergreen	Aluminum or Gauge Steel	Roof			Website	Spec Sheet
Shou-Sugi-Ban	Will's Lumber	Black/Charred	Pine	Exterior Cladding				
Quarried Stone	Will's Quarry	*Varies	Ely Greenstone	Exterior Cladding				
Raw Wood	Will's Lumber	Natural	Pine	Decking				
Dark Wood	Will's Lumber	Bitterwood Stain	Pine	Deck Path				
Dark Wood	Will's Lumber	Ebony Stain	Pine	Exterior Columns				
Interior								
Exposed Wood	Will's Lumber Yard	Dark Stain	Pine	Beams & Structure				
PREMIUM PLUS® Interior Semi-Gloss Enamel	BEHR	Ultra Pure White	Paint	Wall Paint			Website	
Polished Concrete	Summit Academy		Concrete	Flooring			Website	
Verde Environmental Wood Stain	PENOFIN	*Varies per application	Brazilian Rosewood Oil Base	Cabinet Stain			Website	Spec Sheet
Stainless Steel Countertop		Silver	Stainless Steel	Kitchen Countertop				
End-grain Butcher Block	Will's Vounteers		Maple	Island Butcher Block			Website (opt. company)	
Festiva	DALTILE	QF16 Driftwood	Glazed Wall Tile	Kitchen Backsplash			Website	
Base: Raw Wood / Uppers: Medium Wood	Will's Lumber	Natural/Cypress Stain	Pine	Kitchen Cabinets				
European Railing Bar Cabinet Pull	SIRO DESIGNS	Fine Brushed Nickel	Premium Steel	Cabinet Handles			Website	
Modern Dimensions™	DALTILE	0190 Arctic White™	Glazed Wall Tile	Bathroom Wall Tile			Website	

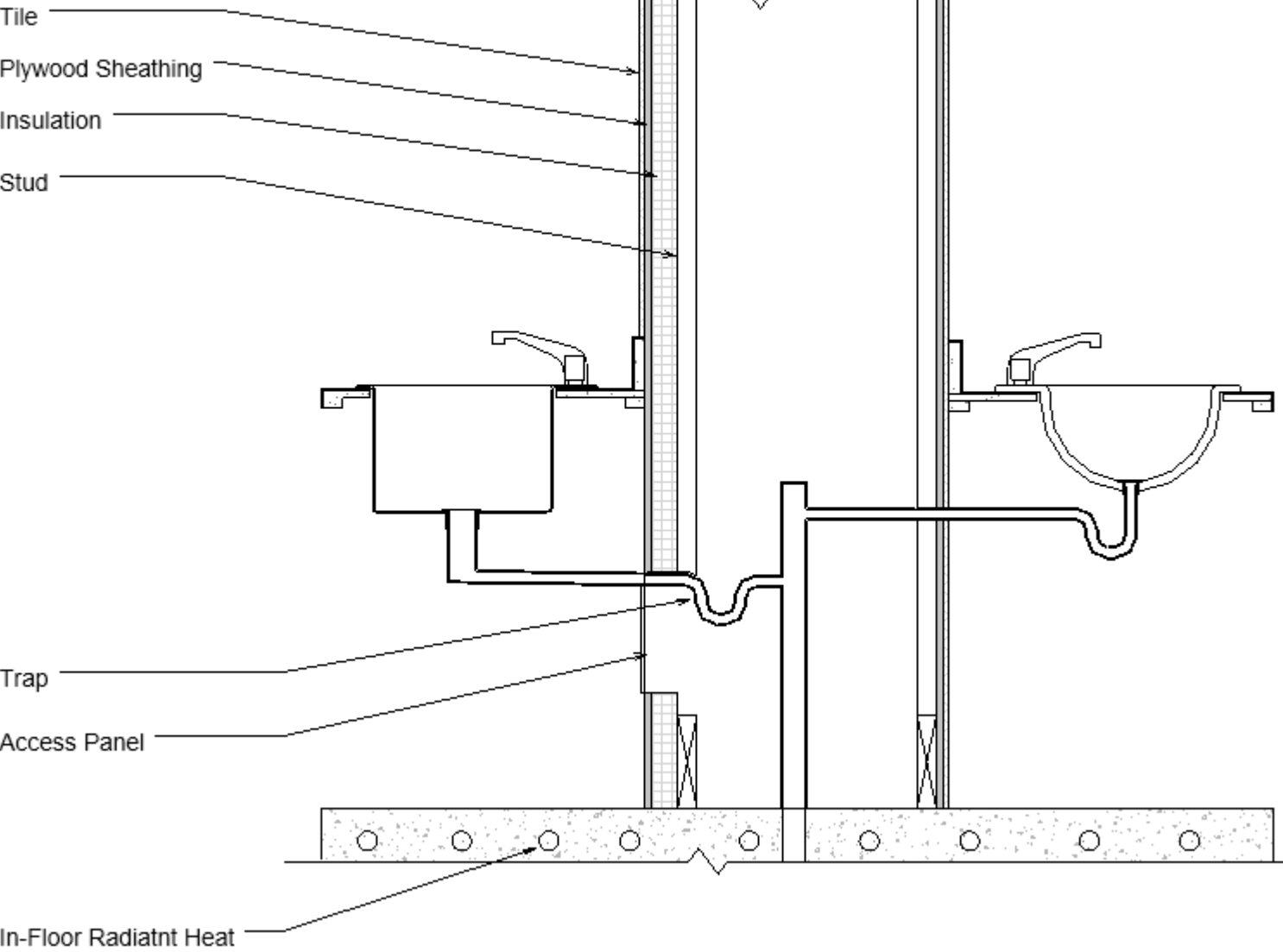






Kitchen: Zone 2

Laundry: Zone 1







DINING AREA





LIBRARY NOOK



